

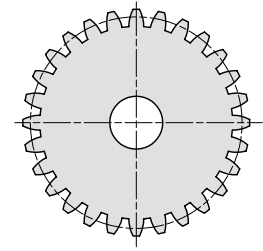
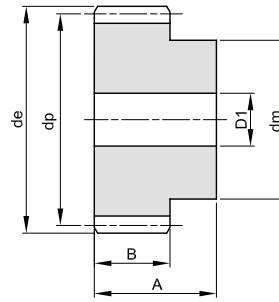
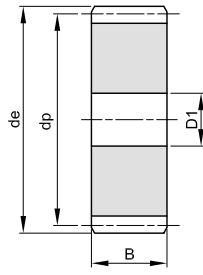


# RUOTE DENTATE CILINDRICHE CYLINDRICAL GEARS

**MODULO 1**

ANGOLO DI PRESSIONE **20°**

A	B
25	15



Materiale: Acciaio C45

Z	codice	de	dp	dm	D1	Kg.
12	401010012	14	12	9	-	0,01
13	401010013	15	13	10	-	0,02
14	401010014	16	14	11	-	0,02
15	401010015	17	15	12	-	0,02
16	401010016	18	16	13	-	0,03
17	401010017	19	17	14	-	0,03
18	401010018	20	18	15	8	0,03
19	401010019	21	19	15	8	0,04
20	401010020	22	20	16	8	0,04
21	401010021	23	21	16	8	0,05
22	401010022	24	22	16	8	0,05
23	401010023	25	23	18	8	0,06
24	401010024	26	24	20	10	0,06
25	401010025	27	25	20	10	0,07
26	401010026	28	26	20	10	0,07
27	401010027	29	27	20	10	0,08
28	401010028	30	28	20	10	0,08
29	401010029	31	29	20	10	0,09
30	401010030	32	30	20	10	0,09
31	401010031	33	31	25	10	0,11
32	401010032	34	32	25	10	0,12
33	401010033	35	33	25	10	0,12
34	401010034	36	34	25	10	0,13
35	401010035	37	35	25	10	0,14
36	401010036	38	36	25	10	0,14
37	401010037	39	37	25	10	0,15
38	401010038	40	38	25	10	0,16
39	401010039	41	39	25	10	0,16
40	401010040	42	40	25	10	0,17
41	401010041	43	41	30	10	0,19
42	401010042	44	42	30	10	0,20
43	401010043	45	43	30	10	0,21
44	401010044	46	44	30	10	0,22
45	401010045	47	45	30	10	0,23
46	401010046	48	46	30	10	0,23
47	401010047	49	47	30	10	0,24
48	401010048	50	48	30	10	0,25
49	401010049	51	49	30	10	0,26
50	401010050	52	50	30	12	0,26
51	401010051	53	51	40	12	0,32
52	401010052	54	52	40	12	0,33
53	401010053	55	53	40	12	0,33
54	401010054	56	54	40	12	0,34

Z	codice	de	dp	dm	D1	Kg.
55	401010055	57	55	40	12	0,36
56	401010056	58	56	40	12	0,37
57	401010057	59	57	40	12	0,38
58	401010058	60	58	40	12	0,39
59	401010059	61	59	40	12	0,40
60	401010060	62	60	40	12	0,41
61	401010061	63	61	50	12	0,47
62	401010062	64	62	50	12	0,49
63	401010063	65	63	50	12	0,50
64	401010064	66	64	50	12	0,51
65	401010065	67	65	50	12	0,52
66	401010066	68	66	50	12	0,53
67	401010067	69	67	50	12	0,55
68	401010068	70	68	50	12	0,56
69	401010069	71	69	50	12	0,57
70	401010070	72	70	50	12	0,58
72	411010072	74	72		12	0,46
75	411010075	77	75		12	0,51
76	411010076	78	76		12	0,52
80	411010080	82	80		12	0,58
85	411010085	87	85		12	0,65
90	411010090	92	90		12	0,73
95	411010095	97	95		12	0,82
100	411010100	102	100		12	0,91
110	411010110	112	110		12	1,10
114	411010114	116	114		12	1,19
120	411010120	122	120		12	1,32
127	411010127	129	127		12	1,47

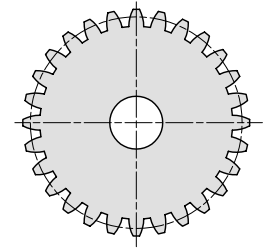
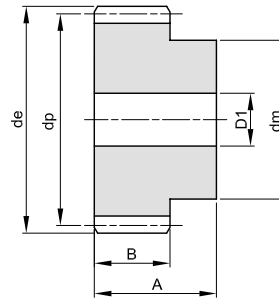
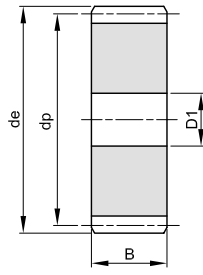


# RUOTE DENTATE CILINDRICHE CYLINDRICAL GEARS

**MODULO 1,5**

ANGOLO DI PRESSIONE 20°

A	B
30	17



Materiale: Acciaio C45

Z	codice	de	dp	dm	D1	Kg.
12	401015012	21,0	18,0	14	8	0,04
13	401015013	22,5	19,5	15	8	0,05
14	401015014	24,0	21,0	17	8	0,06
15	401015015	25,5	22,5	18	8	0,07
16	401015016	27,0	24,0	19	8	0,08
17	401015017	28,5	25,5	20	8	0,09
18	401015018	30,0	27,0	20	8	0,10
19	401015019	31,5	28,5	20	8	0,10
20	401015020	33,0	30,0	25	8	0,13
21	401015021	34,5	31,5	25	10	0,13
22	401015022	36,0	33,0	25	10	0,14
23	401015023	37,5	34,5	25	10	0,16
24	401015024	39,0	36,0	25	10	0,17
25	401015025	40,5	37,5	25	10	0,18
26	401015026	42,0	39,0	30	12	0,20
27	401015027	43,5	40,5	30	12	0,22
28	401015028	45,0	42,0	30	12	0,23
29	401015029	46,5	43,5	30	12	0,24
30	401015030	48,0	45,0	30	12	0,26
31	401015031	49,5	46,5	35	12	0,30
32	401015032	51,0	48,0	35	12	0,31
33	401015033	52,5	49,5	35	12	0,33
34	401015034	54,0	51,0	35	12	0,34
35	401015035	55,5	52,5	35	12	0,36
36	401015036	57,0	54,0	35	12	0,37
37	401015037	58,5	55,5	40	12	0,42
38	401015038	60,0	57,0	40	12	0,44
39	401015039	61,5	58,5	40	12	0,46
40	401015040	63,0	60,0	40	12	0,48
41	401015041	64,5	61,5	40	12	0,50
42	401015042	66,0	63,0	50	12	0,59
43	401015043	67,5	64,5	50	12	0,61
44	401015044	69,0	66,0	50	12	0,63
45	401015045	70,5	67,5	50	12	0,65
46	401015046	72,0	69,0	50	14	0,66
47	401015047	73,5	70,5	50	14	0,70
48	401015048	75,0	72,0	50	14	0,70
49	401015049	76,5	73,5	50	14	0,73
50	401015050	78,0	75,0	50	14	0,76
51	401015051	79,5	76,5	60	14	0,86
52	401015052	81,0	78,0	60	14	0,89
53	401015053	82,5	79,5	60	14	0,91
54	401015054	84,0	81,0	60	14	0,94

Z	codice	de	dp	dm	D1	Kg.
55	401015055	85,5	82,5	60	14	0,96
56	401015056	87,0	84,0	60	16	0,98
57	401015057	88,5	85,5	60	16	1,00
58	401015058	90,0	87,0	60	16	1,03
59	401015059	91,5	88,5	60	16	1,05
60	401015060	93,0	90,0	60	16	1,09
61	401015061	94,5	91,5	70	16	1,22
62	401015062	96,0	93,0	70	16	1,25
63	401015063	97,5	94,5	70	16	1,28
64	401015064	99,0	96,0	70	16	1,31
65	401015065	100,5	97,5	70	16	1,34
66	401015066	102,0	99,0	70	16	1,37
67	401015067	103,5	100,5	70	16	1,40
68	401015068	105,0	102,0	70	16	1,43
69	401015069	106,5	103,5	70	16	1,46
70	401015070	108,0	105,0	70	16	1,50
72	411015072	111,0	108,0		16	1,19
75	411015075	115,5	112,5		16	1,30
76	411015076	117,0	114,0		16	1,33
80	411015080	123,0	120,0		16	1,48
85	411015085	130,5	127,5		16	1,67
90	411015090	138,0	135,0		16	1,88
95	411015095	145,5	142,5		16	2,09
100	411015100	153,0	150,0		16	2,32
110	411015110	168,0	165,0		16	2,82
114	411015114	174,0	171,0		16	3,03
120	411015120	183,0	180,0		16	3,36
127	411015127	193,5	190,5		16	3,77

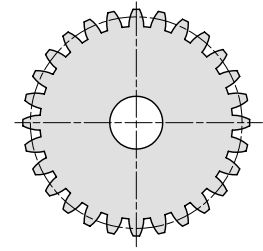
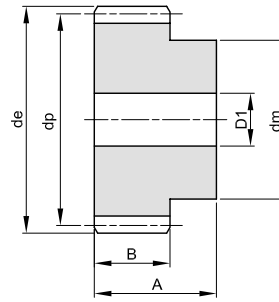
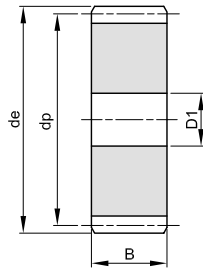


# RUOTE DENTATE CILINDRICHE CYLINDRICAL GEARS

## MODULO 2

ANGOLO DI PRESSIONE 20°

A	B
35	20



Materiale: Acciaio C45

Z	codice	de	dp	dm	D1	Kg.
12	401020012	28	24	18	10	0,08
13	401020013	30	26	20	10	0,10
14	401020014	32	28	22	10	0,12
15	401020015	34	30	24	10	0,14
16	401020016	36	32	25	10	0,16
17	401020017	38	34	25	10	0,18
18	401020018	40	36	25	10	0,19
19	401020019	42	38	25	10	0,21
20	401020020	44	40	30	10	0,26
21	401020021	46	42	30	12	0,27
22	401020022	48	44	30	12	0,29
23	401020023	50	46	30	12	0,31
24	401020024	52	48	35	12	0,36
25	401020025	54	50	35	12	0,39
26	401020026	56	52	40	12	0,45
27	401020027	58	54	40	12	0,47
28	401020028	60	56	40	12	0,50
29	401020029	62	58	40	14	0,52
30	401020030	64	60	40	14	0,55
31	401020031	66	62	45	14	0,61
32	401020032	68	64	45	14	0,65
33	401020033	70	66	45	14	0,68
34	401020034	72	68	45	14	0,71
35	401020035	74	70	45	14	0,74
36	401020036	76	72	45	14	0,78
37	401020037	78	74	50	14	0,86
38	401020038	80	76	50	14	0,90
39	401020039	82	78	50	14	0,93
40	401020040	84	80	50	14	0,97
41	401020041	86	82	55	16	1,05
42	401020042	88	84	55	16	1,09
43	401020043	90	86	55	16	1,13
44	401020044	92	88	60	16	1,23
45	401020045	94	90	60	16	1,27
46	401020046	96	92	60	16	1,31
47	401020047	98	94	70	16	1,48
48	401020048	100	96	70	16	1,53
49	401020049	102	98	70	16	1,57
50	401020050	104	100	70	16	1,62
51	401020051	106	102	70	16	1,67
52	401020052	108	104	70	16	1,72
53	401020053	110	106	70	16	1,78
54	401020054	112	108	70	16	1,83

Z	codice	de	dp	dm	D1	Kg.
55	401020055	114	110	70	16	1,88
56	401020056	116	112	70	16	1,94
57	401020057	118	114	70	16	1,99
58	401020058	120	116	70	16	2,05
59	401020059	122	118	70	16	2,11
60	401020060	124	120	70	16	2,16
61	401020061	126	122	80	16	2,36
62	401020062	128	124	80	16	2,42
63	401020063	130	126	80	16	2,48
64	401020064	132	128	80	16	2,55
65	401020065	134	130	80	16	2,61
66	401020066	136	132	80	16	2,67
67	401020067	138	134	80	16	2,74
68	401020068	140	136	80	16	2,81
69	401020069	142	138	80	16	2,87
70	401020070	144	140	80	16	2,94
72	411020072	148	144		16	2,50
75	411020075	154	150		20	2,71
76	411020076	156	152		20	2,79
80	411020080	164	160		20	3,09
85	411020085	174	170		20	3,50
90	411020090	184	180		20	3,93
95	411020095	194	190		20	4,39
100	411020100	204	200		20	4,87
110	411020110	224	220		20	5,90
114	411020114	232	228		20	6,34
120	411020120	244	240		20	7,03
127	411020127	258	254		20	7,89

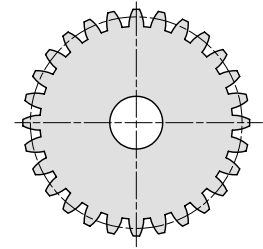
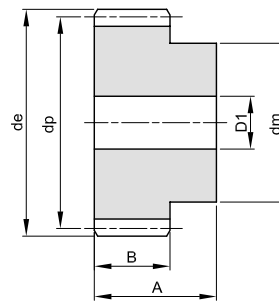
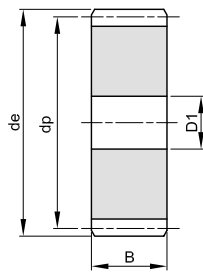


# RUOTE DENTATE CILINDRICHE CYLINDRICAL GEARS

**MODULO 2,5**

ANGOLO DI PRESSIONE 20°

A	B
45	25



Materiale: Acciaio C45

Z	codice	de	dp	dm	D1	Kg.
12	401025012	35,0	30,0	22	10	0,17
13	401025013	37,5	32,5	25	10	0,21
14	401025014	40,0	35,0	28	10	0,25
15	401025015	42,5	37,5	30	10	0,30
16	401025016	45,0	40,0	32	12	0,33
17	401025017	47,5	42,5	35	12	0,38
18	401025018	50,0	45,0	35	12	0,42
19	401025019	52,5	47,5	35	12	0,45
20	401025020	55,0	50,0	40	12	0,54
21	401025021	57,5	52,5	40	14	0,56
22	401025022	60,0	55,0	45	14	0,66
23	401025023	62,5	57,5	45	14	0,70
24	401025024	65,0	60,0	45	14	0,74
25	401025025	67,5	62,5	50	14	0,85
26	401025026	70,0	65,0	50	14	0,90
27	401025027	72,5	67,5	50	14	0,95
28	401025028	75,0	70,0	50	14	1,00
29	401025029	77,5	72,5	50	14	1,06
30	401025030	80,0	75,0	55	14	1,18
31	401025031	82,5	77,5	55	16	1,22
32	401025032	85,0	80,0	55	16	1,28
33	401025033	87,5	82,5	55	16	1,34
34	401025034	90,0	85,0	55	16	1,41
35	401025035	92,5	87,5	60	16	1,54
36	401025036	95,0	90,0	60	16	1,61
37	401025037	97,5	92,5	60	16	1,68
38	401025038	100,0	95,0	60	16	1,75
39	401025039	102,5	97,5	60	16	1,83
40	401025040	105,0	100,0	70	16	2,06
41	401025041	107,5	102,5	70	16	2,14
42	401025042	110,0	105,0	70	16	2,22
43	401025043	112,5	107,5	70	16	2,30
44	401025044	115,0	110,0	70	16	2,38
45	401025045	117,5	112,5	70	16	2,47
46	401025046	120,0	115,0	70	20	2,52
47	401025047	122,5	117,5	80	20	2,80
48	401025048	125,0	120,0	80	20	2,88
49	401025049	127,5	122,5	80	20	2,98
50	401025050	130,0	125,0	80	20	3,07
51	401025051	132,5	127,5	80	20	3,17
52	401025052	135,0	130,0	90	20	3,48
53	401025053	137,5	132,5	90	20	3,58
54	401025054	140,0	135,0	90	20	3,68

Z	codice	de	dp	dm	D1	Kg.
55	401025055	142,5	137,5	90	20	3,78
56	401025056	145,0	140,0	100	20	4,13
57	401025057	147,5	142,5	100	20	4,23
58	401025058	150,0	145,0	100	20	4,34
59	401025059	152,5	147,5	100	20	4,46
60	401025060	155,0	150,0	100	20	4,57
65	411025065	167,5	162,5		20	3,99
70	411025070	180,0	175,0		20	4,64
72	411025072	185,0	180,0		20	4,91
75	411025075	192,5	187,5		20	5,33
76	411025076	195,0	190,0		20	5,48
80	411025080	205,0	200,0		25	6,04
85	411025085	217,5	212,5		25	6,84
90	411025090	230,0	225,0		25	7,68
95	411025095	242,5	237,5		25	8,57
100	411025100	255,0	250,0		25	9,51
110	411025110	280,0	275,0		25	11,53
114	411025114	290,0	285,0		25	12,39
120	411025120	305,0	300,0		25	13,74
127	411025127	322,5	317,5		25	15,40

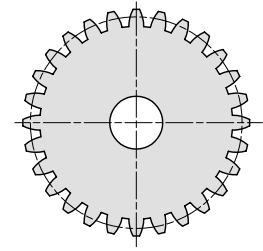
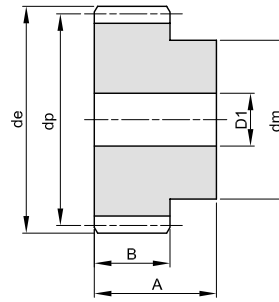
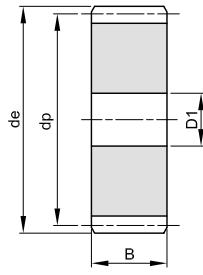


# RUOTE DENTATE CILINDRICHE CYLINDRICAL GEARS

**MODULO 3**

ANGOLO DI PRESSIONE **20°**

A	B
50	30



Materiale: Acciaio C45

Z	codice	de	dp	dm	D1	Kg.
12	401030012	42	36	27	12	0,28
13	401030013	45	39	30	12	0,34
14	401030014	48	42	33	12	0,41
15	401030015	51	45	35	12	0,47
16	401030016	54	48	38	14	0,54
17	401030017	57	51	42	14	0,63
18	401030018	60	54	45	14	0,72
19	401030019	63	57	45	14	0,78
20	401030020	66	60	45	14	0,84
21	401030021	69	63	45	16	0,89
22	401030022	72	66	50	16	1,02
23	401030023	75	69	50	16	1,10
24	401030024	78	72	50	16	1,18
25	401030025	81	75	60	16	1,39
26	401030026	84	78	60	16	1,48
27	401030027	87	81	60	16	1,56
28	401030028	90	84	60	16	1,66
29	401030029	93	87	60	16	1,75
30	401030030	96	90	60	16	1,85
31	401030031	99	93	60	16	1,95
32	401030032	102	96	70	16	2,21
33	401030033	105	99	70	16	2,32
34	401030034	108	102	70	16	2,43
35	401030035	111	105	70	16	2,55
36	401030036	114	108	70	20	2,62
37	401030037	117	111	70	20	2,74
38	401030038	120	114	80	20	3,05
39	401030039	123	117	80	20	3,18
40	401030040	126	120	80	20	3,31
41	401030041	129	123	80	20	3,44
42	401030042	132	126	80	20	3,58
43	401030043	135	129	80	20	3,72
44	401030044	138	132	90	20	4,07
45	401030045	141	135	90	20	4,22
46	401030046	144	138	90	20	4,37
47	401030047	147	141	100	20	4,76
48	401030048	150	144	100	20	4,92
50	411030050	156	150		20	4,06
52	411030052	162	156		20	4,40
55	411030055	171	165		20	4,93
57	411030057	177	171		20	5,30
60	411030060	186	180		20	5,89
65	411030065	201	195		20	6,92

Z	codice	de	dp	dm	D1	Kg.
70	411030070	216	210		25	8,00
72	411030072	222	216		25	8,47
75	411030075	231	225		25	9,21
76	411030076	234	228		25	9,46
80	411030080	246	240		25	10,49
85	411030085	261	255		25	11,86
90	411030090	276	270		25	13,32
95	411030095	291	285		25	14,86
100	411030100	306	300		25	16,48
110	411030110	336	320		25	19,97
114	411030114	348	342		30	21,40
120	411030120	366	360		30	23,74
127	411030127	387	381		30	26,61

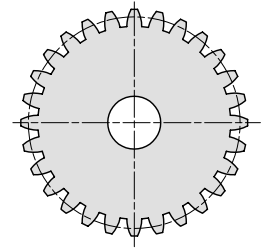
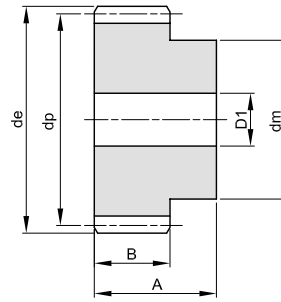
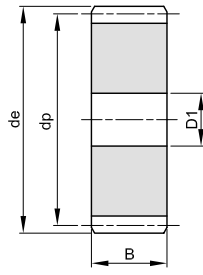


# RUOTE DENTATE CILINDRICHE CYLINDRICAL GEARS

**MODULO 4**

ANGOLO DI PRESSIONE **20°**

A	B
60	40



Materiale: Acciaio C45

Z	codice	de	dp	dm	D1	Kg.
12	401040012	56	48	35	14	0,63
13	401040013	60	52	40	14	0,78
14	401040014	64	56	45	14	0,93
15	401040015	68	60	45	14	1,05
16	401040016	72	64	50	16	1,20
17	401040017	76	68	50	16	1,33
18	401040018	80	72	50	16	1,47
19	401040019	84	76	60	16	1,75
20	401040020	88	80	60	16	1,90
21	401040021	92	84	70	16	2,22
22	401040022	96	88	70	16	2,39
23	401040023	100	92	75	20	2,60
24	401040024	104	96	75	20	2,79
25	401040025	108	100	75	20	2,98
26	401040026	112	104	75	20	3,18
27	401040027	116	108	75	20	3,39
28	401040028	120	112	75	20	3,60
29	401040029	124	116	75	20	3,83
30	401040030	128	120	75	20	4,06
31	401040031	132	124	80	20	4,39
32	401040032	136	128	80	20	4,64
33	401040033	140	132	80	20	4,90
34	401040034	144	136	80	20	5,16
35	401040035	148	140	80	20	5,43
36	401040036	152	144	80	25	5,63
38	411040038	160	152		25	5,20
40	411040040	168	160		25	6,11
45	411040045	188	180		25	7,78
48	411040048	200	192		25	8,87
50	411040050	208	200		25	9,65
52	411040052	216	208		25	10,45
55	411040055	228	220		25	11,71
57	411040057	236	228		25	12,59
60	411040060	248	240		25	13,97
65	411040065	268	260		25	16,43
70	411040070	288	280		25	19,09
75	411040075	308	300		25	21,94
76	411040076	312	304		30	22,47
80	411040080	328	320		30	24,93
85	411040085	348	340		30	28,18
90	411040090	368	360		30	31,62
95	411040095	388	380		30	35,26
100	411040100	408	400		30	39,11

Z	codice	de	dp	dm	D1	Kg.
110	411040110	448	440		30	47,38
114	411040114	464	456		30	50,91

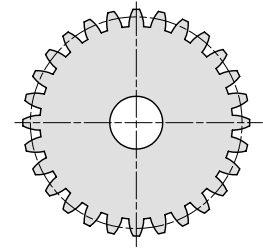
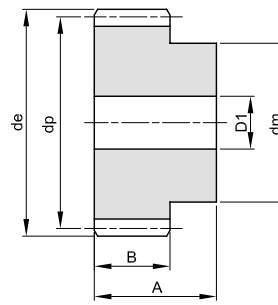
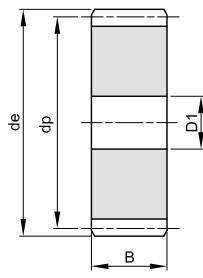


# RUOTE DENTATE CILINDRICHE CYLINDRICAL GEARS

## MODULO 5

ANGOLO DI PRESSIONE 20°

A	B
75	50



Materiale: Acciaio C45

Z	codice	de	dp	dm	D1	Kg.
12	401050012	70	60	45	20	1,21
13	401050013	75	65	50	20	1,47
14	401050014	80	70	55	20	1,76
15	401050015	85	75	60	20	2,07
16	401050016	90	80	65	20	2,40
17	401050017	95	85	70	20	2,75
18	401050018	100	90	70	20	3,02
19	401050019	105	95	70	20	3,30
20	401050020	110	100	80	20	3,83
21	401050021	115	105	80	20	4,15
22	401050022	120	110	80	20	4,48
23	401050023	125	115	90	20	5,08
24	401050024	130	120	90	20	5,44
25	401050025	135	125	90	20	5,82
26	401050026	140	130	100	20	6,50
27	401050027	145	135	100	20	6,91
28	401050028	150	140	100	25	7,22
29	401050029	155	145	110	25	7,98
30	401050030	160	150	110	25	8,44
32	411050032	170	160		25	7,62
35	411050035	185	175		25	9,16
38	411050038	200	190		25	10,84
40	411050040	210	200		25	12,04
45	411050045	235	225		25	15,30
48	411050048	250	240		25	17,44
50	411050050	260	250		30	18,69
52	411050052	270	260		30	20,43
55	411050055	285	275		30	22,89
57	411050057	295	285		30	24,62
60	411050060	310	300		30	27,31
65	411050065	335	325		30	32,12
70	411050070	360	350		30	37,31
75	411050075	385	375		30	42,88
76	411050076	390	380		30	44,04
80	411050080	410	400		30	48,84
85	411050085	435	425		30	55,19
90	411050090	460	450		30	61,92
95	411050095	485	475		30	69,03
100	411050100	510	500		30	76,53
110	411050110	560	550		30	92,69
114	411050114	580	570		30	99,59

Z	codice	de	dp	dm	D1	Kg.



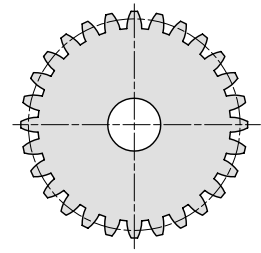
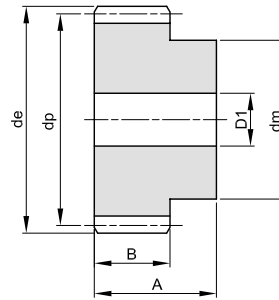
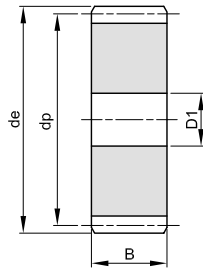


# RUOTE DENTATE CILINDRICHE CYLINDRICAL GEARS

## MODULO 6

ANGOLO DI PRESSIONE 20°

A	B
80	60



Materiale: Acciaio C45

Z	codice	de	dp	dm	D1	Kg.
12	401060012	84	72	54	20	1,98
13	401060013	90	78	60	20	2,38
15	401060015	102	90	70	20	3,29
16	401060016	108	96	75	20	3,80
18	401060018	120	108	80	20	4,76
20	401060020	132	120	90	20	5,99
24	401060024	156	144	110	25	8,70
25	401060025	162	150	110	25	9,33
28	411060028	180	168		25	10,00
30	411060030	192	180		25	11,55
32	411060032	204	192		25	13,22
35	411060035	222	210		25	15,79
38	411060038	240	228		25	18,74
40	411060040	252	240		25	20,75

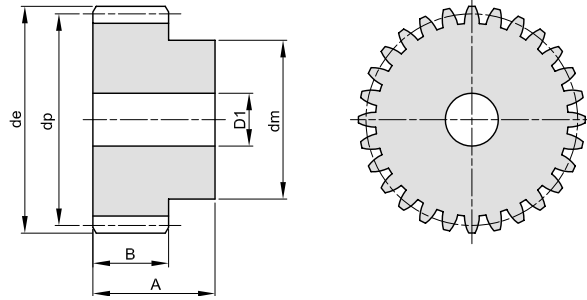
Z	codice	de	dp	dm	D1	Kg.
---	--------	----	----	----	----	-----



# RUOTE DENTATE CILINDRICHE CYLINDRICAL GEARS

**MODULO 8**

ANGOLO DI PRESSIONE **20°**



A	B
110	80

Materiale: Acciaio C45

Z	codice	de	dp	dm	D1	Kg.
15	401080015	136	120	90	25	7,96
18	401080018	160	144	100	25	11,34
20	401080020	176	160	120	30	14,38
24	401080024	208	192	150	30	21,25
25	401080025	216	200	150	30	22,85
30	401080030	256	240	190	30	33,50

Z	codice	de	dp	dm	D1	Kg.
---	--------	----	----	----	----	-----

--	--	--	--	--	--	--

--	--	--	--	--	--	--

--	--	--	--	--	--	--

--	--	--	--	--	--	--

--	--	--	--	--	--	--

--	--	--	--	--	--	--

--	--	--	--	--	--	--

--	--	--	--	--	--	--

--	--	--	--	--	--	--

--	--	--	--	--	--	--

--	--	--	--	--	--	--

--	--	--	--	--	--	--

--	--	--	--	--	--	--

--	--	--	--	--	--	--

--	--	--	--	--	--	--

--	--	--	--	--	--	--

--	--	--	--	--	--	--

--	--	--	--	--	--	--

--	--	--	--	--	--	--

--	--	--	--	--	--	--

--	--	--	--	--	--	--

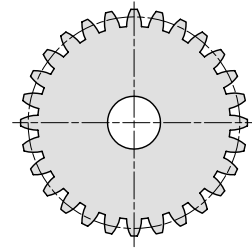
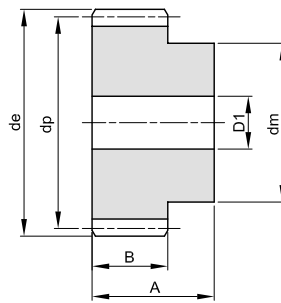
--	--	--	--	--	--	--



## RUOTE DENTATE CILINDRICHE TEMPERATE AD INDUZIONE CYLINDRICAL GEARS WITH HARDENED TEETH

**MODULO 2**

ANGOLO DI PRESSIONE 20°



A	B
35	20

Materiale: Acciaio C45

Z	codice	de	dp	dm	D1	Kg.
12	402020012	28	24	18	10	0,08
15	402020015	34	30	24	10	0,14
18	402020018	40	36	25	10	0,19
20	402020020	44	40	30	10	0,26
24	402020024	52	48	35	12	0,36
25	402020025	54	50	35	12	0,39
30	402020030	64	60	40	14	0,55
36	402020036	76	72	45	14	0,78
40	402020040	84	80	50	14	0,97
50	402020050	104	100	70	16	1,62
60	402020060	124	120	70	16	2,16

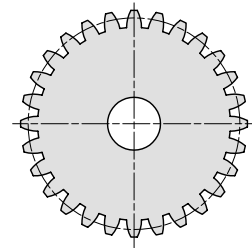
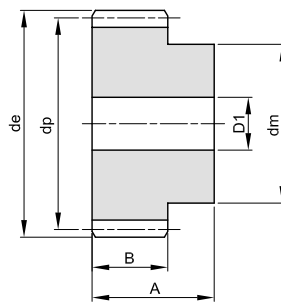
Z	codice	de	dp	dm	D1	Kg.



## RUOTE DENTATE CILINDRICHE TEMPERATE AD INDUZIONE CYLINDRICAL GEARS WITH HARDENED TEETH

**MODULO 2,5**

ANGOLO DI PRESSIONE 20°



A	B
45	25

Materiale: Acciaio C45

Z	codice	de	dp	dm	D1	Kg.
12	402025012	35	30	22	10	0,17
15	402025015	42,5	37,5	30	10	0,30
18	402025018	50	45	35	12	0,42
20	402025020	55	50	40	12	0,54
24	402025024	65	60	45	14	0,74
25	402025025	67,5	62,5	50	14	0,85
30	402025030	80	75	55	14	1,18
36	402025036	95	90	60	16	1,61
40	402025040	105	100	70	16	2,06
50	402025050	130	125	80	20	3,07
60	402025060	155	150	100	20	4,57

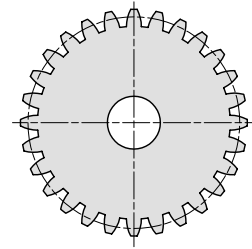
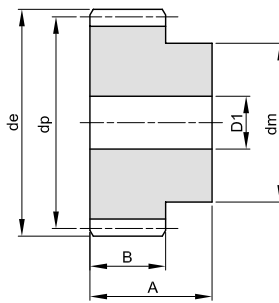
Z	codice	de	dp	dm	D1	Kg.



## RUOTE DENTATE CILINDRICHE TEMPERATE AD INDUZIONE CYLINDRICAL GEARS WITH HARDENED TEETH

### MODULO 3

ANGOLO DI PRESSIONE 20°



A	B
50	30

Materiale: Acciaio C45

Z	codice	de	dp	dm	D1	Kg.
12	402030012	42	36	27	12	0,28
15	402030015	51	45	35	12	0,47
18	402030018	60	54	45	14	0,72
20	402030020	66	60	45	14	0,84
24	402030024	78	72	50	16	1,18
25	402030025	81	75	60	16	1,39
30	402030030	96	90	60	16	1,85
36	402030036	114	108	70	20	2,62
40	402030040	126	120	80	20	3,31

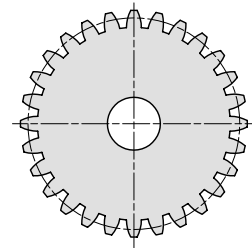
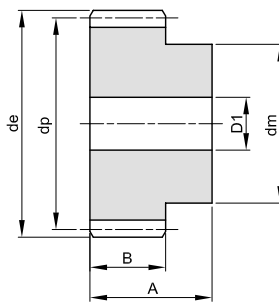
Z	codice	de	dp	dm	D1	Kg.



## RUOTE DENTATE CILINDRICHE TEMPERATE AD INDUZIONE CYLINDRICAL GEARS WITH HARDENED TEETH

### MODULO 4

ANGOLO DI PRESSIONE 20°



A	B
60	40

Materiale: Acciaio C45

Z	codice	de	dp	dm	D1	Kg.
12	402040012	56	48	35	14	0,63
15	402040015	68	60	45	14	1,05
18	402040018	80	72	50	16	1,47
20	402040020	88	80	60	16	1,90
24	402040024	104	96	75	20	2,79
25	402040025	108	100	75	20	2,98
30	402040030	128	120	75	20	4,06
36	402040036	152	144	80	25	5,63

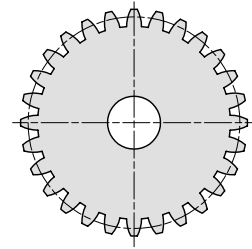
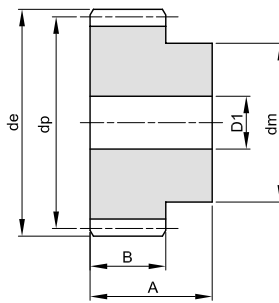
Z	codice	de	dp	dm	D1	Kg.



## RUOTE DENTATE CILINDRICHE TEMPERATE AD INDUZIONE CYLINDRICAL GEARS WITH HARDENED TEETH

**MODULO 5**

ANGOLO DI PRESSIONE **20°**



A	B
75	50

Materiale: Acciaio C45

Z	codice	de	dp	dm	D1	Kg.
12	402050012	70	60	45	20	1,21
15	402050015	85	75	60	20	2,07
18	402050018	100	90	70	20	3,02
20	402050020	110	100	80	20	3,83
24	402050024	130	120	90	20	5,44
25	402050025	135	125	90	20	5,82
30	402050030	160	150	110	25	8,44

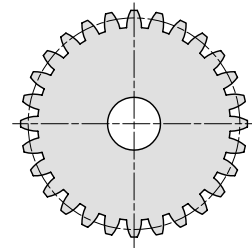
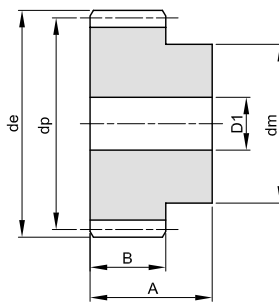
Z	codice	de	dp	dm	D1	Kg.



## RUOTE DENTATE CILINDRICHE TEMPERATE AD INDUZIONE CYLINDRICAL GEARS WITH HARDENED TEETH

**MODULO 6**

ANGOLO DI PRESSIONE **20°**



A	B
80	60

Materiale: Acciaio C45

Z	codice	de	dp	dm	D1	Kg.
12	402060012	84	72	54	20	1,98
15	402060015	102	90	70	20	3,29
16	402060016	108	96	75	20	3,80
18	402060018	120	108	80	20	4,76
20	402060020	132	120	90	20	5,99
24	402060024	156	144	110	25	8,70
25	402060025	162	150	110	25	9,33

Z	codice	de	dp	dm	D1	Kg.

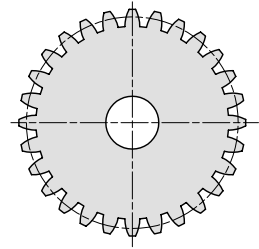
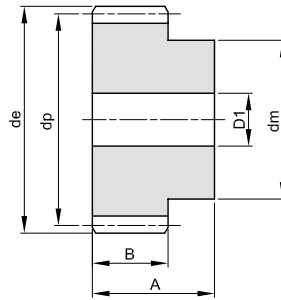
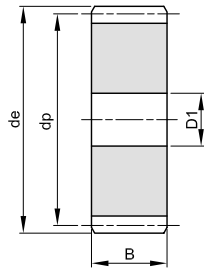


## RUOTE DENTATE CILINDRICHE IN ACCIAIO INOX CYLINDRICAL GEARS IN STAINLESS STEEL

### MODULO 1

ANGOLO DI PRESSIONE 20°

A	B
25	15



Materiale: INOX AISI 304 L

Z	codice	de	dp	dm	D1	Kg.
12	403010012	14	12	9		0,01
13	403010013	15	13	10		0,02
14	403010014	16	14	11		0,02
15	403010015	17	15	12		0,02
16	403010016	18	16	13		0,03
18	403010018	20	18	15	8	0,03
20	403010020	22	20	16	8	0,04
24	403010024	26	24	20	10	0,06
25	403010025	27	25	20	10	0,07
30	403010030	32	30	20	10	0,09
35	403010035	37	35	25	10	0,14
40	403010040	42	40	25	10	0,17

Z	codice	de	dp	dm	D1	Kg.
50	403010050	52	50	30	12	0,26
60	403010060	62	60	40	12	0,41
70	403010070	72	70	50	12	0,58
80	403010080	82	80		12	0,58
90	403010090	92	90		12	0,73
100	403010100	102	100		12	0,91
110	403010110	112	110		12	1,10
120	403010120	122	120		12	1,32

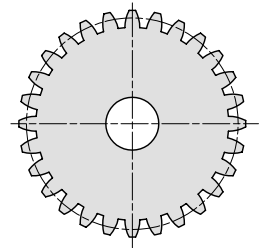
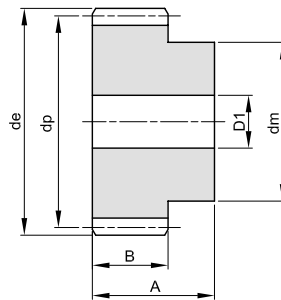
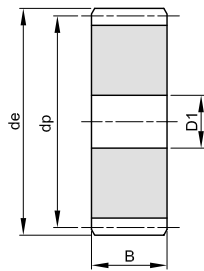


## RUOTE DENTATE CILINDRICHE IN ACCIAIO INOX CYLINDRICAL GEARS IN STAINLESS STEEL

### MODULO 1,5

ANGOLO DI PRESSIONE 20°

A	B
30	17



Materiale: INOX AISI 304 L

Z	codice	de	dp	dm	D1	Kg.
12	403015012	21,0	18,0	14	8	0,04
13	403015013	22,5	19,5	15	8	0,05
14	403015014	24,0	21,0	17	8	0,06
15	403015015	25,5	22,5	18	8	0,07
18	403015018	30,0	27,0	20	8	0,10
20	403015020	33,0	30,0	25	8	0,13
24	403015024	39,0	36,0	25	10	0,17
25	403015025	40,5	37,5	25	10	0,18
30	403015030	48,0	45,0	30	12	0,26
40	403015040	63,0	60,0	40	12	0,48
50	403015050	78,0	75,0	50	14	0,76
60	403015060	93,0	90,0	60	16	1,09

Z	codice	de	dp	dm	D1	Kg.
70	403015070	108,0	105,0	70	16	1,50
80	403015080	123,0	120,0		16	1,48
120	403015120	183,0	180,0		16	3,36

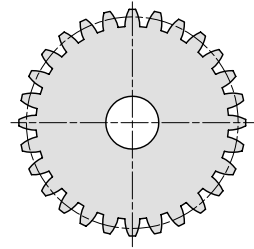
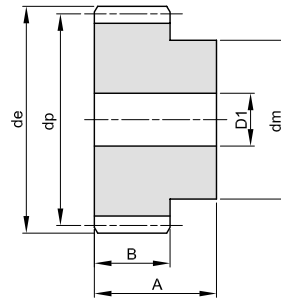
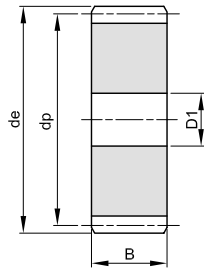


## RUOTE DENTATE CILINDRICHE IN ACCIAIO INOX CYLINDRICAL GEARS IN STAINLESS STEEL

**MODULO 2**

ANGOLO DI PRESSIONE **20°**

A	B
35	20



Materiale: INOX AISI 304 L

Z	codice	de	dp	dm	D1	Kg.
12	403020012	28	24	18	10	0,08
13	403020013	30	26	20	10	0,10
14	403020014	32	28	22	10	0,12
15	403020015	34	30	24	10	0,14
20	403020020	44	40	30	10	0,26
24	403020024	52	48	35	12	0,36
25	403020025	54	50	35	12	0,39
30	403020030	64	60	40	14	0,55
40	403020040	84	80	50	14	0,97
50	403020050	104	100	70	16	1,62
60	403020060	124	120	70	16	2,16
80	403020080	164	160		20	3,09

Z	codice	de	dp	dm	D1	Kg.

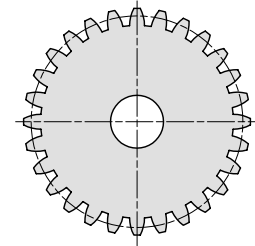
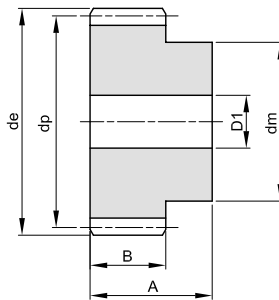


## RUOTE DENTATE CILINDRICHE IN ACCIAIO INOX CYLINDRICAL GEARS IN STAINLESS STEEL

**MODULO 2,5**

ANGOLO DI PRESSIONE **20°**

A	B
45	25



Materiale: INOX AISI 304 L

Z	codice	de	dp	dm	D1	Kg.
12	403025012	35,0	30,0	22	10	0,17
13	403025013	37,5	32,5	25	10	0,21
14	403025014	40,0	35,0	28	10	0,25
15	403025015	42,5	37,5	30	10	0,30
20	403025020	55,0	50,0	40	12	0,54
24	403025024	65,0	60,0	45	14	0,74
25	403025025	67,5	62,5	50	14	0,85
30	403025030	80,0	75,0	55	14	1,18
40	403025040	105,0	100,0	70	16	2,06
50	403025050	130,0	125,0	80	20	3,07
60	403025060	155,0	150,0	100	20	4,57

Z	codice	de	dp	dm	D1	Kg.

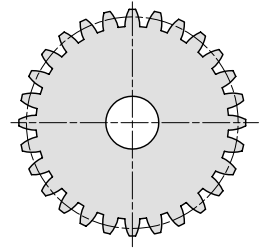
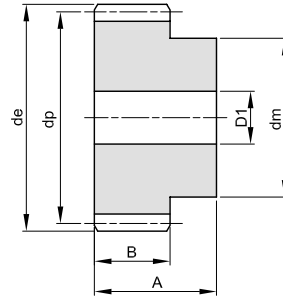
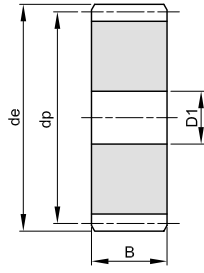


## RUOTE DENTATE CILINDRICHE IN ACCIAIO INOX CYLINDRICAL GEARS IN STAINLESS STEEL

### MODULO 3

ANGOLO DI PRESSIONE 20°

A	B
50	30



Materiale: INOX AISI 304 L

Z	codice	de	dp	dm	D1	Kg.
12	403030012	42	36	27	12	0,28
15	403030015	51	45	35	12	0,47
20	403030020	66	60	45	14	0,84
24	403030024	78	72	50	16	1,18
25	403030025	81	75	60	16	1,39
30	403030030	96	90	60	16	1,85
40	403030040	126	120	80	20	3,31
50	403030050	156	150		20	4,06
60	403030060	186	180		20	5,89

Z	codice	de	dp	dm	D1	Kg.

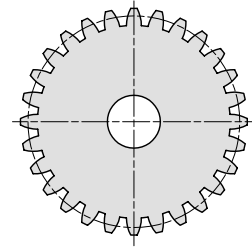
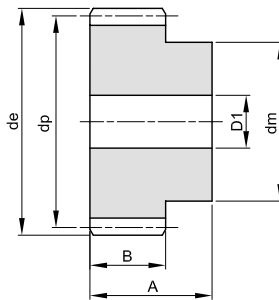


## RUOTE DENTATE CILINDRICHE IN ACCIAIO INOX CYLINDRICAL GEARS IN STAINLESS STEEL

### MODULO 4

ANGOLO DI PRESSIONE 20°

A	B
60	40



Materiale: INOX AISI 304 L

Z	codice	de	dp	dm	D1	Kg.
12	403040012	56	48	35	14	0,63
13	403040013	60	52	40	14	0,78
14	403040014	64	56	45	14	0,93
15	403040015	68	60	45	14	1,05
20	403040020	88	80	60	16	1,90
24	403040024	104	96	75	20	2,79
25	403040025	108	100	75	20	2,98
30	403040030	128	120	75	20	4,06

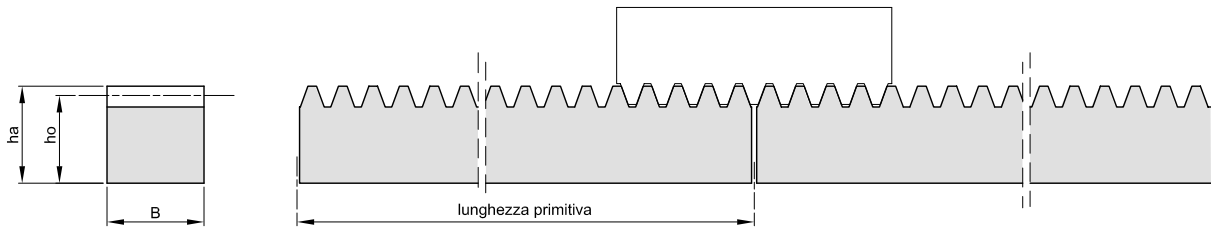
Z	codice	de	dp	dm	D1	Kg.





# CREMAGLIERE INTESTATE PER IL MONTAGGIO CONTINUO - ANGOLO DI PRESSIONE 20°

## RACKS FOR CONTINUOUS MOUNTING - PRESSURE ANGLE 20°

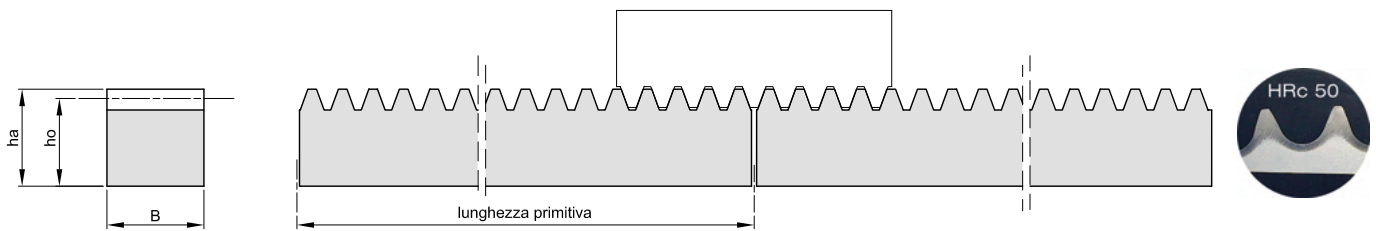


Materiale: Acciaio C45 / \* Materiale: Acciaio 40Cr

modulo x lunghezza	codice	lunghezza primitiva	denti	B x ha	ho	Kg.
1 x 500	490110050	499,51	159	15 x 15	14	0,8
1 x 1000	490110100	1002,17	319	15 x 15	14	1,6
1 x 2000	490110200	2001,19	637	15 x 15	14	3,3
1 x 3000	490110300	3000,22	955	15 x 15	14	4,9
1,5 x 500	490115050	499,51	106	17 x 17	15,5	1
1,5 x 1000	490115100	1003,74	213	17 x 17	15,5	2,1
1,5 x 2000	490115200	2002,77	425	17 x 17	15,5	4,1
1,5 x 3000	490115300	3001,79	637	17 x 17	15,5	6,1
2 x 500	490120050	502,65	80	20 x 20	18	1,4
2 x 1000	490120100	1005,31	160	20 x 20	18	2,8
2 x 2000	490120200	2004,34	319	20 x 20	18	5,6
2 x 3000	490120300	3003,36	478	20 x 20	18	8,4
2,5 x 500	490125050	502,65	64	25 x 25	22,5	2,2
2,5 x 1000	490125100	1005,31	128	25 x 25	22,5	4,4
2,5 x 2000	490125200	2002,77	255	25 x 25	22,5	8,7
2,5 x 3000	490125300	3000,22	382	25 x 25	22,5	13,0
3 x 500	490130050	499,51	53	30 x 30	27	3,2
3 x 1000	490130100	1008,45	107	30 x 30	27	6,3
3 x 2000	490130200	2007,48	213	30 x 30	27	12,6
3 x 3000	490130300	3006,5	319	30 x 30	27	18,6
4 x 1000	490440100	1005,31	80	30 x 30	26	6
4 x 2000	490440200	2010,62	160	30 x 30	26	11,94
4 x 500	490140050	502,65	40	40 x 40	36	5,6
4 x 1000	490140100	1005,31	80	40 x 40	36	11,2
4 x 2000	490140200	2010,62	160	40 x 40	36	22,4
4 x 3000	490140300	3003,36	239	40 x 40	36	31,3
* 5 x 500	490150050	502,65	32	50 x 50	45	8,7
* 5 x 1000	490150100	1005,31	64	50 x 50	45	17,5
* 5 x 2000	490150200	2010,62	128	50 x 50	45	35
* 5 x 3000	490150300	3000,22	191	50 x 50	45	52
* 6 x 1000	490160100	1017,88	54	60 x 60	54	25,2
* 6 x 2000	490160200	2016,90	107	60 x 60	54	50,4
* 8 x 1000	490180100	1005,31	40	80 x 80	72	44
* 8 x 2000	490180200	2010,62	80	80 x 80	72	89



## CREMAGLIERE INTESTATE PER IL MONTAGGIO CONTINUO - TEMPRATE AD INDUZIONE RACKS FOR CONTINUOUS MOUNTING WITH HARDENED TEETH



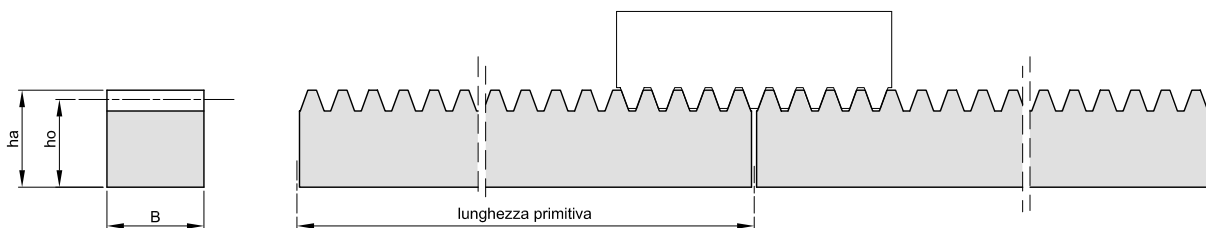
Angolo di pressione 20° / Pressure angle 20°

Materiale: Acciaio C45 / \* Materiale: Acciaio 40 Cr

modulo x lunghezza	codice	lunghezza primitiva	denti	B x ha	ho	Kg.
2 x 1000	492120100	1005,31	160	20 x 20	18	2,8
2 x 2000	492120200	2004,34	319	20 x 20	18	5,6
2,5 x 1000	492125100	1005,31	128	25 x 25	22,5	4,4
2,5 x 2000	492125200	2002,77	255	25 x 25	22,5	8,7
3 x 1000	492130100	1008,45	107	30 x 30	27	6,3
3 x 2000	492130200	2007,48	213	30 x 30	27	12,6
4 x 1000	492140100	1005,31	80	40 x 40	36	11,2
4 x 2000	492140200	2010,62	160	40 x 40	36	22,4
* 5 x 1000	492150100	1005,31	64	50 x 50	45	17,5
* 5 x 2000	492150200	2010,62	128	50 x 50	45	35,0
* 6 x 1000	492160100	1017,88	54	60 x 60	54	25,2
* 6 x 2000	492160200	2016,90	107	60 x 60	54	50,4



## CREMAGLIERE INTESTATE PER IL MONTAGGIO CONTINUO IN ACCIAIO INOX RACKS FOR CONTINUOUS MOUNTING IN STAINLESS STEEL



Angolo di pressione 20° / Pressure angle 20°

Materiale: INOX AISI 304

modulo x lunghezza	codice	lunghezza primitiva	denti	B x ha	ho	Kg.
1 x 1000	493110100	1002,17	319	15 x 15	14	1,6
1 x 2000	493110200	2001,19	637	15 x 15	14	3,3
1,5 x 1000	493115100	1003,74	213	17 x 17	15,5	2,1
1,5 x 2000	493115200	2002,77	425	17 x 17	15,5	4,1
2 x 1000	493120100	1005,31	160	20 x 20	18	2,8
2 x 2000	493120200	2004,34	319	20 x 20	18	5,6
2,5 x 1000	493125100	1005,31	128	25 x 25	22,5	4,4
2,5 x 2000	493125200	2002,77	255	25 x 25	22,5	8,7
3 x 1000	493130100	1008,45	107	30 x 30	27	6,3
3 x 2000	493130200	2007,48	213	30 x 30	27	12,6
4 x 1000	493140100	1005,31	80	40 x 40	36	11,2
4 x 2000	493140200	2010,62	160	40 x 40	36	22,4