

### QUICK SELECTION / Selezione veloce

input speed ( $n_1$ ) = 1400 min<sup>-1</sup>

| Output Speed<br>$n_2$<br>[min <sup>-1</sup> ] | Ratio<br>$i$ | Motor power<br>$P_{1M}$<br>[kW] | Output torque<br>$M_{2M}$<br>[Nm] | Service factor<br>f.s. | Nominal power<br>$P_{1R}$<br>[kW] | Nominal torque<br>$M_{2R}$<br>[Nm] | Available B5 motor flanges |    |    | Available B14 motor flanges |    | Dynamic efficiency<br><b>RD</b> | Tooth Module<br><br>[mm] | Ratios code<br> |
|-----------------------------------------------|--------------|---------------------------------|-----------------------------------|------------------------|-----------------------------------|------------------------------------|----------------------------|----|----|-----------------------------|----|---------------------------------|--------------------------|-----------------|
|                                               |              |                                 |                                   |                        |                                   |                                    | A                          | B  | C  | P                           | Q  |                                 |                          |                 |
|                                               |              |                                 |                                   |                        |                                   |                                    | 56                         | 63 | 71 | 63                          | 71 |                                 |                          |                 |
| 47                                            | <b>30.1</b>  | 0.25                            | 38                                | 1.4                    | <b>0.36</b>                       | <b>55</b>                          |                            |    |    | <b>C</b>                    |    | 74                              | 2.2                      | 01              |
| 33                                            | <b>43.0</b>  | 0.25                            | 53                                | 1.0                    | <b>0.26</b>                       | <b>55</b>                          |                            |    |    | <b>C</b>                    |    | 72                              | 2.2                      | 02              |
| 23                                            | <b>60.2</b>  | 0.25                            | 62                                | 0.9                    | <b>0.22</b>                       | <b>55</b>                          |                            |    |    | <b>C</b>                    |    | 60                              | 2.4                      | 03              |
| 15.5                                          | <b>90.3</b>  | 0.12                            | 42                                | 1.3                    | <b>0.16</b>                       | <b>55</b>                          |                            |    |    | <b>C</b>                    |    | 57                              | 1.6                      | 04              |
| 11.6                                          | <b>120</b>   | 0.12                            | 52                                | 1.1                    | <b>0.13</b>                       | <b>55</b>                          |                            |    |    | <b>C</b>                    |    | 53                              | 2.5                      | 05              |
| 8.8                                           | <b>159</b>   | 0.12                            | 64                                | 0.9                    | <b>0.10</b>                       | <b>55</b>                          |                            |    |    | <b>C</b>                    |    | 49                              | 1.8                      | 06              |
| 7.1                                           | <b>198</b>   | 0.12*                           | 55                                | <0.8                   | <b>0.09</b>                       | <b>55</b>                          |                            |    |    | <b>C</b>                    |    | 47                              | 1.5                      | 07              |
| 5.4                                           | <b>258</b>   | 0.12*                           | 55                                | <0.8                   | <b>0.07</b>                       | <b>55</b>                          |                            |    |    | <b>C</b>                    |    | 45                              | 1.2                      | 08              |
| 4.7                                           | <b>301</b>   | 0.12*                           | 39                                | <0.8                   | <b>0.05</b>                       | <b>39</b>                          |                            |    |    | <b>C</b>                    |    | 40                              | 1.0                      | 09              |
| 3.2                                           | <b>439</b>   | 0.12*                           | 39                                | <0.8                   | <b>0.04</b>                       | <b>39</b>                          |                            |    |    | <b>C</b>                    |    | 36                              | 0.72                     | 10              |

**A) Motor Flanges Available**  
Flange Motore Disponibili

**B) Supplied with Reduction Bushing**  
Fornito con Bussola di Riduzione

**Available on Request without reduction bushing**  
Disponibile a Richiesta senza Bussola di Riduzione

**C) Motor Flange Holes Position**  
Posizione Fori Flangia Motore

\* Power higher than the maximum one which can be supported by the gearbox. Select according to the torque  $M_{2R}$   
Potenza superiore a quella massima sopportabile dal riduttore. Selezionare in base al momento torcente  $M_{2R}$

**EN** Unit **P4Q** is supplied with synthetic oil, providing "long life" lubrication. For mounting position V5-V6 please contact us. See table 1 for lubrication and recommended quantity. In table 2 please see possible radial loads and axial loads on the gearbox.

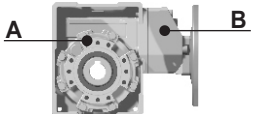
**I** Il riduttore tipo **P4Q** viene fornito lubrificato a vita con olio sintetico. Per posizioni V5-V6 contattare il ns. servizio tecnico. Vedi tab.1 per oli e quantità consigliati. In tab.2 sono presenti i carichi radiali e assiali applicabili al riduttore.

**D** Für die Lebensdauerschmierung ist das Getriebe der Größe **P4Q** mit synthetischem Öl befüllt. Bei Einbaulage V5 oder V6 bitten wir um Rücksprache. In Tabelle 1 ist die Schmiermenge und das empfohlene Schmiermittel angegeben. In Tabelle 2 sind die zulässigen Radial- und Axialbelastungen des Getriebes aufgeführt.

**F** Le réducteur de type **P4Q** est fourni lubrifié à vie avec de l'huile synthétique. Concernant les positions V5.V6, contactez notre service d'assistance technique. Voir tableau 1 concernant les huiles et les quantités conseillées. Les charges radiales et axiales applicables au réducteur sont précisées dans le tableau 2.

**E** El reductor tamaño **P4Q** se suministra, lubricado de por vida con aceite sintético. Para las posiciones V5 y V6 contactar con nuestro servicio técnico. Ver tabla 1, para cantidades y aceites recomendados. En la tabla 2, se encuentran las cargas radiales y axiales admitidas por el reductor.

**LUBRICATION P4Q Oil**  
Common lubrication 0.17 l (A + B).

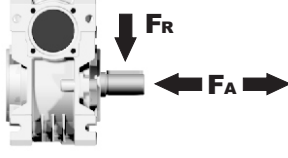


|                            |                              |
|----------------------------|------------------------------|
| <b>AGIP</b> Telium VSF 320 | <b>SHELL</b> Omala S4 WE 320 |
|----------------------------|------------------------------|

For all details on lubrication and plugs check our website **tab. 1**  
Per maggiori dettagli su lubrificazione e tappi olio vedi il nostro sito web

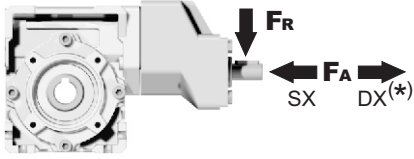
### RADIAL AND AXIAL LOADS

**Output shaft**  
Albero di uscita



| $n_2$<br>[min <sup>-1</sup> ] | FA<br>[N] | FR<br>[N] |
|-------------------------------|-----------|-----------|
| 75                            | 240       | 1200      |
| 50                            | 260       | 1400      |
| 25                            | 300       | 1800      |
| 15-6                          | 400       | 2000      |

**Input shaft**  
albero in entrata



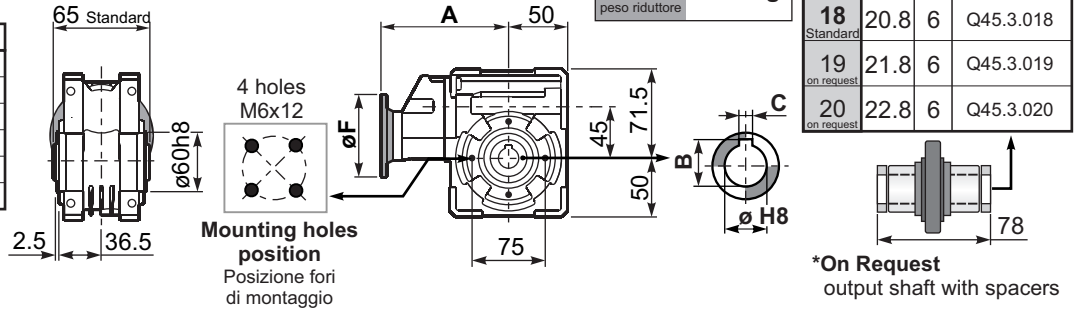
| $n_1$<br>[min <sup>-1</sup> ] | FA<br>[N] | FR<br>[N] |
|-------------------------------|-----------|-----------|
| 1400                          | 44        | 220       |

\*Strong axial loads in the DX direction are not allowed.  
Non sono consentiti forti carichi assiali con direzione DX

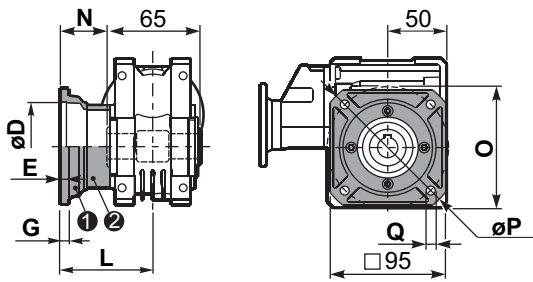
tab. 2

**PP4QFB...** Basic wormbox  
Riduttore base

| M. flanges | Kit code   | øF  | A     |
|------------|------------|-----|-------|
| 56B5       | K050.4.046 | 120 | 143.5 |
| 63B5       | K050.4.041 | 138 | 145.5 |
| 71B5       | K050.4.042 | 160 | 143   |
| 63B14      | K050.4.047 | 90  | 145.5 |
| 71B14      | K050.4.045 | 105 | 143   |

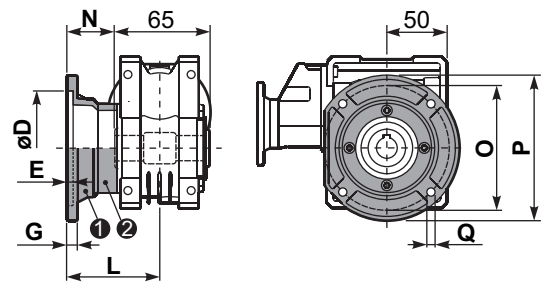


**PP4QFC...** Square flange  
Flangia quadrata



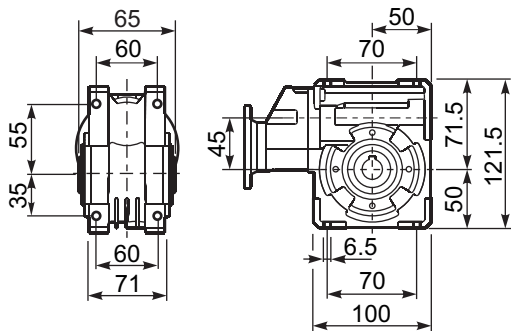
| type B | øD    | E | G | L  | N    | O  | P   | Q | kit code   |
|--------|-------|---|---|----|------|----|-----|---|------------|
| FC     | 60 H8 | 4 | 7 | 67 | 34.5 | 75 | 110 | 9 | KQ45.9.010 |
| FL     | 60 H8 | 4 | 7 | 97 | 64.5 | 75 | 110 | 9 | KQ45.9.011 |

**PP4QF1...** Round flange  
Flangia rotonda

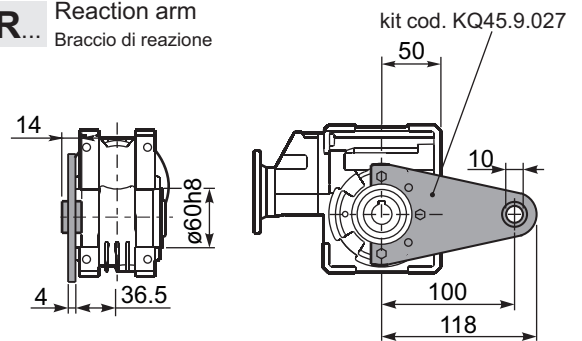


| type S | øD   | E | G  | L  | N    | O   | P   | Q   | kit code    |
|--------|------|---|----|----|------|-----|-----|-----|-------------|
| F1     | 95H8 | 5 | 9  | 80 | 47.5 | 115 | 140 | 9.5 | KSQ45.9.012 |
| F2     | 80H8 | 5 | 12 | 58 | 25.5 | 100 | 120 | 9   | KSQ45.9.013 |

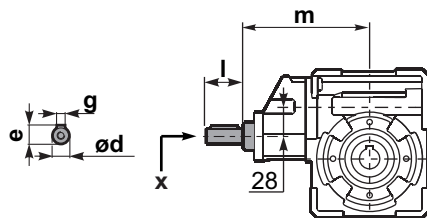
**PP4QFB...** Feet  
Piedini



**PP4QBR...** Reaction arm  
Braccio di reazione

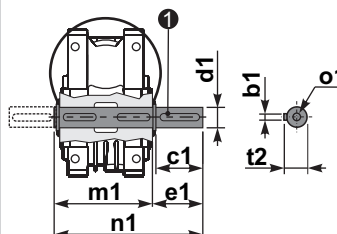


**RP4QFB...** Input shaft  
Albero in entrata



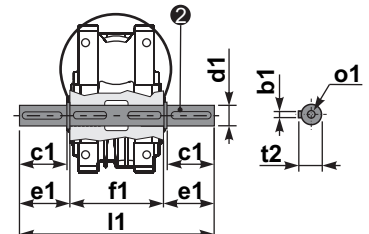
|        | ød    | e  | g | l  | m   | x     |           |
|--------|-------|----|---|----|-----|-------|-----------|
| type B | 14 h6 | 16 | 5 | 25 | 141 | M5x13 | C35.5.061 |
| type S | -     | -  | - | -  | -   | -     |           |

**PP4Q.....S...** Single Shaft  
Albero lento semplice



① kit cod. K045.5.028 type B  
kit cod. KS045.5.030 type S

**PP4Q.....D...** Double Shaft  
Albero lento bisp.



② kit cod. K045.5.029 type B  
kit cod. KS045.5.031 type S

|        | b1 | c1 | d1                             | e1   | f1 | l1  | m1 | n1    | t2   | o1    |
|--------|----|----|--------------------------------|------|----|-----|----|-------|------|-------|
| type B | 6  | 32 | 18 <sup>-0.005</sup><br>-0.020 | 43   | 65 | 151 | 70 | 113   | 20.5 | M6x18 |
| type S | 6  | 40 | 19 <sup>-0.005</sup><br>-0.020 | 58.5 | 65 | 182 | 70 | 128.5 | 21.5 | M8x20 |