



QUICK SELECTION / Selezione veloce

input speed (n_1) = 1400 min⁻¹

| Output Speed n_2 [min ⁻¹] | Ratio i | Motor power P_{1M} [kW] | Output torque M_{2M} [Nm] | Service factor $f.s.$ | Nominal power P_{1R} [kW] | Nominal torque M_{2R} [Nm] | Available B5 motor flanges | | | | | Available B14 motor flanges | | | | Output Shaft | Output Shaft | Ratios code |
|---|--------------|---------------------------------|-----------------------------------|--------------------------|-----------------------------------|------------------------------------|----------------------------|----|----|------------|-----|-----------------------------|----|------------|-----|------------------|------------------|-----------------|
| | | | | | | | -C | -D | -E | -F | -G | -R | -T | -U | -V | | | |
| | | | | | | | 71 | 80 | 90 | 100 112 | 132 | 80 | 90 | 100 112 | 132 | | | |
| 213 | 6.57 | 5.5 | 230 | 1.2 | 6.5 | 280 | B | | | | | | | | | | 3018 | 01 |
| 185 | 7.56 | 5.5 | 265 | 1.1 | 5.9 | 290 | B | | | | | | | | | | 3016 | 02 |
| 159 | 8.82 | 5.5 | 309 | 1.0 | 5.5 | 320 | B | | | | | | | | | | 3014 | 03 |
| 113 | 12.39 | 5.5 | 434 | 1.0 | 5.5 | 450 | B | | | | | | | | | | 2018 | 04 |
| 98 | 14.24 | 5.5 | 499 | 0.9 | 4.8 | 450 | B | | | | | | | | | | 2016 | 05 |
| 84 | 16.75 | 4 | 429 | 1.1 | 4.3 | 470 | B | | | | | | | | | | 1618 | 06 |
| 73 | 19.25 | 4 | 494 | 1.0 | 3.9 | 490 | B | | | | | | | | | | 1616 | 07 |
| 64 | 21.78 | 4 | 558 | 0.9 | 3.4 | 490 | B | | | | | | | | | | 1318 | 08 |
| 56 | 25.04 | 3 | 483 | 1.0 | 3.0 | 490 | B | | | | | | | | | | 1316 | 09 |
| 47.9 | 29.23 | 3 | 564 | 0.9 | 2.6 | 490 | B | | | | | | | | | | 1314 | 10 |
| 45.7 | 30.65 | 2.2 | 436 | 1.1 | 2.4 | 490 | B | | | | | | | | | | 1116 | 11 |
| 39.1 | 35.78 | 2.2 | 509 | 1.0 | 2.1 | 490 | B | | | | | | | | | | 1114 | 12 |
| 36.3 | 38.55 | 2.2 | 548 | 0.9 | 1.9 | 490 | B | | | | | | | | | | 818 | 13 |
| 31.6 | 44.32 | 1.5 | 434 | 1.1 | 1.7 | 490 | B | | | | | | | | | | 816 | 14 |
| 27.1 | 51.74 | 1.5 | 507 | 1.0 | 1.4 | 490 | B | | | | | | | | | | 814 | 15 |
| 22.9 | 61.03 | 1.1 | 437 | 1.1 | 1.2 | 480 | B | | | | | | | | | | 616 | 16 |
| 19.6 | 71.25 | 1.1 | 510 | 1.0 | 1.1 | 490 | B | | | | | | | | | | 614 | 17 |

The dynamic efficiency is **0.96** for all ratios

Motor Flanges Available
Flange Motore Disponibili

B) Supplied with Reduction Bushing
Fornito con Bussola di Riduzione

B) Available on Request without reduction bushing
Disponibile a Richiesta senza Bussola di Riduzione

C) Motor Flange Holes Position
Posizione Fori Flangia Motore

EN Unit **FA52** is supplied with synthetic oil for lifetime lubrication, no maintenance is necessary. See table 1 for lubrication and recommended quantity. In table 2 please see possible radial loads and axial loads on the gearbox.

I Il riduttore **FA52** viene fornito completo di olio sintetico per la lubrificazione permanente e non necessita di alcuna manutenzione. Vedi tab.1 per oli e quantità consigliati. In tab.2 sono presenti i carichi radiali e assiali applicabili al riduttore.

D Das Getriebe **FA52** ist mit synthetischem Öl gefüllt und ist lebensdauergeschmiert. In Tabelle 1 ist die Schmiermenge und das empfohlene Schmiermittel angegeben. In Tabelle 2 sind die zulässigen Radial- und Axialbelastungen des Getriebes aufgeführt.

F Le réducteur **FA52** est fourni complet avec de l'huile synthétique pour la lubrification permanente et ne nécessite aucun entretien. Voir tableau 1 concernant les huiles et les quantités conseillées. Les charges radiales et axiales applicables au réducteur sont précisées dans le tableau 2.

E El reductor tamaño **FA52** se suministra, lubricado de por vida con aceite sintético y no requieren mantenimiento alguna. Ver tabla 1, para cantidades y aceites recomendados. En la tabla 2, se encuentran las cargas radiales y axiales admitidas por el reductor.

| Standard supplied | For these mounting position specify in the order or add oil Per queste posizioni specificare in fase d'ordine o aggiungere olio | | | | |
|---------------------|--|---------|-----------------------|---------|---------|
| | | | | | |
| 1.85 LT | 1.15 LT | 1.15 LT | 1.30 LT | 2.10 LT | 1.30 LT |
| AGIP Telium VSF 320 | | | SHELL Omala S4 WE 320 | | |

For all details on lubrication and plugs check our website **tab. 1**
Per maggiori dettagli su lubrificazione e tappi olio vedi il nostro sito web

RADIAL AND AXIAL LOADS

Output shaft
Albero di uscita

$F_{eq} = FR \cdot \frac{149.5}{X+119.5}$

| n_2 | FA | FR | n_2 | FA | FR | n_2 | FA | FR |
|-------|-----|------|-------|-----|------|-------|------|------|
| 300 | 400 | 2000 | 140 | 460 | 2300 | 70 | 580 | 2900 |
| 250 | 420 | 2100 | 120 | 500 | 2500 | 40 | 780 | 3900 |
| 200 | 440 | 2200 | 85 | 550 | 2750 | 15 | 1140 | 5700 |

On request reinforced bearings to increase loads.
A richiesta cuscinetti rinforzati per aumentare i carichi.

Input shaft
Albero in entrata

| n_1 | FA | FR |
|-------|-----|------|
| 1400 | 400 | 2000 |
| 900 | 440 | 2200 |
| 500 | 440 | 2200 |

tab. 2

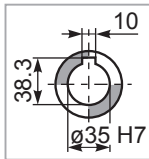
PFA52C...

Basic gearbox
Riduttore base

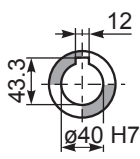
Gearbox weight
peso riduttore **15.5 kg**

| M. flanges | Kit code | øF | A |
|------------|------------|-----|-----|
| 71B5 | K023.4.041 | 160 | 227 |
| 80/90B5 | K023.4.042 | 200 | 229 |
| 100/112B5 | K023.4.043 | 250 | 238 |
| 132B5 | KC50.4.043 | 300 | 256 |
| | | | |
| 80B14 | K085.4.046 | 120 | 229 |
| 90B14 | K085.4.045 | 140 | 229 |
| 100/112B14 | K085.4.047 | 160 | 238 |
| 132B14 | KC50.4.041 | 200 | 256 |

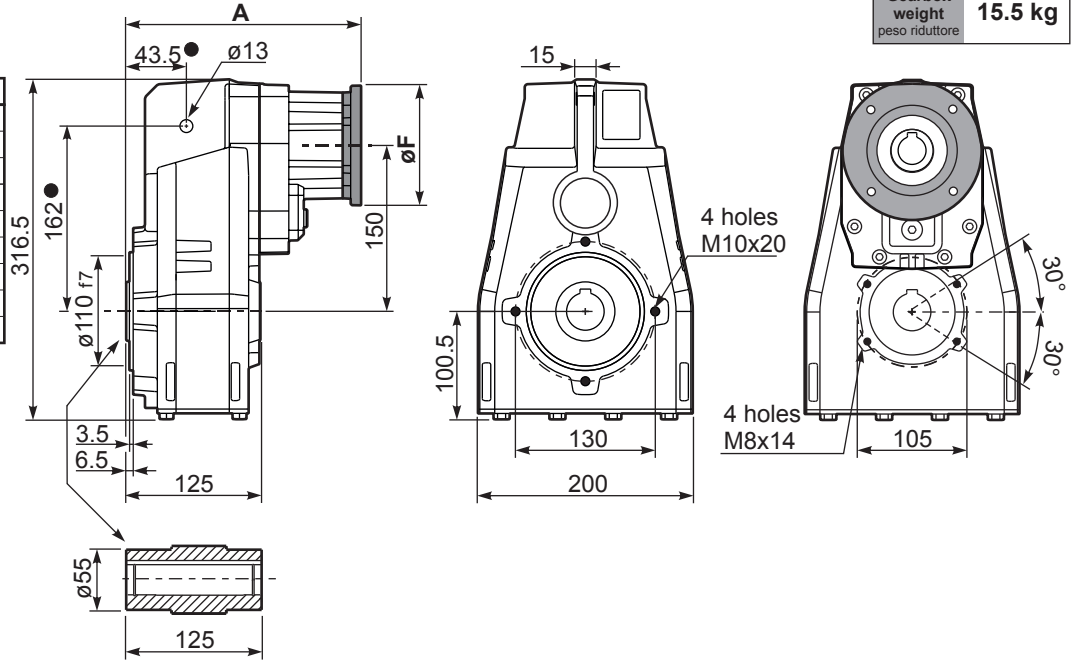
● Available torque arms,
see our web site
Bracci di reazione disponibili,
consulta il nostro sito web



Standard
Hollow shaft



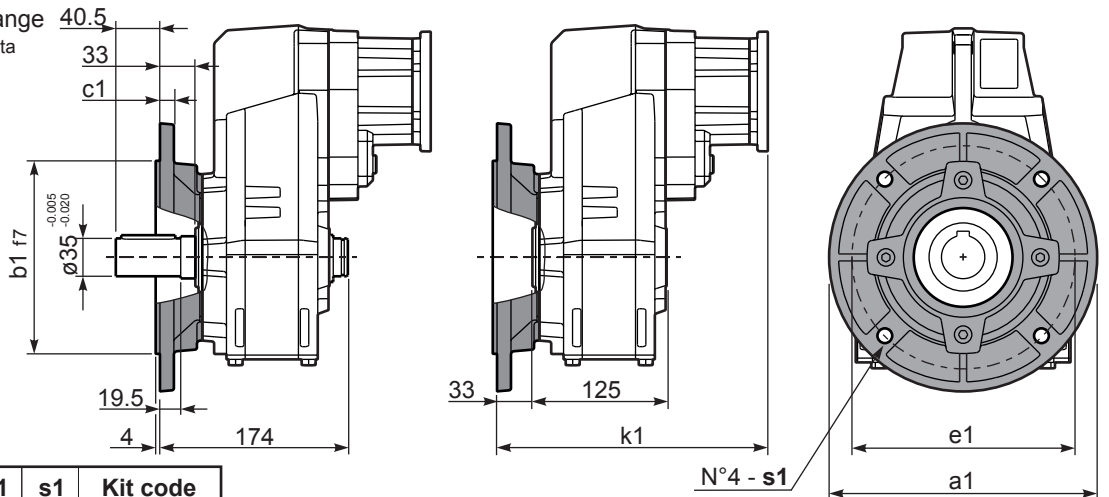
On request
A richiesta



PFA52...-F...

Output flange
Flangia uscita

| M. flanges | k1 |
|------------|-------|
| 71B5 | 260 |
| 80/90B5 | 262 |
| 100/112B5 | 268 |
| 132B5 | 289.5 |
| | |
| 80B14 | 260 |
| 90B14 | 260 |
| 100/112B14 | 271 |
| 132B14 | 289.5 |

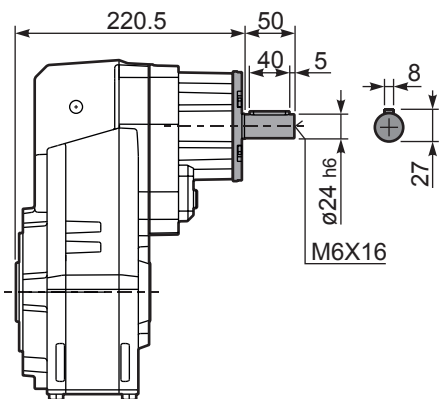


Available output flanges
Flange di uscita

| a1 ø | b1 | c1 | e1 | s1 | Kit code |
|------|-----|----|-----|----|------------|
| 250 | 180 | 13 | 215 | 14 | KF60.9.011 |
| 300 | 230 | 16 | 265 | 14 | KF60.9.012 |

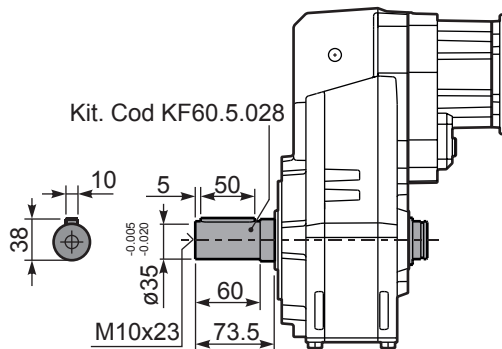
RFA52C...

Input Shaft
Albero in entrata



PFA52 A...

Single output shaft
Albero uscita semplice



PFA52D...

Shrink disk
Calettatore

