



4.8 **Dimensioni**

4.8 **Dimensions**

4.8 **Abmessungen**

	PA...A - PA...B - PC...B												
	63		80		100		125		160				
<b>A</b>	194		266		331		405		510				
<b>B</b>	97		120		143		164		196				
<b>C2</b>	101		130		155		180		220				
<b>D2<sub>H7</sub></b>	25	28	30	30	35	38	40	45	50	55	60	65	70
<b>E</b>	140		196		242		293		367				
<b>G</b>	68		82		100		118		146				
<b>H</b>	70		98		121		146.5		183.5				
<b>O</b>	61.5		79.5		99.5		123.5		157				
<b>P</b>	30.3		43.9		59.6		72.4		85.1				
<b>R</b>	17.7		20.1		22.4		29.6		41.9				

PA...A					
<b>D1<sub>h6</sub></b>	19	24	28	38	48
<b>V</b>	40	50	60	80	80
<b>L</b>	157	194	229	281	342
<b>U</b>	66	79	91	111	152
<b>kg</b>	10	16	28	52	108

PA...B					
<b>D1<sub>h6</sub></b>	14	19	24	28	38
<b>V</b>	30	40	50	60	80
<b>L</b>	138	171	206	241	301.5
<b>U</b>	57.5	66	78.5	91	111.5
<b>kg</b>	12	18	34	58	120

	PC...B							
	63				80			
<b>IEC</b>	63 B5	71 B5	80/90 B5	80 B14	71 B5	80/90 B5	*90 B14	100/112 B5
<b>Y</b>	140	160	200	120	160	200	□120 / R 73	250
<b>L1</b>	141	148	168	168	173	193	193	203
<b>U1</b>	90.5	97.5	117.5	117.5	108	128	128	138

\* Flange quadrate / Square flanges / Viereckige Flansche

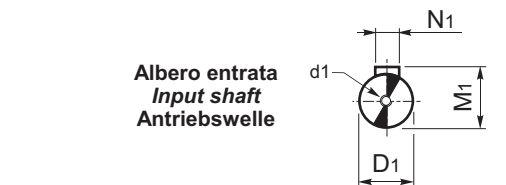
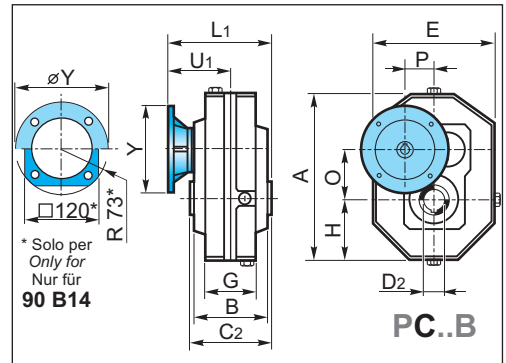
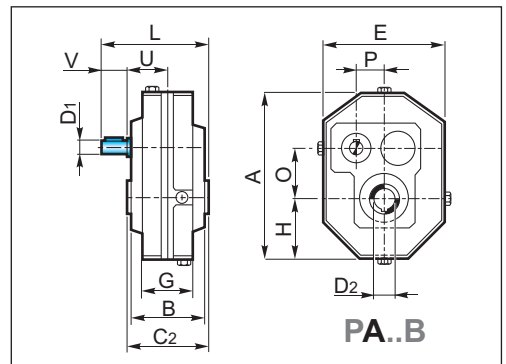
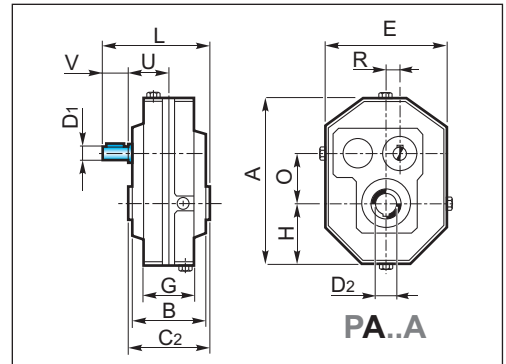
	PC...B										
	100			125				160			
<b>IEC</b>	80/90 B5	100/112 B5	132 B5	80/90 B5	100/112 B5	132 B5	160/180 B5	100/112 B5	132 B5	160/180 B5	200 B5
<b>Y</b>	200	250	300	200	250	300	350	250	300	350	400
<b>L1</b>	221	231	253	244	254	276	306	298	348	348	348
<b>U1</b>	143.5	153.5	175.5	154	164	186	216	188	238	238	238

PA...A					
	63	80	100	125	160
<b>D1<sub>h6</sub></b>	19	24	28	38	48
<b>d1</b>	M8	M8	M8	M10	M12
<b>M1</b>	21.5	27	31	41	51.5
<b>N1</b>	6	8	8	10	14

PA...B					
	63	80	100	125	160
<b>D1<sub>h6</sub></b>	14	19	24	28	38
<b>d1</b>	M6	M8	M8	M8	M10
<b>M1</b>	16	21.5	27	31	41
<b>N1</b>	5	6	8	8	10

PA...A - PA...B - PC...B															
	63			80			100			125			160		
	<b>C2</b>	101			130			155			180			220	
<b>D2<sub>H7</sub></b>	25	28	30	30	35	38	40	45	50	55	60	65	70		
<b>M2</b>	28.3	31.3	33.3	33.3	38.3	41.3	43.3	48.8	54.3	59.3	64.4	69.4	79.4		
<b>N2</b>	8	8	8	8	10	10	12	14	14	16	18	18	20		
<b>Z</b>	7.3	7.3	7.3	8.5	8.5	8.5	10.8	10.8	12	12	15.5	15.5	15.5		



Albero uscita cavo  
Hollow output shaft  
Abtriebshohlwelle

