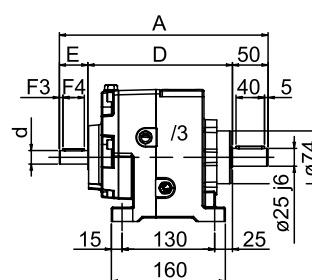
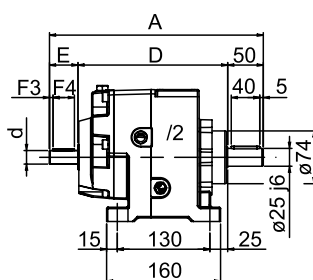
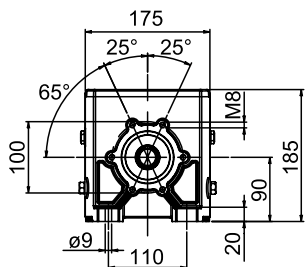


NHL 25 - RIDUTTORE

NHL 25 - GEARBOX

NHL 25 - GETRIEBE

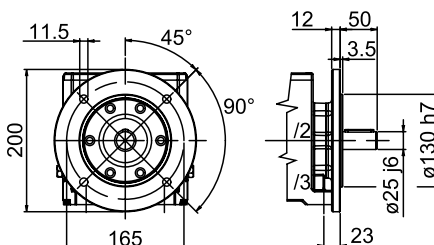
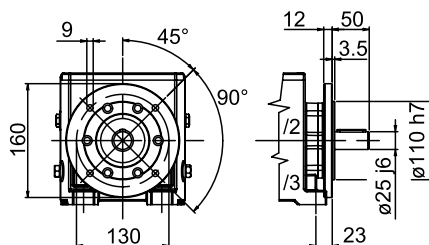
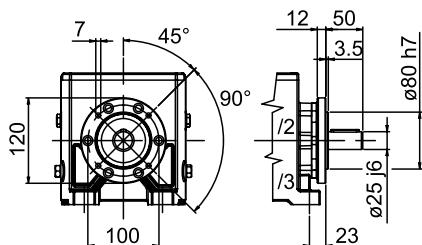


NHL-MNHL

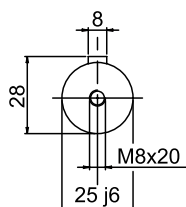
FLANGIA RIPORTATA

MODULAR FLANGE

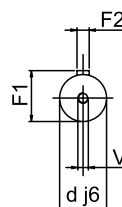
EINGEBAUTER FLANSCH



ALBERO USCITA
OUTPUT SHAFT
ABTRIEBSWELLE



ALBERO ENTRATA
INPUT SHAFT
ANTRIEBSWELLE



25/2 - 25/3	A	D	E	d	F1	F2	F3	F4	V
/2	300	210	40	19	21,5	6	5	30	M5
/2 F-120	300	210	40	19	21,5	6	5	30	M5
/2 F-160	300	210	40	19	21,5	6	5	30	M5
/2 F-200	300	210	40	19	21,5	6	5	30	M5
/3	293	203	40	19	21,5	6	5	30	M5
/3 F-120	293	203	40	19	21,5	6	5	30	M5
/3 F-160	293	203	40	19	21,5	6	5	30	M5
/3 F-200	293	203	40	19	21,5	6	5	30	M5