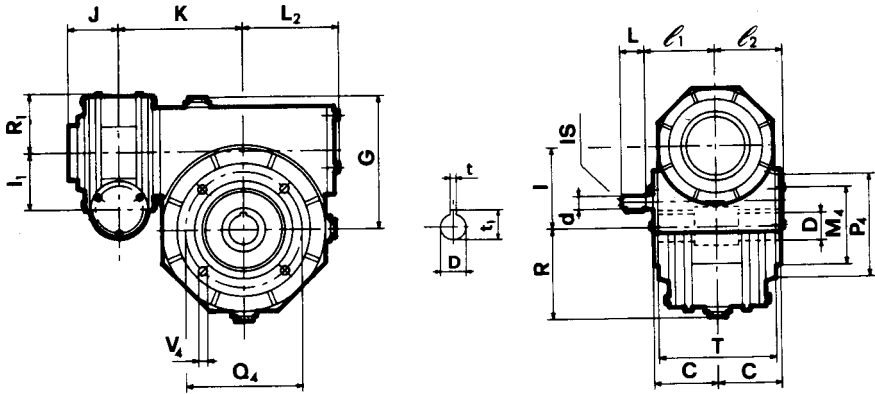
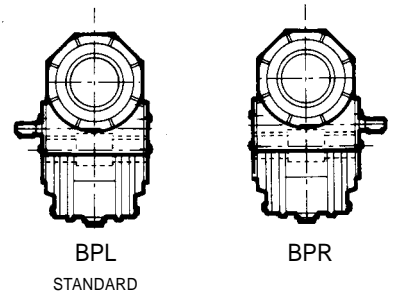


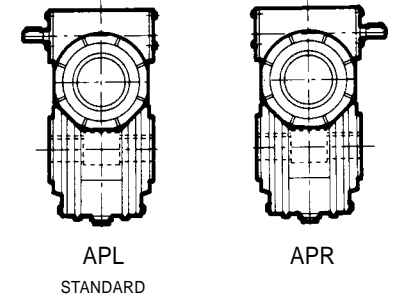
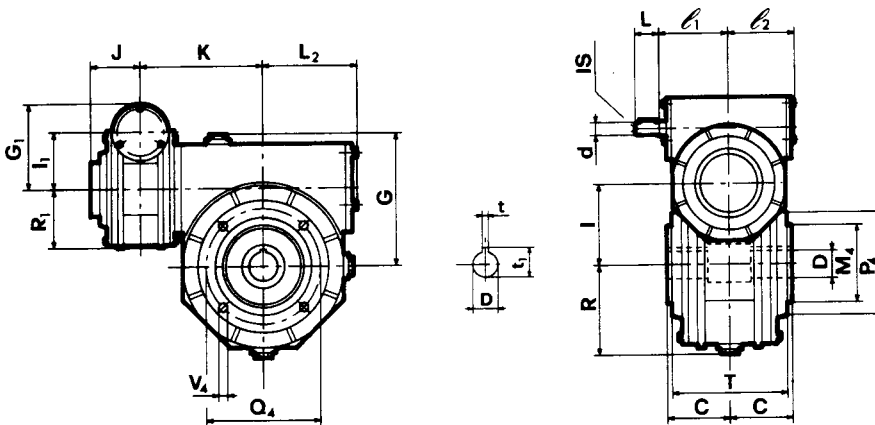
CI...B - I...FP



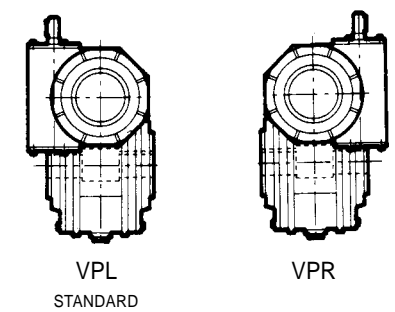
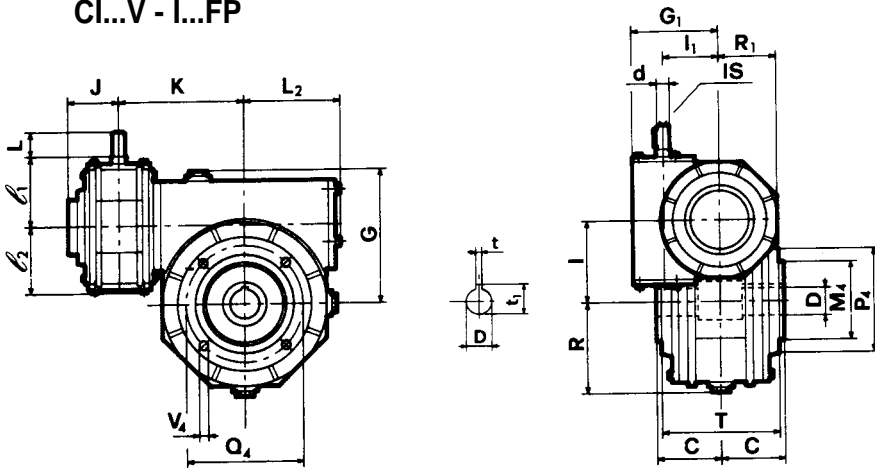
ESECUZIONE / EXECUTION / BAUFORM



CI...A - I...FP

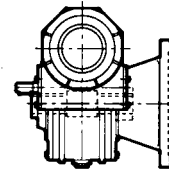
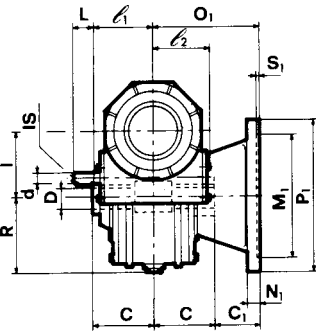
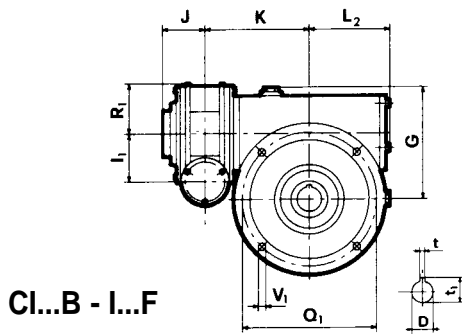


CI...V - I...FP

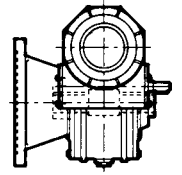


	C ₁	M ₁ G6	M ₄ G6	N ₁	O ₁	P ₁	P ₄	Q ₁	Q ₄	S ₁	V ₁	V ₄	d j6	G	G ₁	l	l ₁	l _s	L	e ₁	L ₂	e ₂	R	R ₁	T	J	K	C	D H7	t	t ₁
CI 50 I 80	50	130	110	13	120	200	145	165	130	5	11,5	M10	14	134	83	80	50	M5	30	73	105	69	95	65	133	49	165,5	70	35	10	38,3
CI 50 I 90	52	180	110	14	127	250	160	215	130	5	14	M10	14	147	83	90	50	M5	30	73	124	69	111	65	143	49	180	75	38	10	41,3
CI 70 I 110	72,5	180	130	18	150	250	200	215	165	5	15	M12	19	170	113	110	70	M8	40	94,5	144	92	141	90	148	60,5	212	78	42	12	45,3
CI 70 I 130	55	230	180	18	150	300	240	265	215	5	15	M12	19	194	113	130	70	M8	40	94,5	160	92	155	90	172	60,5	235,5	95	48	14	51,8
CI 90 I 150	65	250	180	20	175	350	250	300	215	6	17	M14	24	225	147	150	90	M8	50	126	190	124	182	121	204	75	319,5	110	55	16	60,3
CI 90 I 175	95	300	-	22	210	400	-	350	-	6	18	-14	24	258	147	175	90	M8	50	126	204	124	203	121	-	75	340,5	115	60	18	64,4

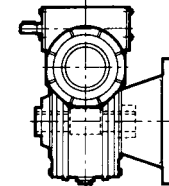
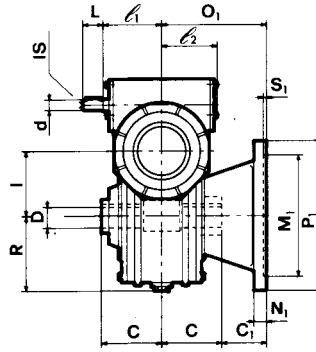
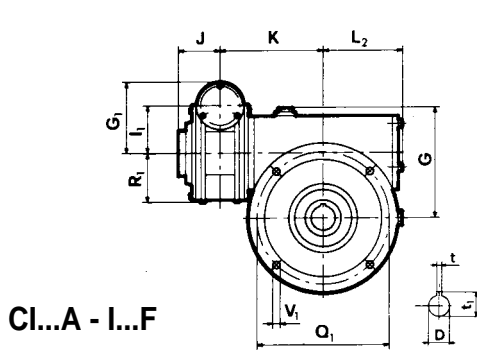
ESECUZIONE / EXECUTION / BAUFORM



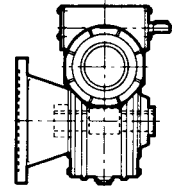
BFL
STANDARD



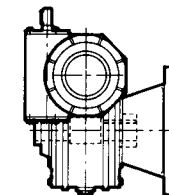
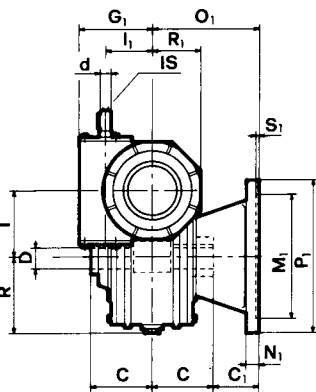
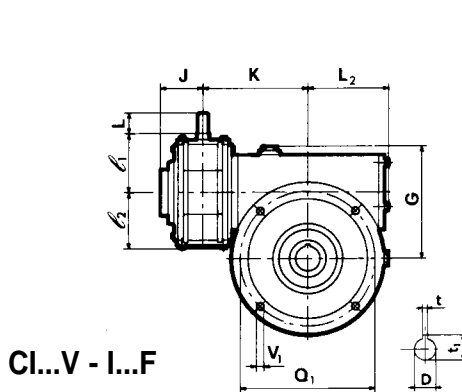
BFR



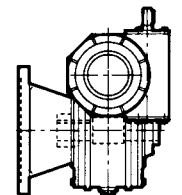
AFL
STANDARD



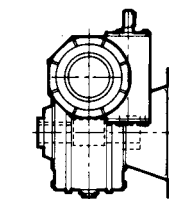
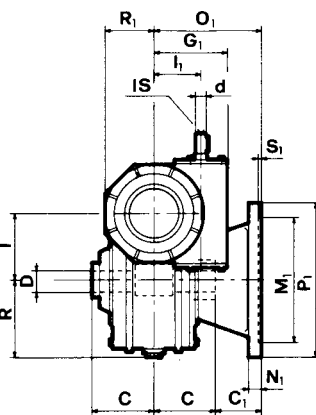
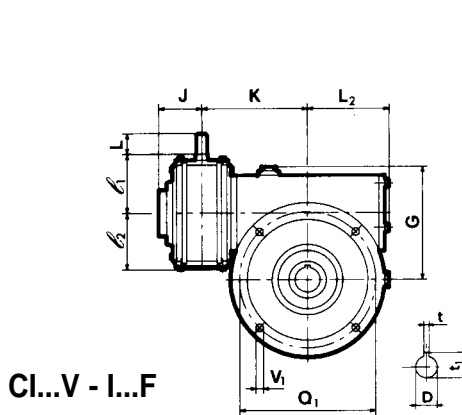
AFR



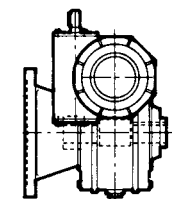
VFL
STANDARD



VFR

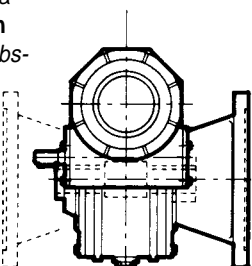


VFRR
STANDARD

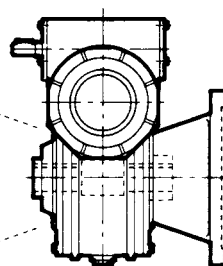


VFLL

Posizione flangia
Flange position
Lage des Abtriebsflanschs



L

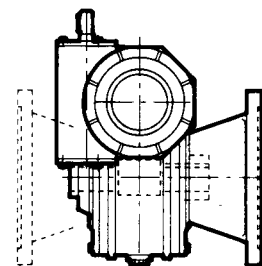


L

R

(STANDARD)

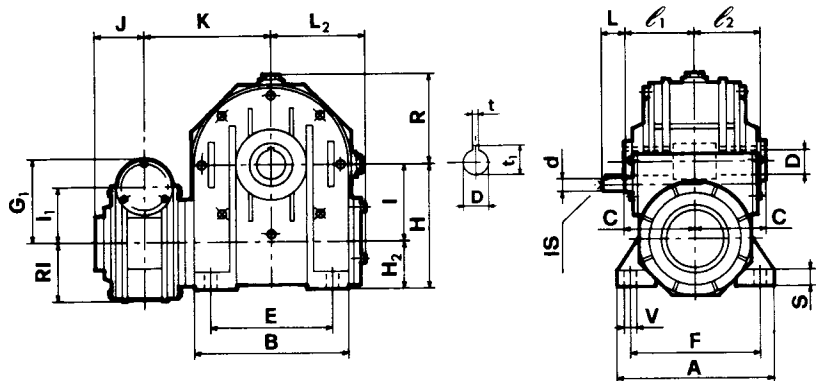
(STANDARD)



L

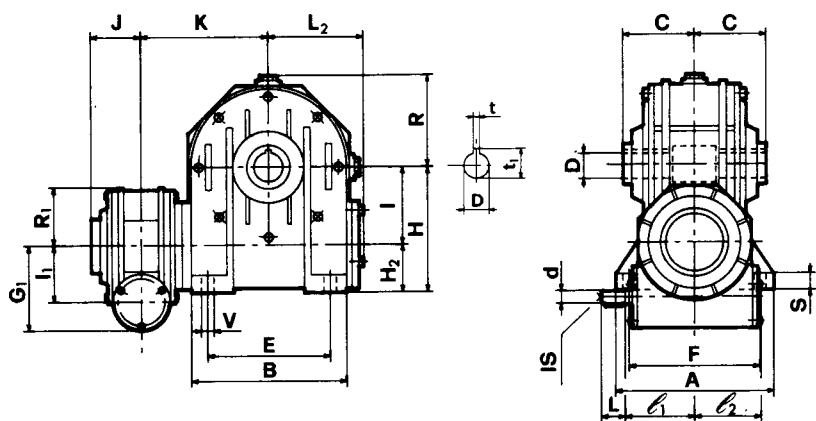
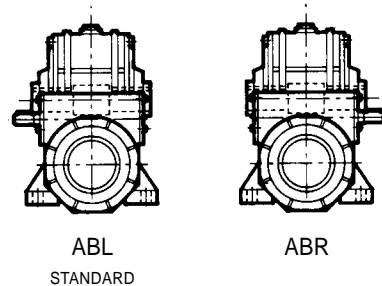
R

(STANDARD)

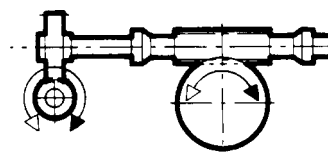
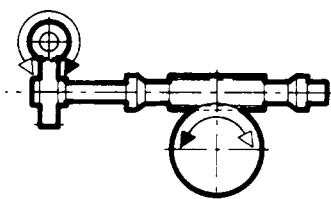
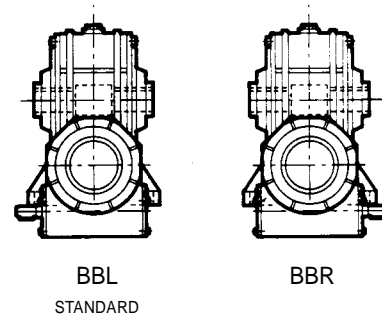


CI...A - I...B

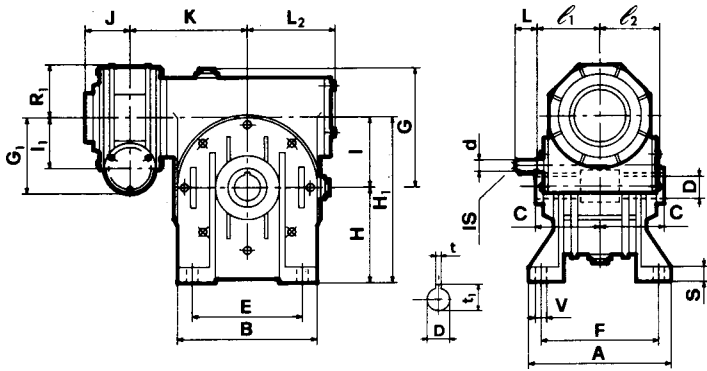
ESECUZIONE / EXECUTION / BAUFORM



CI...B - I...B

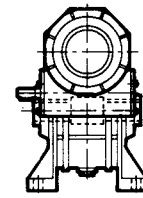


	A	B	E	F	S	V	d j6	G	G1	H	H1	H2	I	I1	Is	L	e1	L2	e2	R	R1	J	K	C	D H7	t	t1
CI 50 I 80	181	180	140	147	13	11	14	134	83	142	222	62	80	50	M5	30	73	105	69	95	65	49	165,5	70	35	10	38,3
CI 50 I 90	198	210	160	164	15	13	14	147	83	150	240	60	90	50	M5	30	73	124	69	111	65	49	180	75	38	10	41,3
CI 70 I 110	190	250	200	160	18	13	19	170	113	172	282	62	110	70	M8	40	94,5	144	92	141	90	60,5	212	77,5	42	12	45,3
CI 70 I 130	225	280	240	190	18	15	19	194	113	200	330	70	130	70	M8	40	94,5	160	92	155	90	60,5	235,5	95	48	14	51,8
CI 90 I 150	260	334	280	220	20	19	24	225	147	230	380	80	150	90	M8	50	126	190	124	182	121	75	319,5	110	55	16	60,5
CI 90 I 175	280	358	310	240	30	19	24	258	147	260	435	85	175	90	M8	50	126	204	124	203	121	75	340,5	115	60	18	64,4

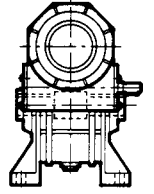


CI...B - I...A

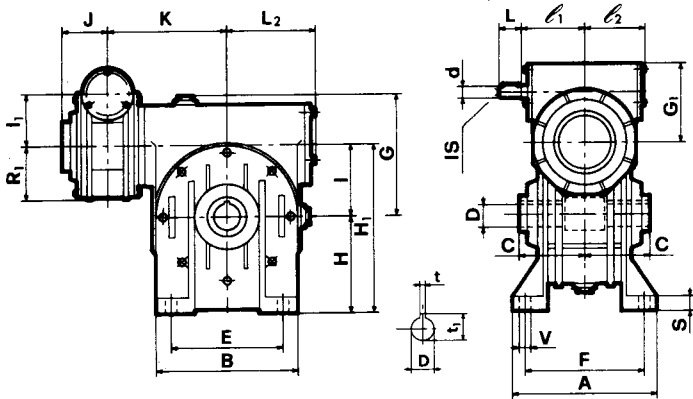
ESECUZIONE / EXECUTION / BAUFORM



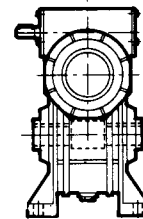
BAL
STANDARD



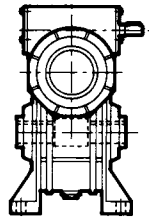
BAR



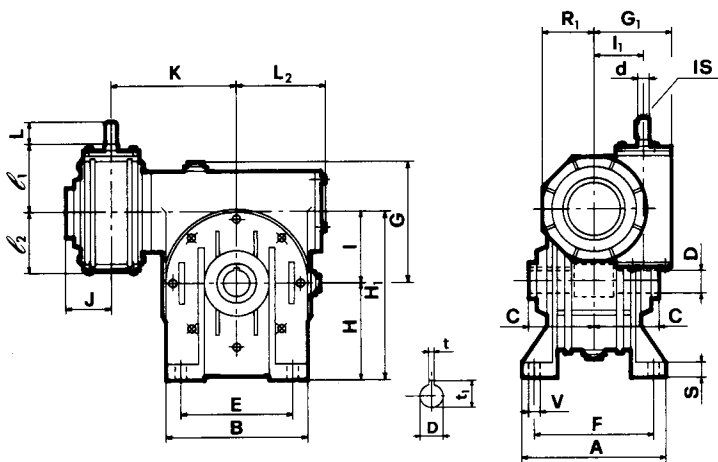
CI...A - I...A



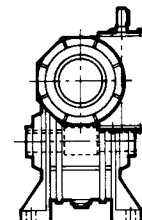
AAL
STANDARD



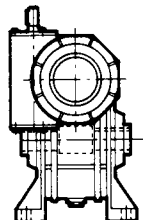
AAR



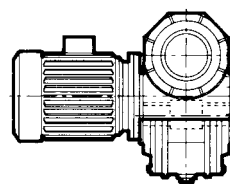
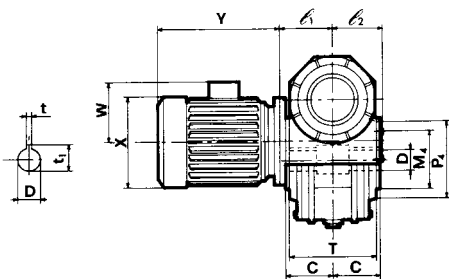
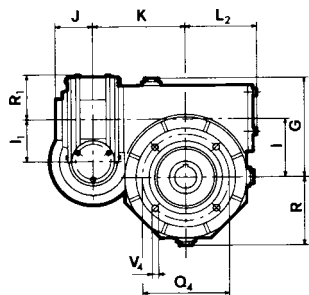
CI...V - I...A



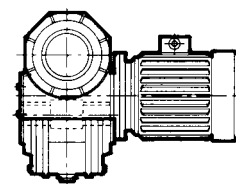
VAR
STANDARD



VAL

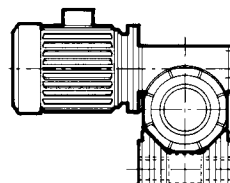
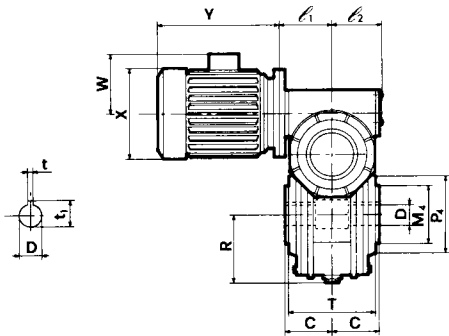
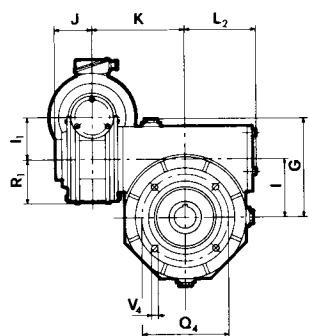


BPL
STANDARD

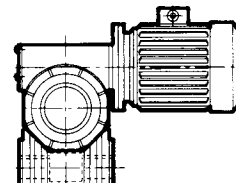


BPR

CMI...B - I...FP

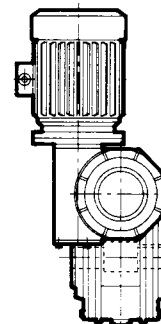
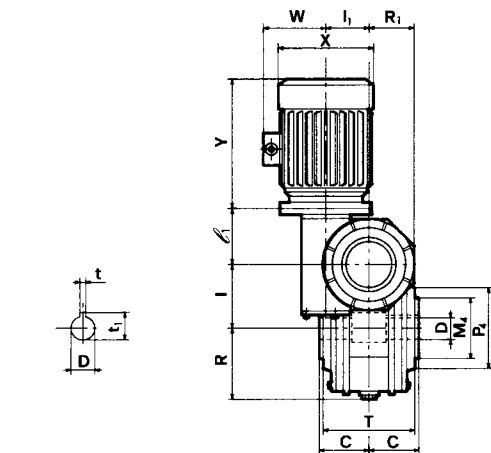
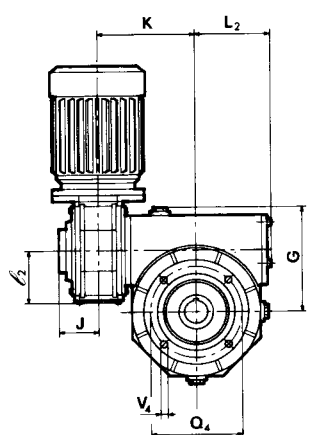


APL
STANDARD

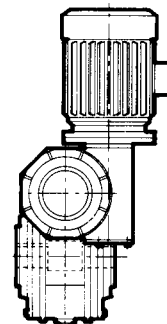


APR

CMI...A - I...FP



VPL
STANDARD



VPR

CMI...V - I...FP

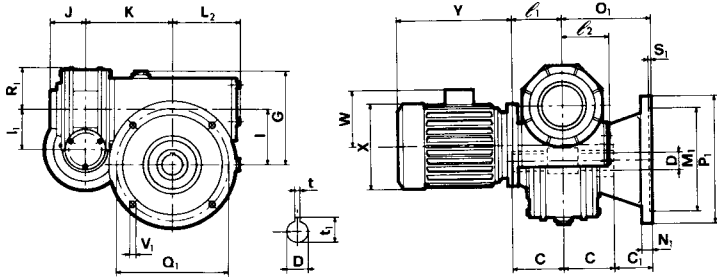
	C ₁	M ₁ G6	M ₄ G6	N ₁	O ₁	P ₁	P ₄	Q ₁	Q ₄	S ₁	V ₁	V ₄	G	l	l ₁	e ₁	L ₂	e ₂	R	R ₁	T	J	K	C	D H7	t	t ₁
CMI 50 I 80	50	130	110	13	120	200	145	165	130	5	11,5	M10	134	80	50	85	105	69	95	65	133	49	165,5	70	35	10	38,3
CMI 50 I 90	52	180	110	14	127	250	160	215	130	5	14	M10	147	90	50	85	124	69	111	65	143	49	180	75	38	10	41,3
CMI 70 I 110	72,5	180	130	18	150	250	200	215	165	5	15	M12	170	110	70	115	144	92	141	90	148	60,5	212	77,5	42	12	45,3
CMI 70 I 130	55	230	180	18	150	300	240	265	215	5	15	M12	194	130	70	115	160	92	155	90	172	60,5	235,5	95	48	14	51,8
CMI 90 I 150	65	250	180	20	175	350	250	300	215	6	17	M14	225	150	90	150	190	124	182	121	204	75	319,5	110	55	16	60,3
CMI 90 I 175	95	300	230	22	210	400	300	350	265	6	18	M16	258	175	90	150	204	124	203	121	222	75	340,5	115	60	18	64,6

NOTA: P₅, X, Y, W - vedi tabelle motori in B5.

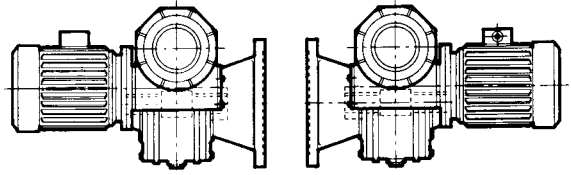
NOTE: P₅, X, Y, W - see motors table B5.

HINWEIS: P₅, X, Y, W - siehe Motorentabellen in B5.

ESECUZIONE / EXECUTION / BAUFORM

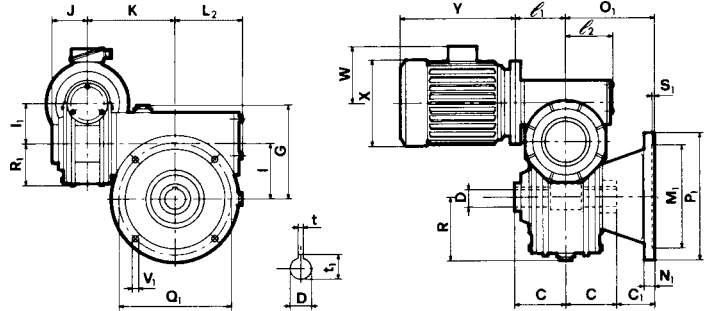


CMI...B - I...F

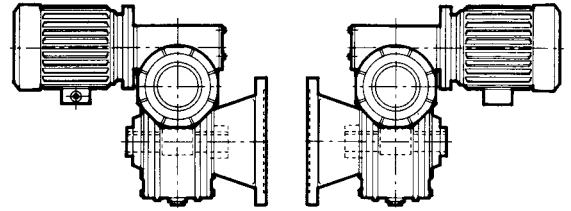


BFL
STANDARD

BFR

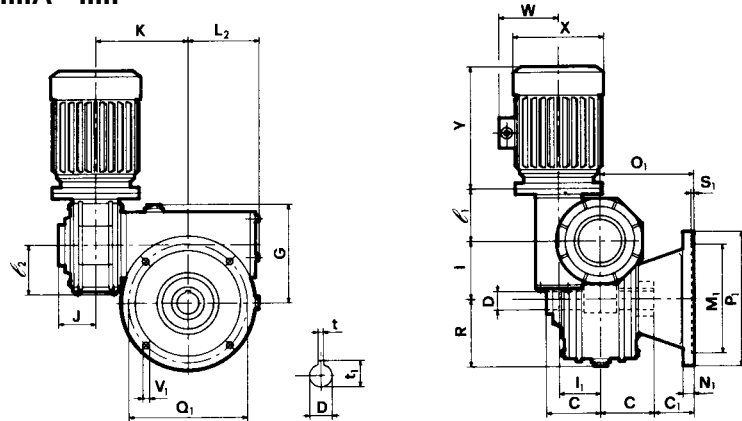


CMI...A - I...F

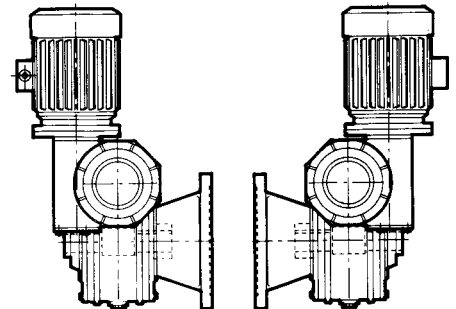


AFL
STANDARD

AFR

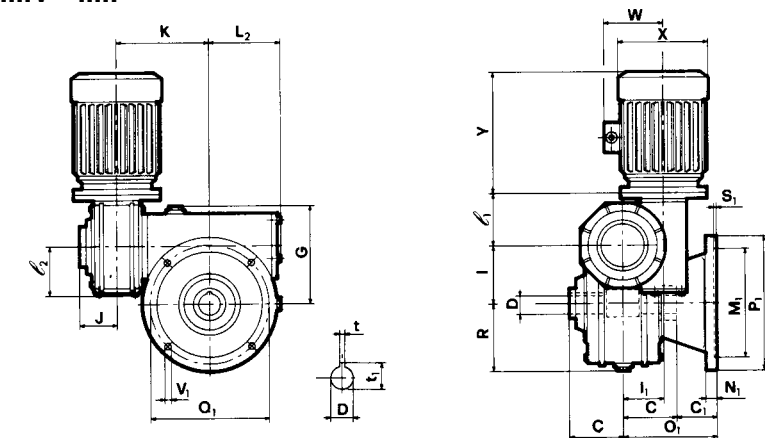


CMI...V - I...F

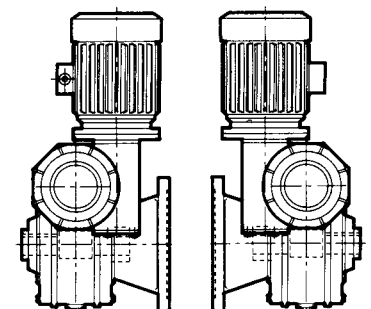


VFL
STANDARD

VFR

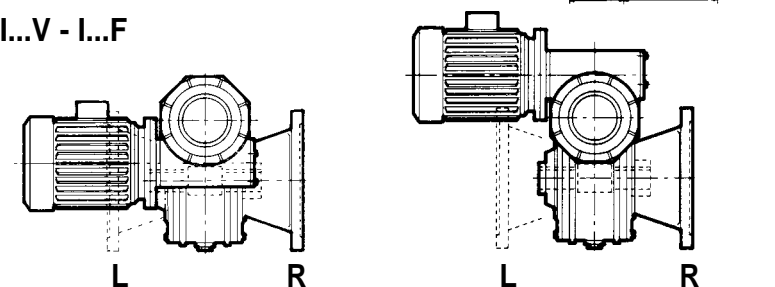


CMI...V - I...F



VFRR
STANDARD

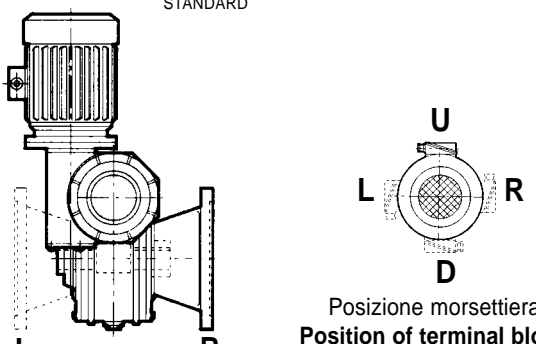
VFLL



Posizione flangia (STANDARD)

Flange position

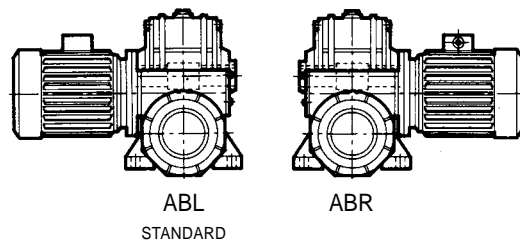
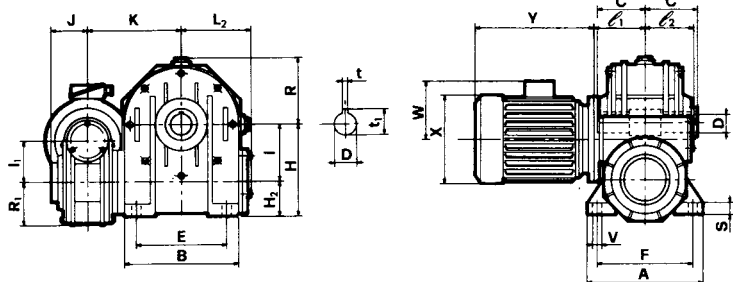
Lage des Abtriebs-flanschs



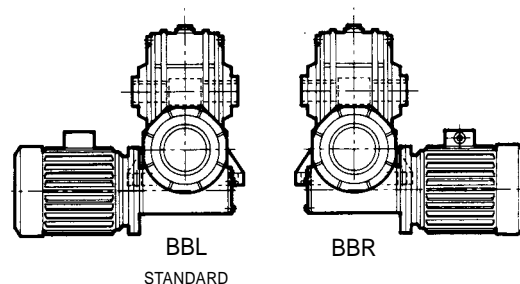
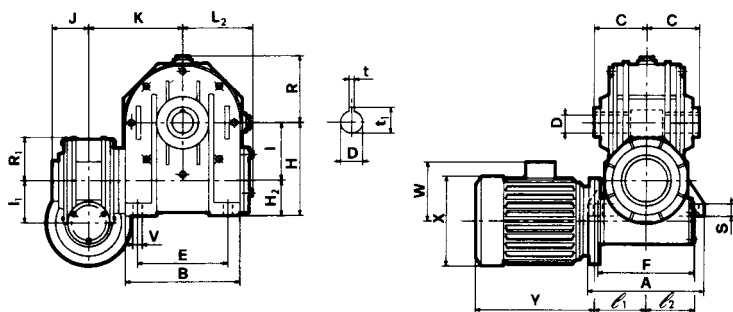
(STANDARD)

Posizione morsetti
Position of terminal block
Klemmbrett

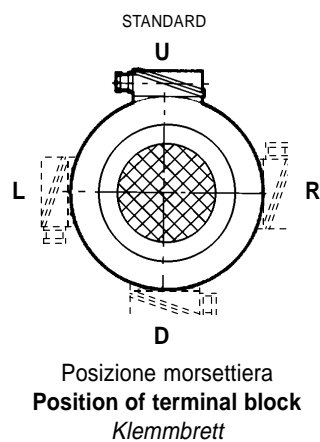
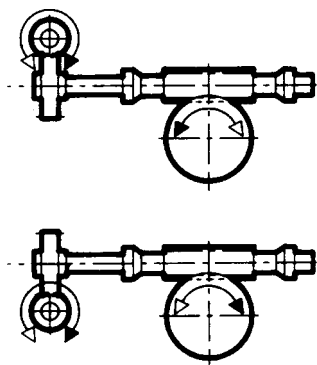
ESECUZIONE / EXECUTION / BAUFORM



CMI...A - I...B



CMI...B - I...B

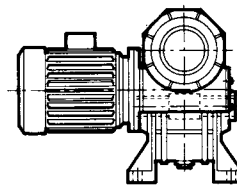
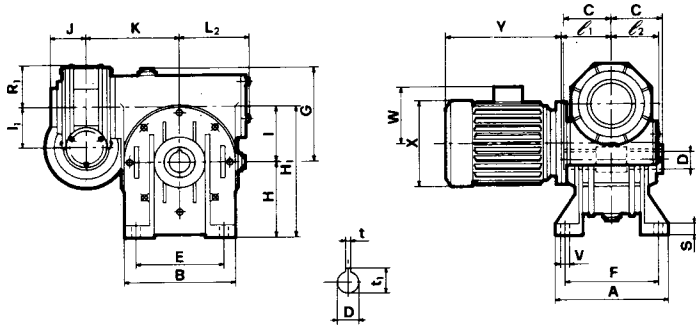


	A	B	E	F	S	V	G	G ₁	H	H ₁	H ₂	I	I ₁	e ₂	L ₂	e ₁	R	R ₁	J	K	C	D H7	t	t ₁
CMI 50 I 80	181	180	140	147	13	11	134	83	142	222	62	80	50	85	105	69	95	65	49	165,5	70	35	10	38,3
CMI 50 I 90	198	210	160	164	15	13	147	83	150	240	60	90	50	85	124	69	111	65	49	180	75	38	10	41,3
CMI 70 I 110	190	250	200	160	18	13	170	113	172	282	62	110	70	115	144	92	141	90	60,5	212	77,5	42	12	45,3
CMI 70 I 130	225	280	240	190	18	15	194	113	200	330	70	130	70	115	160	92	155	90	60,5	235,5	95	48	14	51,8
CMI 90 I 150	260	334	280	220	20	19	225	147	230	380	80	150	90	150	190	124	182	121	75	319,5	110	55	16	60,5
CMI 90 I 175	280	358	310	240	30	19	258	147	260	435	85	175	90	150	204	124	203	121	75	340,5	115	60	18	64,4

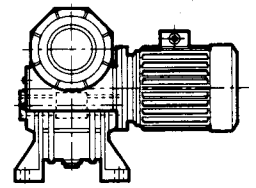
NOTA: P₅, X, Y, W - vedi tabelle motori in B5.

NOTE: P₅, X, Y, W - see motors table B5.

HINWEIS: P₅, X, Y, W - siehe Motorentabellen in B5.

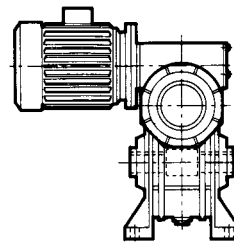
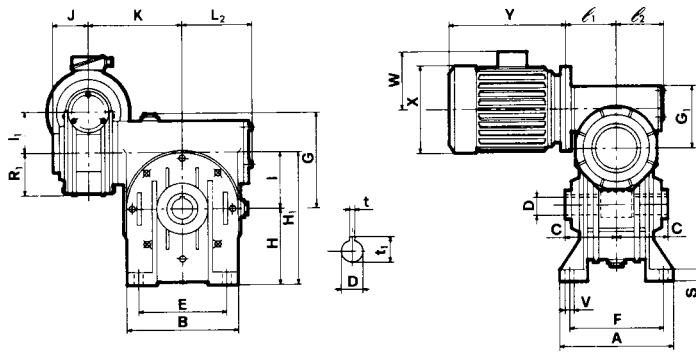


BAL
STANDARD

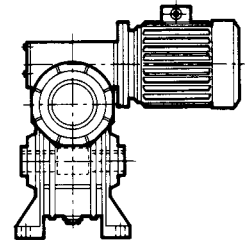


BAR

CMI...B - I...A

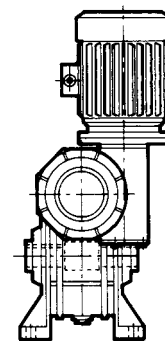
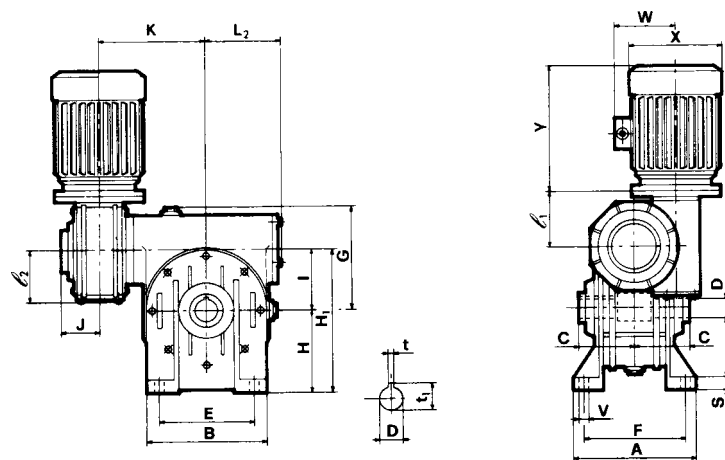


AAL
STANDARD

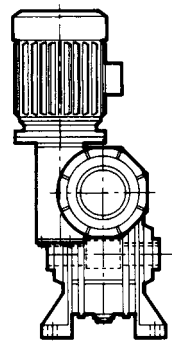


AAR

CMI...A - I...A



VAR
STANDARD



VAL

CMI...V - I...A