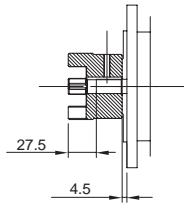
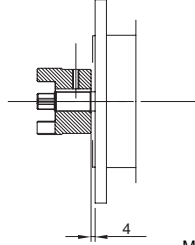


MBHGC 63-80

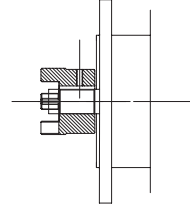
MOTORE GRANDEZZA 71
SIZE MOTOR 71
MOTOR GRÖSSE 71



MOTORE GRANDEZZA 80
SIZE MOTOR 80
MOTOR GRÖSSE 80

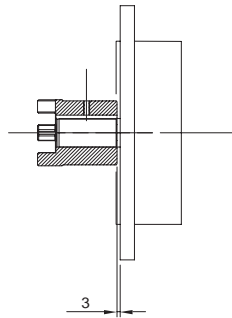


MOTORE GRANDEZZA 90
SIZE MOTOR 90
MOTOR GRÖSSE 90

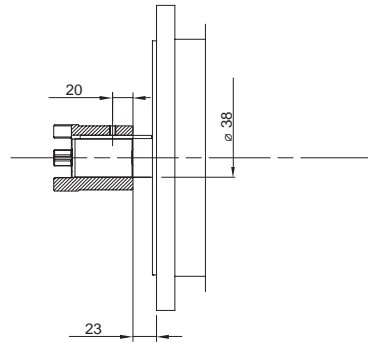


Per motore grandezza 90: monta-
re il giunto fino a battuta
**For size motor 90: fit coupling up
to reaching the shoulder**
Für motor grösse 90: Einstellen
die kupplung bis zur ende

MOTORE GRANDEZZA 100/112
SIZE MOTOR 100/112
MOTOR GRÖSSE 100/112



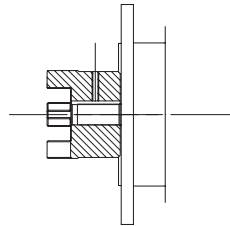
MOTORE GRANDEZZA 132
SIZE MOTOR 132
MOTOR GRÖSSE 132



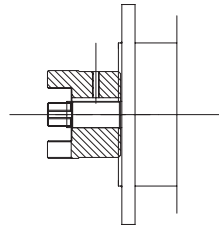
MBHGC 100-125

Montare il giunto fino a battuta
**Fit coupling up to reaching the
shoulder**
Einstellen die kupplung bis zur ende

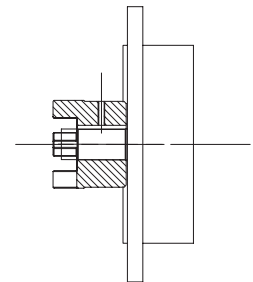
MOTORE GRANDEZZA 80
SIZE MOTOR 80
MOTOR GRÖSSE 80



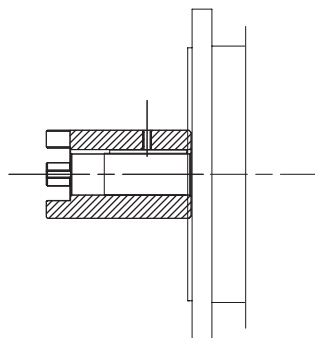
MOTORE GRANDEZZA 90
SIZE MOTOR 90
MOTOR GRÖSSE 90



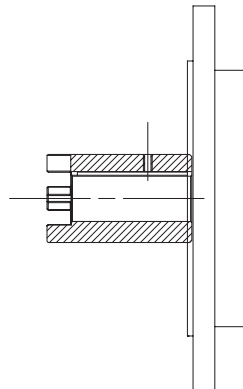
MOTORE GRANDEZZA 100/112
SIZE MOTOR 100/112
MOTOR GRÖSSE 100/112



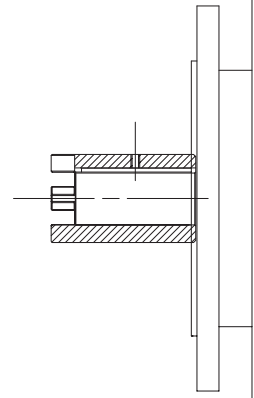
MOTORE GRANDEZZA 132
SIZE MOTOR 132
MOTOR GRÖSSE 132



MOTORE GRANDEZZA 160
SIZE MOTOR 160
MOTOR GRÖSSE 160



MOTORE GRANDEZZA 180
SIZE MOTOR 180
MOTOR GRÖSSE 180



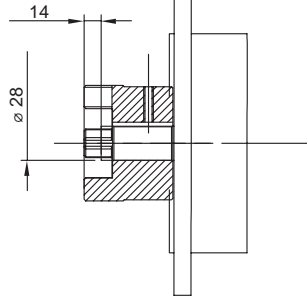
Montare il giunto fino a battuta
**Fit coupling up to reaching the
shoulder**
Einstellen die kupplung bis zur
ende

MBHGC 140-160

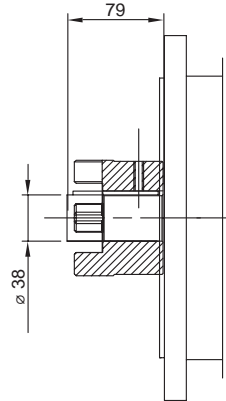
MBHGC 180-200

Montare il giunto fino a battuta
Fit coupling up to reaching the shoulder
Einstellen die kupplung bis zur ende

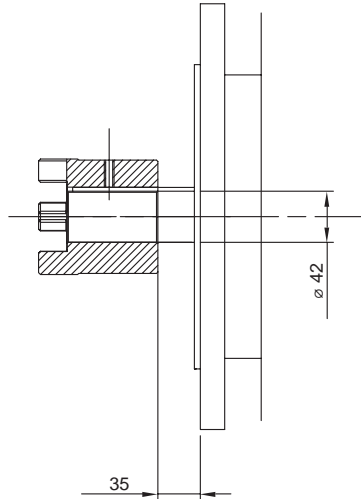
MOTORE GRANDEZZA 100/112
SIZE MOTOR 100/112
MOTOR GRÖSSE 100/112



MOTORE GRANDEZZA 132
SIZE MOTOR 132
MOTOR GRÖSSE 132



MOTORE GRANDEZZA 160
SIZE MOTOR 160
MOTOR GRÖSSE 160



MOTORE GRANDEZZA 180
SIZE MOTOR 180
MOTOR GRÖSSE 180

