
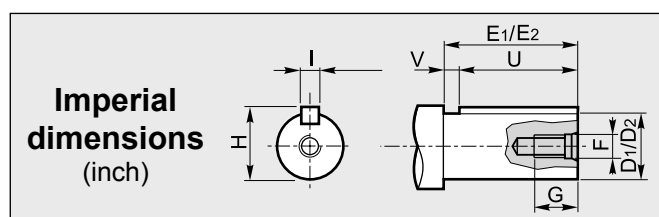
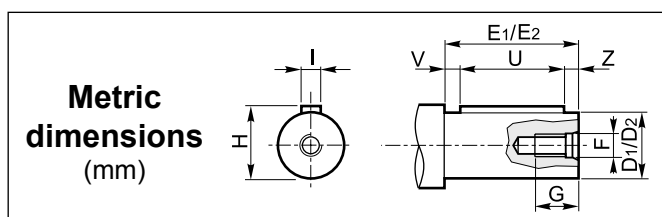


DATI TECNICI / TECHNICAL DATA / TECHNISCHE DATEN
 CARACTÉRISTIQUES TECHNIQUES / DATOS TÉCNICOS / CARACTERÍSTICAS TÉCNICAS

CV RCV	i	n ₁ = 2800 min ⁻¹			n ₁ = 1400 min ⁻¹			n ₁ = 900 min ⁻¹					
		n ₂ min ⁻¹	Mn ₂ Nm	P ₁ kW	n ₂ min ⁻¹	Mn ₂ Nm	P ₁ kW	n ₂ min ⁻¹	Mn ₂ Nm	P ₁ kW	IEC B5	IEC B14	NEMA
141	1.29	2171	13	3.0	1085	15	1.7	698	17	1.3	63-71-80	63-71-80	56
	2.33	1202	21	2.7	601	24	1.5	386	27	1.1	63-71-80	63-71-80	56
	2.79	1004	23	2.5	502	27	1.4	323	30	1.03	63-71-80	63-71-80	56
	3.40	824	23	2.0	412	27	1.2	265	30	0.85	63-71-80	63-71-80	56
	4.24	660	24	1.7	330	28	0.99	212	33	0.75	63-71-80	63-71-80	56
	4.79	585	25	1.6	292	29	0.91	188	32	0.64	63-71-80	63-71-80	56
	5.47	512	25	1.4	256	29	0.79	165	34	0.60	63-71-80	63-71-80	56
	7.46	375	25	1.0	188	30	0.60	121	35	0.45	63-71-80	63-71-80	56

DIMENSIONI / DIMENSIONS / ABMESSUNGEN / DIMENSIONS / DIMENSIONES / DIMENSÕES



1 **Albero entrata / Input shaft / Antriebswelle**
Arbre d'entrée / Eje de entrada / Eixo de entrada

D ₁	E ₁	F	G	H	I	U	V	Z
16	40	M6	15	18	5	25	5	5

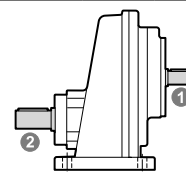
2 **Albero uscita / Output shaft / Abtriebswelle**
Arbre de sortie / Eje de salida / Eixo de saída

D ₂	E	F	G	H	I	U	V	Z
14	30	M5	12	16	5	20	5	5
16	40	M6	16	18	5	30	5	5
19	40	M6	15	21.5	6	30	5	5
20	40	M8	19	22.5	6	30	5	5

2 **Albero uscita / Output shaft / Abtriebswelle**
Arbre de sortie / Eje de salida / Eixo de saída

D ₂	E	F	G	H	I	U	V
15.88 (0.625)	40 (1.575)	1/4-20	16 (0.630)	17.89 (0.704)	4.76 (0.188)	25.40 (1.000)	14.60 (0.575)

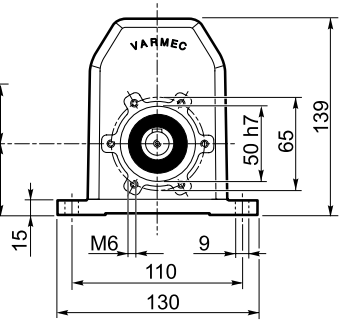
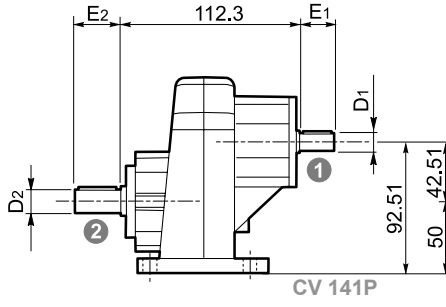
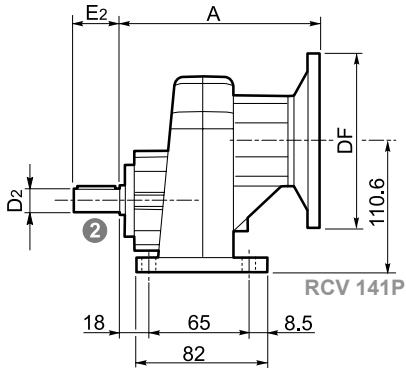
(Inch)



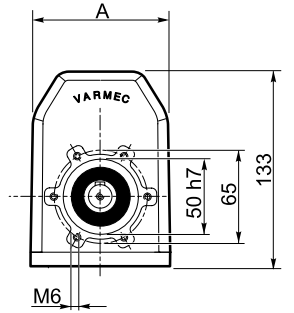
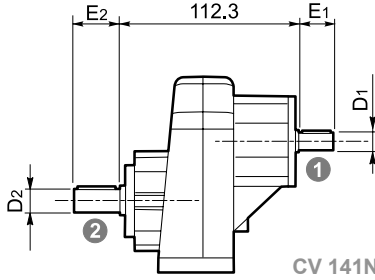
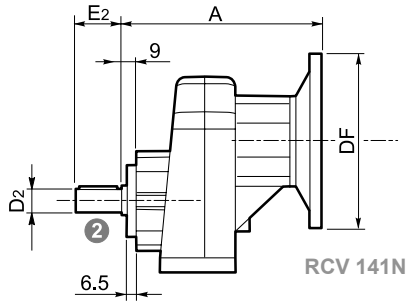
A richiesta / On request / Auf Anfrage / Sur demande / Bajo demanda / Sob consulta



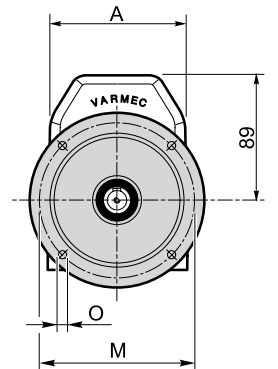
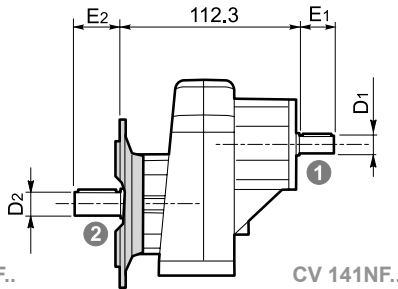
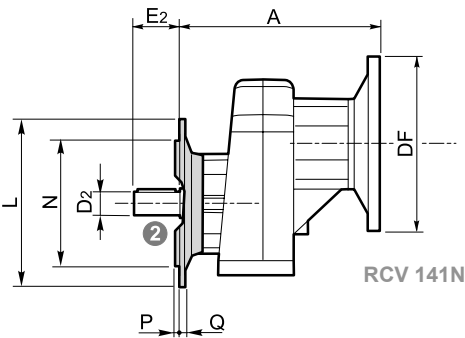
P



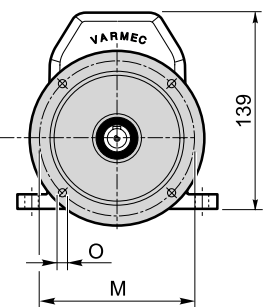
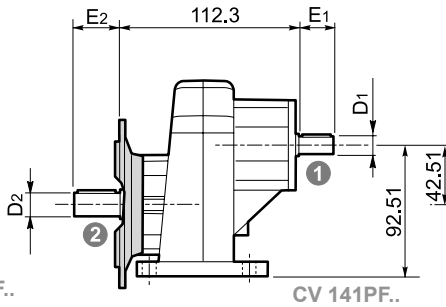
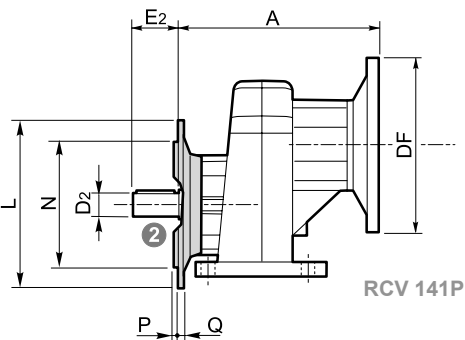
N



NF..



PF..



IEC	DF		A	NEMA	DF	A
	(B5)	(B14)				
63	140	90	115.5	56	165.1	134.5
71	160	105				
80	200	120	125.5			

	L	M	N	O	P	Q
NF120 - PF120	120	100	80	9	3	9
NF140 - PF140	140	115	95	9.5	3	9
NF160 - PF160	160	130	110	9.5	3.5	9