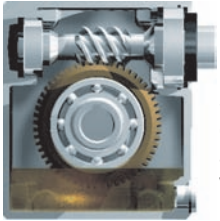


# Stainless Steel Gears 130 ÷ 185

## STANDARD FEATURES



Special housing designed to keep adequate lubrication with low Oil q.ty to avoid internal pressures.



Full Stainless Steel Housing.



Output seals (FPM-fkm) with external dust protection lips.

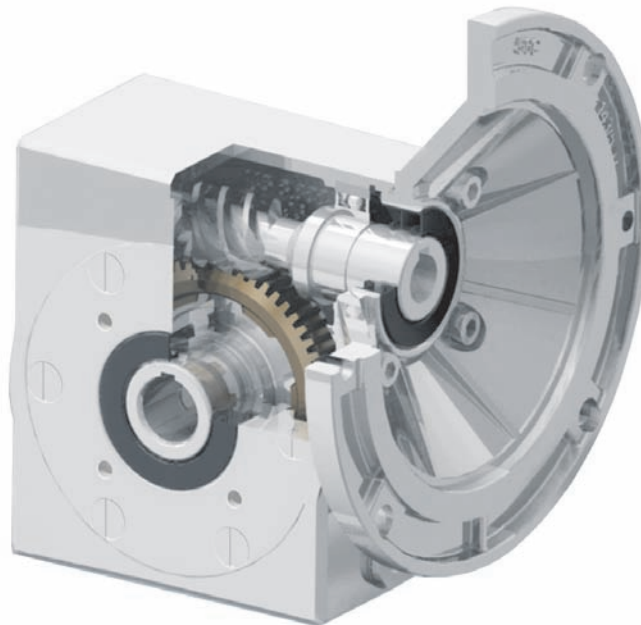


Stainless Steel Hollow shaft.

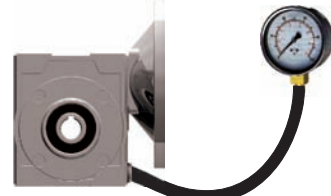
O-rings on all closing covers.



Life lubricated fully synthetic oil

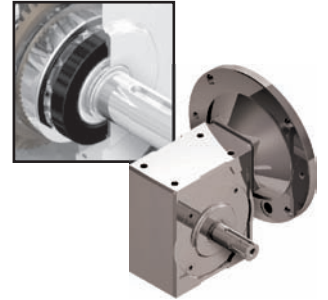


Optional interchangeable right or left hand output shafts available.



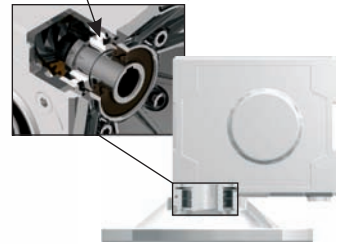
100 % Factory pressure leak test.

## OPTIONS



Protective seals cup to stand high pressure cleaning for hollow or extended shaft version.

Second Bearing



Standard second bearing on motor flange side and two oil seals with vertical motor position.

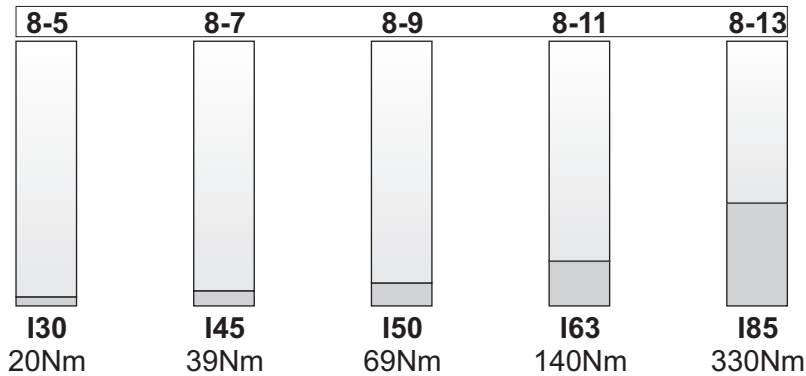
TORQUE ARM



On page / A pagina / Auf Seite / En la página



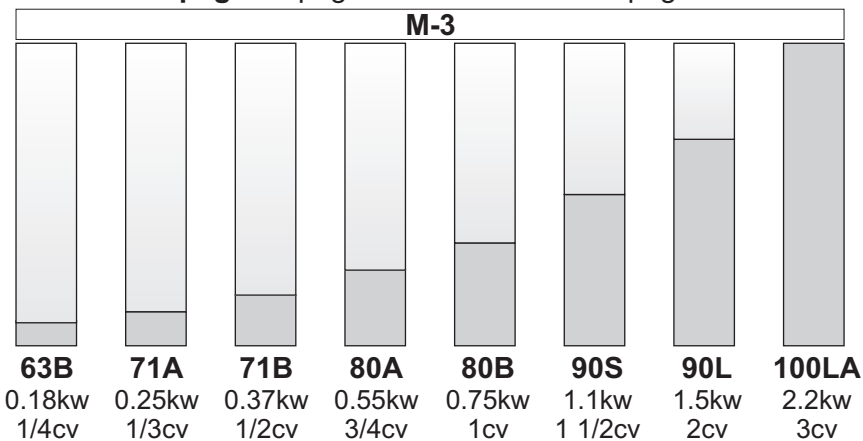
Types / Tipi /  
Arten / Tipos →



On page / A pagina / Auf Seite / En la página



Types / Tipi /  
Arten / Tipos →



For : / Per : / Für : / Para :

**Selection guide - fs**  
Guida alla selezione

**Mounting pos. - Lubrication**  
Pos. di montaggio - lubrificazione

**2 - 6 poles selection**  
Selezione 2 - 6 poli

**Radial - axial loads**  
Carichi radiali e assiali

**Reversibility**  
Reversibilità

**Thermal limit**  
Limite termico

**Atex certification**  
Certificazione Atex

**Accessories**  
Accessori

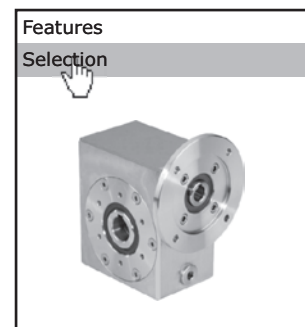
**Download 3D drawings**  
Download disegni 3D

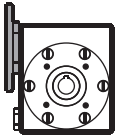


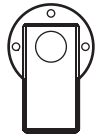
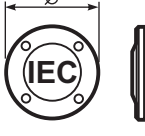
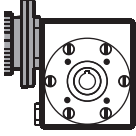
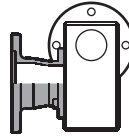
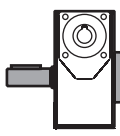
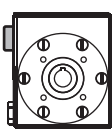
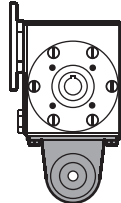
**Interchangeability**  
Intercambiabilità

**Installation and maintenance**  
Installazione, uso e manutenzione

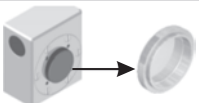
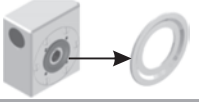
**Spare parts list**  
Liste parti di ricambio

Use our web database to  
get detailed informations,  
always updated on  
each type/size.

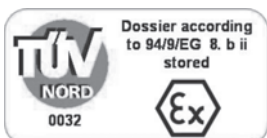


| Type - Tipo<br>Typ - Tipo   | Size - Grandezza<br>Grösse - Tamaño                                | Mounting - Montaggio<br>Montage<br>Tipo de montaje   | Ratio - Rapporto<br>Untersetzung<br>Relación   | Hub - Mozzo corona<br>Hohlwelle<br>Nucleo corona  | Output shaft<br>Albero lento<br>Abtriebswelle<br>Eje solida                                     | Motor size<br>Grandezza motore<br>Motor Grösse<br>Tamaño motor   |            |                            |                            |                            |            |                            |                             |                            |            |                            |                             |                             |  |                            |  |  |            |                             |                             |                             |  |                            |                                |  |            |                            |                            |                                  |  |                            |                                |                                 |
|---|--|--|--|---|---|--|------------|----------------------------|----------------------------|----------------------------|------------|----------------------------|-----------------------------|----------------------------|------------|----------------------------|-----------------------------|-----------------------------|--|----------------------------|--|--|------------|-----------------------------|-----------------------------|-----------------------------|--|----------------------------|--------------------------------|--|------------|----------------------------|----------------------------|----------------------------------|--|----------------------------|--------------------------------|---------------------------------|
| <b>P</b>  | <b>I45</b>   | <b>UN</b>  | <b>10</b>  | <b>I</b>  | <b>S</b>  | <b>Q</b>   |            |                            |                            |                            |            |                            |                             |                            |            |                            |                             |                             |  |                            |  |  |            |                             |                             |                             |  |                            |                                |  |            |                            |                            |                                  |  |                            |                                |                                 |
| <br><b>P</b> | <b>I30</b><br><b>I45</b><br><b>I50</b><br><b>I63</b><br><b>I85</b> | <br><b>UN</b>                                       | See technical data table<br><br>Vedi tabelle dati tecnici.<br><br>Ver tabla datos técnicos | <br><b>I</b> | <br><b>Ø</b> |   |            |                            |                            |                            |            |                            |                             |                            |            |                            |                             |                             |  |                            |  |  |            |                             |                             |                             |  |                            |                                |  |            |                            |                            |                                  |  |                            |                                |                                 |
| <br><b>M</b>  |  | <br><b>FL</b>                                       |  | STANDARD<br>I30 ⇨ ø14<br>I45 ⇨ ø18<br>I50 ⇨ ø25<br>I63 ⇨ ø25<br>I85 ⇨ ø35                     | <br><b>S</b> |  |            |                            |                            |                            |            |                            |                             |                            |            |                            |                             |                             |  |                            |  |  |            |                             |                             |                             |  |                            |                                |  |            |                            |                            |                                  |  |                            |                                |                                 |
| <br><b>B</b> |  | <br><b>BR</b><br>Full stainless steel<br>Torque arm |  | <b>Z</b><br>INCH<br>I45 ⇨ ø0.750"<br>I50 ⇨ ø1.000"<br>I63 ⇨ ø1.125"<br>I85 ⇨ ø1.500"          |   |  |            |                            |                            |                            |            |                            |                             |                            |            |                            |                             |                             |  |                            |  |  |            |                             |                             |                             |  |                            |                                |  |            |                            |                            |                                  |  |                            |                                |                                 |
|   |  |  |  |   |   | <table border="1"> <tr> <td><b>I30</b></td> <td><b>O</b><br/>56B14<br/>(ø80)</td> <td><b>P</b><br/>63B14<br/>(ø90)</td> <td><b>W</b><br/>56C<br/>(ø6.5")</td> </tr> <tr> <td><b>I45</b></td> <td><b>P</b><br/>63B14<br/>(ø90)</td> <td><b>Q</b><br/>71B14<br/>(ø105)</td> <td><b>W</b><br/>56C<br/>(ø6.5")</td> </tr> <tr> <td><b>I50</b></td> <td><b>P</b><br/>63B14<br/>(ø90)</td> <td><b>Q</b><br/>71B14<br/>(ø105)</td> <td><b>R</b><br/>80B14<br/>(ø120)</td> </tr> <tr> <td></td> <td><b>W</b><br/>56C<br/>(ø6.5")</td> <td></td> <td></td> </tr> <tr> <td><b>I63</b></td> <td><b>Q</b><br/>71B14<br/>(ø105)</td> <td><b>R</b><br/>80B14<br/>(ø120)</td> <td><b>T</b><br/>90B14<br/>(ø140)</td> </tr> <tr> <td></td> <td><b>W</b><br/>56C<br/>(ø6.5")</td> <td><b>X</b><br/>143/5TC<br/>(ø6.5")</td> <td></td> </tr> <tr> <td><b>I85</b></td> <td><b>D</b><br/>80B5<br/>(ø200)</td> <td><b>E</b><br/>90B5<br/>(ø200)</td> <td><b>U</b><br/>100-112B14<br/>(ø160)</td> </tr> <tr> <td></td> <td><b>W</b><br/>56C<br/>(ø6.5")</td> <td><b>X</b><br/>143/5TC<br/>(ø6.5")</td> <td><b>Y</b><br/>182/4TC<br/>(ø8.88")</td> </tr> </table> | <b>I30</b> | <b>O</b><br>56B14<br>(ø80) | <b>P</b><br>63B14<br>(ø90) | <b>W</b><br>56C<br>(ø6.5") | <b>I45</b> | <b>P</b><br>63B14<br>(ø90) | <b>Q</b><br>71B14<br>(ø105) | <b>W</b><br>56C<br>(ø6.5") | <b>I50</b> | <b>P</b><br>63B14<br>(ø90) | <b>Q</b><br>71B14<br>(ø105) | <b>R</b><br>80B14<br>(ø120) |  | <b>W</b><br>56C<br>(ø6.5") |  |  | <b>I63</b> | <b>Q</b><br>71B14<br>(ø105) | <b>R</b><br>80B14<br>(ø120) | <b>T</b><br>90B14<br>(ø140) |  | <b>W</b><br>56C<br>(ø6.5") | <b>X</b><br>143/5TC<br>(ø6.5") |  | <b>I85</b> | <b>D</b><br>80B5<br>(ø200) | <b>E</b><br>90B5<br>(ø200) | <b>U</b><br>100-112B14<br>(ø160) |  | <b>W</b><br>56C<br>(ø6.5") | <b>X</b><br>143/5TC<br>(ø6.5") | <b>Y</b><br>182/4TC<br>(ø8.88") |
| <b>I30</b>  | <b>O</b><br>56B14<br>(ø80)   | <b>P</b><br>63B14<br>(ø90)   | <b>W</b><br>56C<br>(ø6.5")   |   |   |  |            |                            |                            |                            |            |                            |                             |                            |            |                            |                             |                             |  |                            |  |  |            |                             |                             |                             |  |                            |                                |  |            |                            |                            |                                  |  |                            |                                |                                 |
| <b>I45</b>  | <b>P</b><br>63B14<br>(ø90)   | <b>Q</b><br>71B14<br>(ø105)  | <b>W</b><br>56C<br>(ø6.5")   |   |   |  |            |                            |                            |                            |            |                            |                             |                            |            |                            |                             |                             |  |                            |  |  |            |                             |                             |                             |  |                            |                                |  |            |                            |                            |                                  |  |                            |                                |                                 |
| <b>I50</b>  | <b>P</b><br>63B14<br>(ø90)   | <b>Q</b><br>71B14<br>(ø105)  | <b>R</b><br>80B14<br>(ø120)  |   |   |  |            |                            |                            |                            |            |                            |                             |                            |            |                            |                             |                             |  |                            |  |  |            |                             |                             |                             |  |                            |                                |  |            |                            |                            |                                  |  |                            |                                |                                 |
|   | <b>W</b><br>56C<br>(ø6.5")   |  |  |   |   |  |            |                            |                            |                            |            |                            |                             |                            |            |                            |                             |                             |  |                            |  |  |            |                             |                             |                             |  |                            |                                |  |            |                            |                            |                                  |  |                            |                                |                                 |
| <b>I63</b>  | <b>Q</b><br>71B14<br>(ø105)  | <b>R</b><br>80B14<br>(ø120)  | <b>T</b><br>90B14<br>(ø140)  |   |   |  |            |                            |                            |                            |            |                            |                             |                            |            |                            |                             |                             |  |                            |  |  |            |                             |                             |                             |  |                            |                                |  |            |                            |                            |                                  |  |                            |                                |                                 |
|   | <b>W</b><br>56C<br>(ø6.5")   | <b>X</b><br>143/5TC<br>(ø6.5")   |  |   |   |  |            |                            |                            |                            |            |                            |                             |                            |            |                            |                             |                             |  |                            |  |  |            |                             |                             |                             |  |                            |                                |  |            |                            |                            |                                  |  |                            |                                |                                 |
| <b>I85</b>  | <b>D</b><br>80B5<br>(ø200)   | <b>E</b><br>90B5<br>(ø200)   | <b>U</b><br>100-112B14<br>(ø160)   |   |   |  |            |                            |                            |                            |            |                            |                             |                            |            |                            |                             |                             |  |                            |  |  |            |                             |                             |                             |  |                            |                                |  |            |                            |                            |                                  |  |                            |                                |                                 |
|   | <b>W</b><br>56C<br>(ø6.5")   | <b>X</b><br>143/5TC<br>(ø6.5")   | <b>Y</b><br>182/4TC<br>(ø8.88")  |   |   |  |            |                            |                            |                            |            |                            |                             |                            |            |                            |                             |                             |  |                            |  |  |            |                             |                             |                             |  |                            |                                |  |            |                            |                            |                                  |  |                            |                                |                                 |

## On request

|          |   |   |
|----------|---|---|
| <b>A</b> | <b>Protective seals cup</b><br>CLOSE TYPE |  |
| <b>B</b> | <b>Protective seals cup</b><br>OPEN TYPE  |  |
| <b>C</b> | <b>Food lube</b>                          |   |
| <b>D</b> | <b>Nema input flanges</b>                 |   |

**M**  
without flange  
Senza flangia



A richiesta possiamo fornire i nostri prodotti secondo le normative ATEX

On request we can deliver our products according to the ATEX

Auf Anfrage können wir unsere Produkte den Richtlinien ATEX entsprechend liefern

A pedido, se pueden enviar nuestros productos de acuerdo con las normas ATEX.

REQUIRED POWER / POTENZA RICHIESTA / ERFORDERLICHE LEISTUNG / POTENCIA NECESARIA

Lifting / sollevamento / hubantriebe / elevación

$$P \text{ [KW]} = \frac{M \text{ [Kg]} \cdot g \text{ [9.81]} \cdot v \text{ [m / s]}}{1000}$$

Rotation / rotazione / drehung / rotation

$$P \text{ [KW]} = \frac{M \text{ [Nm]} \cdot n \text{ [rpm]}}{9550}$$

Linear movement / traslazione / linearbewegung / translacion

$$P \text{ [KW]} = \frac{F \text{ [N]} \cdot v \text{ [m / s]}}{1000}$$

TORQUE / COPPIA / DREHMOMENT / PAR

$$M \text{ [Nm]} = \frac{9550 \cdot P \text{ [KW]}}{n \text{ [rpm]}}$$

$$M \text{ [lb in]} = \frac{63030 \cdot P \text{ [HP]}}{n \text{ [rpm]}}$$

RADIAL LOADS / CARICHI RADIALI / RADIALE - UND AXIALLASTEN / CARGA RADIAL Y AXIAL

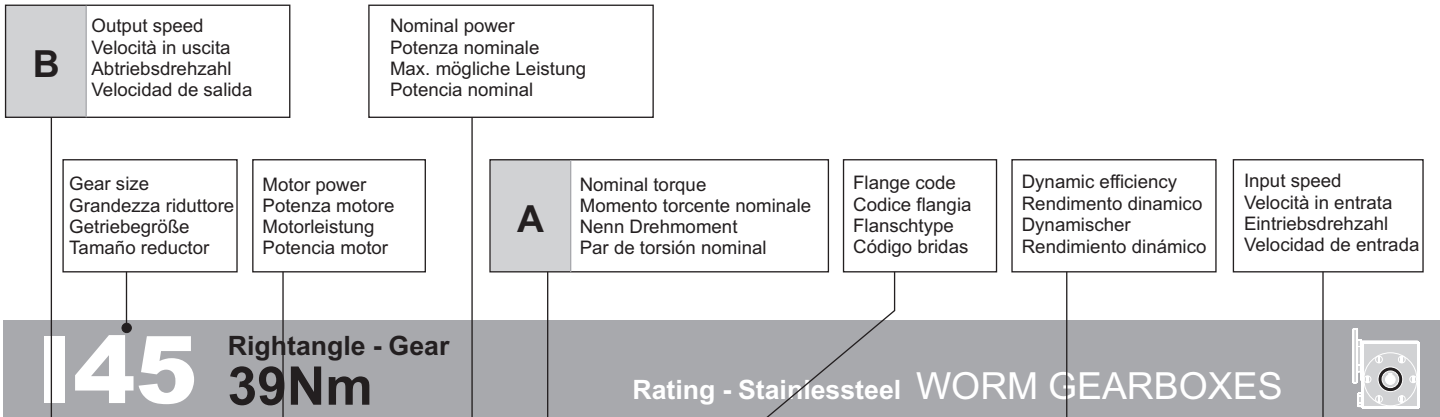
- Radial load generated by external transmissions keyed onto input and/or output shafts.
- Forza radiale generata da organi di trasmissione calettati sugli alberi di ingresso e/o uscita.
- Belastungen der Antriebs- bzw. Abtriebswellen durch von aussen eingebrachte Radiallasten.
- Cargas radiales, generada por transmisiones externas, aplicadas sobre los ejes de entrada y/o salida



|                      |  |  |
|----------------------|--|--|
|                      | $F_R \text{ [N]} = \frac{M \text{ [Nm]} \cdot 2000}{d \text{ [mm]}} \cdot f_k$   | $F_R \text{ [N]} = \frac{M \text{ [lb in]} \cdot 8.9}{d \text{ [in]}} \cdot f_k$ |
| <b>M</b>             | Output torque / Momento torcente / Abtriebsdrehmoment / Par torsion  |  |
| <b>d</b>             | Diam. of driving element / Diametro primitivo / Durchmesser der Abtriebseinheit / Diámetro primitivo   |  |
| <b>f<sub>k</sub></b> | Factor / Coefficiente di trasformazione / Faktor / Coefficiente de transmisión<br><b>1.15</b> Gearwheels / Ingranaggi / Zahnrad / Engranaje<br><b>1.25</b> Chain sprochets / Catena / Antriebskette / Cadena<br><b>1.75</b> Narrow v-belt pulley / Cinghia Trapezoidale / Keilriemen / Correa trapezoidal<br><b>2.50</b> Flat-belt pulley / Cinghia piatta / Flachzahnriem. / Correa plana |  |

- If your application requires higher radial loads, contact our technical office. Higher load may be possible.
- Nel caso la vostra applicazione richieda carichi radiali superiori consultare il nostro ufficio tecnico, valori maggiori possono essere accettati.
- Wenn Ihre Anwendung höhere Radialbelastungen erfordert, so wenden Sie sich bitte an unser technischen Büro.
- En el caso en que una aplicación exija una carga radial superior a la especificada en el catálogo, consultar a nuestra oficinas técnica.

How to select a gearbox / Come selezionare un riduttore  
Wie wählt man ein Getriebe / Cómo seleccionar un reductor



QUICK SELECTION / Selezione veloce

input speed (n<sub>i</sub>) = 1400 min<sup>-1</sup>

| Output Speed<br>$n_2$<br>[min <sup>-1</sup> ] | Ratio<br>$i$ | Motor power<br>$P_{1M}$<br>[kW] | Output torque<br>$M_{2M}$<br>[Nm] | Service factor<br>f.s. | Nominal power<br>$P_{1R}$<br>[kW] | Nominal torque<br>$M_{2R}$<br>[Nm] | Available B5 motor flanges |    | Available B14 motor flanges |     |    | Dynamic efficiency<br>RD | Tooth Module<br>Mn | Ratios code |
|---|--------------|---------------------------------|-----------------------------------|------------------------|-----------------------------------|------------------------------------|----------------------------|----|-----------------------------|-----|----|--------------------------|--------------------|-------------|
|   |              |                                 |                                   |                        |                                   |                                    | B                          | C  | O                           | P   | Q  |                          |                    |             |
|   |              |                                 |                                   |                        |                                   |                                    | 63                         | 71 | 56                          | 63  | 71 |                          |                    |             |
| 200   | 7            | 0.37                            | 14                                | 2.1                    | 0.76                              | 29                                 | B                          |    | B-C                         | B-C |    | 80                       | 2.2                | 01          |
| 140   | 10           | 0.37                            | 20                                | 1.5                    | 0.54                              | 29                                 | B                          |    | B-C                         | B-C |    | 79                       | 2.2                | 02          |
| 100   | 14           | 0.37                            | 27                                | 1.1                    | 0.39                              | 29                                 | B                          |    | B-C                         | B-C |    | 77                       | 2.4                | 03          |



| fs   |                     | Oper. hours per day<br>Ore di funz. giorn. |         |          |
|--|---------------------|--|---------|----------|
| Type of load and starts per hour<br>Tipo di carico e avviamenti per ora                                    |                     | <2 h                                       | 2 - 8 h | 8 - 16 h |
| Continuous or intermittent appl. with start / hour<br>Applicazione cont. o interm. con n.ro operazioni/ora | Uniform / Uniforme  | 0.9  | 1       | 1.25     |
|  | Moderate / Moderato | 1  | 1.25    | 1.5      |
|  | Heavy / Forte       | 1.25                                       | 1.5     | 1.75     |
| Intermittent application with start / hour<br>Applicazione intermittente con n.ro operazioni/ora           | Uniform / Uniforme  | 1.25                                       | 1.5     | 1.75     |
|  | Moderate / Moderato | 1.5  | 1.75    | 2        |
|  | Heavy / Forte       | 1.75                                       | 2       | 2.25     |

| D  | Motor flange available<br>Flange disponibili<br>Erhältliche Motorflansche<br>Bridas disponibles   |
|----|---|
| B) | Mounting with reduction ring<br>Montaggio con boccia di riduzione<br>Reduzierhülsen<br>Montaje con casquillo de reducción   |
| C) | Motor flangeholes position/terminal box position<br>Posizione fori flangia/basetta motore<br>Bohrungsposition am Motorflansch/-sockel<br>Posición agujeros brida / base motor |
| B) | Available without reduction bushes<br>Disponibile anche senza boccia<br>Auch ohne Reduzierbuchse verfügbar<br>Disponible tambien sin casquillo                                |

|   |  |  |  |  |
|---|--|--|--|--|
| A | Select required torque (according to service factor)                   | Seleziona la coppia desiderata (comprensiva del fattore di servizio)                             | Max. Drehmoment in Bezug zum Betriebsfaktor  | Seleccionar el par deseado (incluyendo el factor de servicio)                                      |
| B | Select output speed  | Seleziona la velocità in uscita  | Ausgewählte Abtriebsdrehzahl   | Seleccionar la velocidad de salida   |
| C | On the same line of selected geared motor, you can find the gear ratio | Sulla riga corrispondente alla motorizzazione prescelta si può rilevare il rapporto di riduzione | Auf der gleichen Linie wie die ausgewählte Motorleistung steht auch die Getriebeuntersetzung | En la línea correspondiente al motor preseleccionado es posible encontrar la relación de reducción |
| D | Select motor flange available (if requested)                           | Scegli la flangia disponibile (se richiesta)   | Erhältliche Motorflansche (auf Anfrage)  | Seleccionar la brida disponible (sobre pedido)   |



#### QUICK SELECTION / Selezione veloce

input speed ( $n_1$ ) = 1400 min<sup>-1</sup>

| Output Speed<br>$n_2$<br>[min <sup>-1</sup> ] | Ratio<br>$i$ | Motor power<br>$P_{1M}$<br>[kW] | Output torque<br>$M_{2M}$<br>[Nm] | Service factor<br>f.s. | Nominal power<br>$P_{1R}$<br>[kW] | Nominal torque<br>$M_{2R}$<br>[Nm] | B5 motor flanges<br>not available |   | Available<br>B14 motor flanges |   | Dynamic efficiency<br><b>RD</b> | Tooth Module<br>$M_n$ [mm] | Ratios code |
|---|--------------|---------------------------------|-----------------------------------|------------------------|-----------------------------------|------------------------------------|-----------------------------------|---|--------------------------------|---|---------------------------------|----------------------------|-------------|
|   |              |                                 |                                   |                        |                                   |                                    | -                                 | - | O                              | P |                                 |                            |             |
| 280   | <b>5</b>     | 0.18                            | 5                                 | 3.2                    | <b>0.57</b>                       | <b>16</b>                          |                                   |   | B-C                            |   | 82                              | 1.26                       | 09          |
| 200   | <b>7</b>     | 0.18                            | 7                                 | 2.3                    | <b>0.42</b>                       | <b>16</b>                          |                                   |   | B-C                            |   | 80                              | 1.44                       | 01          |
| 140   | <b>10</b>    | 0.18                            | 10                                | 1.7                    | <b>0.30</b>                       | <b>16</b>                          |                                   |   | B-C                            |   | 78                              | 1.44                       | 02          |
| 93  | <b>15</b>    | 0.18                            | 13                                | 1.3                    | <b>0.24</b>                       | <b>18</b>                          |                                   |   | B-C                            |   | 73                              | 1.44                       | 03          |
| 70  | <b>20</b>    | 0.18                            | 17                                | 1.0                    | <b>0.19</b>                       | <b>18</b>                          |                                   |   | B-C                            |   | 70                              | 1.09                       | 04          |
| 47  | <b>30</b>    | 0.12                            | 15                                | 1.3                    | <b>0.16</b>                       | <b>20</b>                          |                                   |   | B-C                            |   | 62                              | 1.44                       | 05          |
| 35  | <b>40</b>    | 0.12                            | 19                                | 1.0                    | <b>0.12</b>                       | <b>19</b>                          |                                   |   | B-C                            |   | 57                              | 1.09                       | 06          |
| 23  | <b>61</b>    | 0.09                            | 19                                | 1.0                    | <b>0.09</b>                       | <b>19</b>                          |                                   |   | B-C                            |   | 50                              | 0.72                       | 07          |
| 17.5  | <b>80</b>    | 0.09                            | 16                                | 1.0                    | <b>0.06</b>                       | <b>15</b>                          |                                   |   | B-C                            |   | 48                              | 0.56                       | 08          |

**A** Motor Flanges Available  
Flange Motore Disponibili

**B** Supplied with Reduction Bushing  
Fornito con Bussola di Riduzione

**B** Available on Request without reduction bushing  
Disponibile a Richiesta senza Bussola di Riduzione

**C** Motor Flange Holes Position  
Posizione Fori Flangia Motore

**EN** Unit I30 is supplied with synthetic oil, providing "long life" lubrication. For mounting position V5-V6 please contact us. See table 1 for lubrication and recommended quantity. In table 2 please see possible radial loads and axial loads on the gearbox. For complete documentation please visit our web site.

**I** Il riduttore tipo I30 viene fornito lubrificato a vita con olio sintetico. Per posizioni V5-V6 contattare il ns. servizio tecnico. Vedi tab.1 per oli e quantità consigliati. In tab.2 sono presenti i carichi radiali e assiali applicabili al riduttore. Per la documentazione completa consulta il nostro sito.

**D** Für die Lebensdauerschmierung ist das Getriebe der Größe I30 mit synthetischem Öl befüllt. Bei Einbaulage V5 oder V6 bitten wir um Rücksprache. In Tabelle 1 ist die Schmiermenge und das empfohlene Schmiermittel angegeben. In Tabelle 2 sind die zulässigen Radial- und Axialbelastungen des Getriebes aufgeführt. Die komplette Dokumentation, Wartungs- und Inbetriebnahmeanleitungen finden Sie unter.

**E** El reductor tamaño I30 se suministra, lubricado de por vida con aceite sintético. Para las posiciones V5 y V6 contactar con nuestro servicio técnico. Ver tabla 1, para cantidades y aceites recomendados. En la tabla 2, se encuentran las cargas radiales y axiales admitidas por el reductor. Para documentación completa, consultar nuestra Web.

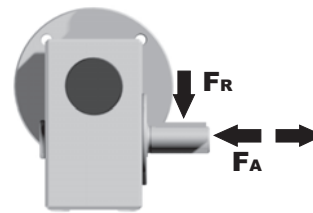
#### LUBRICATION I30 Oil Quantity 0.10 Lt.

| AGIP           | KLUBER           | SHELL         | MOBIL              |
|----------------|------------------|---------------|--------------------|
| Telium VSF 320 | Syntheso D220 EP | Tivela Oil WB | Glygoyl 30 SHC 630 |

tab. 1

#### RADIAL AND AXIAL LOADS

Output shaft  
Albero di uscita



| $n_2$<br>[min <sup>-1</sup> ] | FA<br>[N] | FR<br>[N] |
|-------------------------------|-----------|-----------|
| <b>200</b>                    | 120       | 600       |
| <b>150</b>                    | 140       | 700       |
| <b>100</b>                    | 160       | 800       |
| <b>75</b>                     | 180       | 900       |
| <b>50</b>                     | 200       | 1000      |
| <b>25</b>                     | 250       | 1250      |
| <b>15</b>                     | 280       | 1400      |

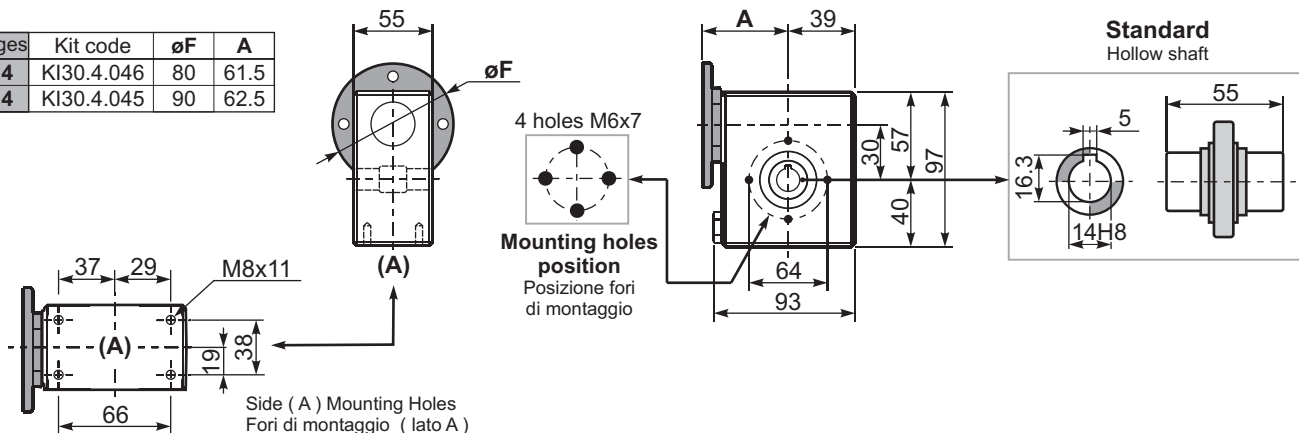
tab. 2

**SELECT THIS TYPE AND THIS SPECIFIC SIZE ON THE WEB PAGES TO GET COMPLETE TECHNICAL DATA.**  
Selezionare tipo e gandezza specifica nel sito web per la documentazione completa.

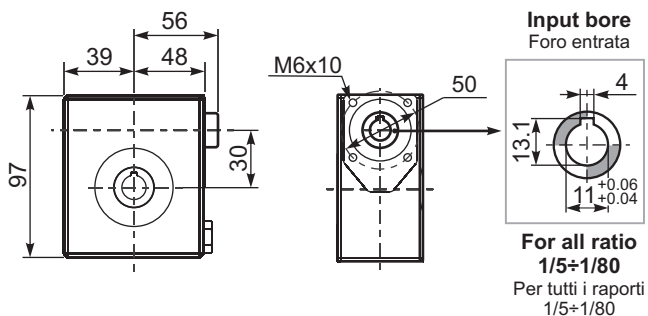
Gearbox weight peso riduttore **2.5 kg**

PI30**UN**... Basic wormbox  
Riduttore base

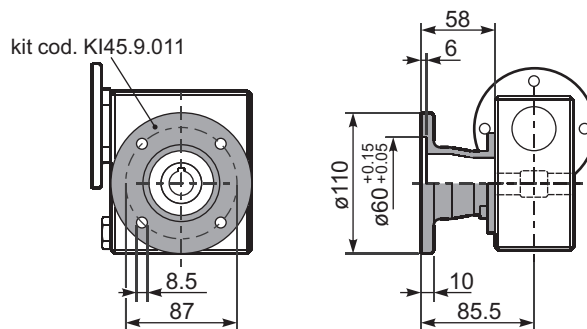
| M. flanges   | Kit code   | øF | A    |
|--------------|------------|----|------|
| <b>56B14</b> | KI30.4.046 | 80 | 61.5 |
| <b>63B14</b> | KI30.4.045 | 90 | 62.5 |



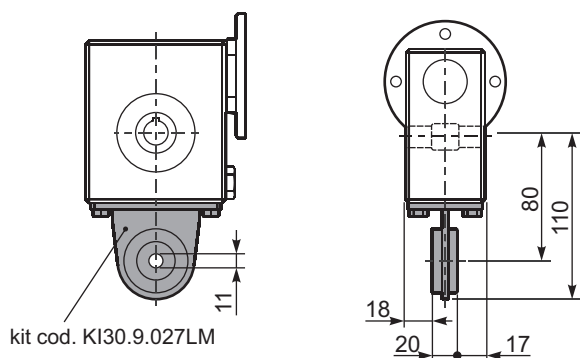
BI30UN... Modular base  
Base modulare



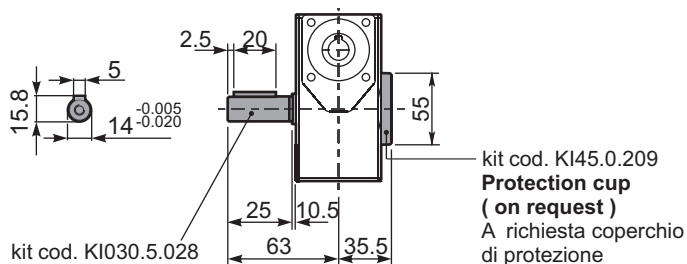
PI30**FL**... Output flange  
Flangia uscita



PI30**BR**... Reaction arm  
Braccio di reazione



PI30.....**S**... Single Shaft  
Albero lento semplice







#### QUICK SELECTION / Selezione veloce

input speed ( $n_1$ ) = 1400 min<sup>-1</sup>

| Output Speed<br>$n_2$<br>[min <sup>-1</sup> ] | Ratio<br>$i$ | Motor power<br>$P_{1M}$<br>[kW] | Output torque<br>$M_{2M}$<br>[Nm] | Service factor<br>f.s. | Nominal power<br>$P_{1R}$<br>[kW] | Nominal torque<br>$M_{2R}$<br>[Nm] | B5 motor flanges<br>not available |   | Available<br>B14 motor flanges |    | Dynamic efficiency | Tooth Module<br>Mn[mm] | Ratios code |
|---|--------------|---------------------------------|-----------------------------------|------------------------|-----------------------------------|------------------------------------|-----------------------------------|---|--------------------------------|----|--------------------|------------------------|-------------|
|   |              |                                 |                                   |                        |                                   |                                    | -                                 | - | P                              | Q  |                    |                        |             |
| 200   | 7            | 0.37                            | 14                                | 2.1                    | 0.76                              | 29                                 | -                                 | - | 63                             | 71 | RD                 | 2.2                    | 01          |
| 140   | 10           | 0.37                            | 20                                | 1.5                    | 0.54                              | 29                                 | -                                 | - | B-C                            | -  | 79                 | 2.2                    | 02          |
| 100   | 14           | 0.37                            | 27                                | 1.1                    | 0.39                              | 29                                 | -                                 | - | B-C                            | -  | 77                 | 2.4                    | 03          |
| 67  | 21           | 0.37                            | 36                                | 1.1                    | 0.41                              | 39                                 | -                                 | - | B-C                            | -  | 67                 | 1.6                    | 04          |
| 50  | 28           | 0.25                            | 31                                | 1.3                    | 0.31                              | 39                                 | -                                 | - | B-C                            | -  | 65                 | 2.5                    | 05          |
| 38  | 37           | 0.25                            | 40                                | 1.0                    | 0.25                              | 39                                 | -                                 | - | B-C                            | -  | 63                 | 1.8                    | 06          |
| 30  | 46           | 0.25                            | 46                                | 0.8                    | 0.21                              | 39                                 | -                                 | - | B-C                            | -  | 59                 | 1.5                    | 07          |
| 23  | 60           | 0.18                            | 41                                | 0.9                    | 0.17                              | 39                                 | -                                 | - | B-C                            | -  | 56                 | 1.2                    | 08          |
| 20  | 70           | 0.12                            | 31                                | 0.9                    | 0.11                              | 29                                 | -                                 | - | B-C                            | -  | 54                 | 1.0                    | 09          |
| 13.7  | 102          | 0.09*                           | 28                                | <0.8                   | 0.08                              | 28                                 | -                                 | - | B-C                            | -  | 49                 | 0.72                   | 10          |

**A** Motor Flanges Available  
Flange Motore Disponibili

**B** Supplied with Reduction Bushing  
Fornito con Bussola di Riduzione

**B** Available on Request without reduction bushing  
Disponibile a Richiesta senza Bussola di Riduzione

**C** Motor Flange Holes Position  
Posizione Fori Flangia Motore

\* Power higher than the maximum one which can be supported by the gearbox. Select according to the torque  $M_{2R}$   
Potenza superiore a quella massima sopportabile dal riduttore. Selezionare in base al momento torcente  $M_{2R}$

**EN** Unit I45 is supplied with synthetic oil, providing "long life" lubrication. For mounting position V5-V6 please contact us. See table 1 for lubrication and recommended quantity. In table 2 please see possible radial loads and axial loads on the gearbox. For complete documentation please visit our web site.

**I** Il riduttore tipo I45 viene fornito lubrificato a vita con olio sintetico. Per posizioni V5-V6 contattare il ns. servizio tecnico. Vedi tab.1 per oli e quantità consigliati. In tab.2 sono presenti i carichi radiali e assiali applicabili al riduttore. Per la documentazione completa consulta il nostro sito.

**D** Für die Lebensdauerschmierung ist das Getriebe der Größe I45 mit synthetischem Öl befüllt. Bei Einbaulage V5 oder V6 bitten wir um Rücksprache. In Tabelle 1 ist die Schmiermenge und das empfohlene Schmiermittel angegeben. In Tabelle 2 sind die zulässigen Radial - und Axialbelastungen des Getriebes aufgeführt. Die komplette Dokumentation, Wartungs - und Inbetriebnahmeanleitungen finden Sie unter.

**E** El reductor tamaño I45 se suministra, lubricado de por vida con aceite sintético. Para las posiciones V5 y V6 contactar con nuestro servicio técnico. Ver tabla 1, para cantidades y aceites recomendados. En la tabla 2, se encuentran las cargas radiales y axiales admitidas por el reductor. Para documentación completa, consultar nuestra Web.

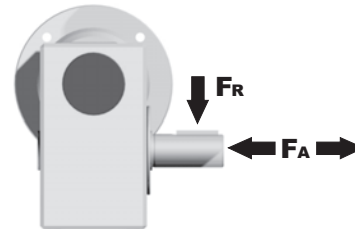
#### LUBRICATION I45 Oil Quantity 0.24 Lt.

| AGIP           | KLUBER           | SHELL         | MOBIL              |
|----------------|------------------|---------------|--------------------|
| Telium VSF 320 | Syntheso D220 EP | Tivela Oil WB | Glygoyl 30 SHC 630 |

tab. 1

#### RADIAL AND AXIAL LOADS

Output shaft  
Albero di uscita



| $n_2$<br>[min <sup>-1</sup> ] | FA<br>[N] | FR<br>[N] |
|-------------------------------|-----------|-----------|
| 200                           | 180       | 900       |
| 150                           | 200       | 1000      |
| 100                           | 220       | 1100      |
| 75                            | 240       | 1200      |
| 50                            | 260       | 1400      |
| 25                            | 300       | 1800      |
| 15                            | 400       | 2000      |

tab. 2

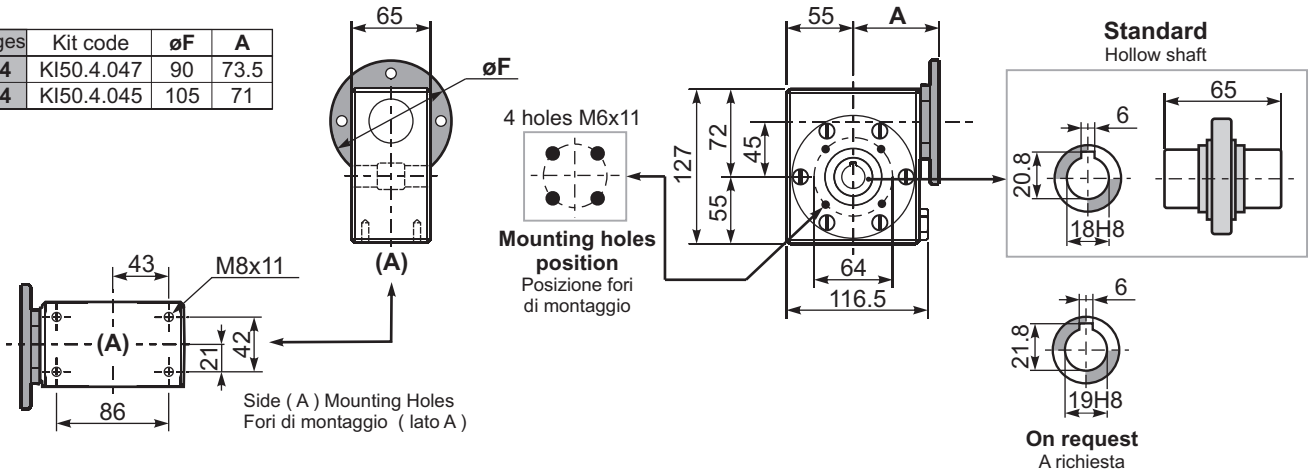
**SELECT THIS TYPE AND THIS SPECIFIC SIZE ON THE WEB PAGES TO GET COMPLETE TECHNICAL DATA.**  
Selezionare tipo e gandezza specifica nel sito web per la documentazione completa.



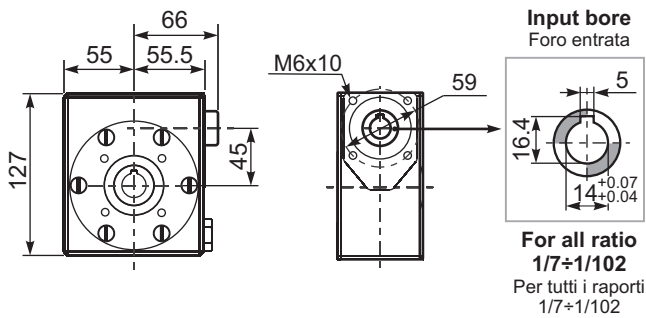
Gearbox weight peso riduttore **5.0 kg**

PI45**UN**... Basic wormbox  
Riduttore base

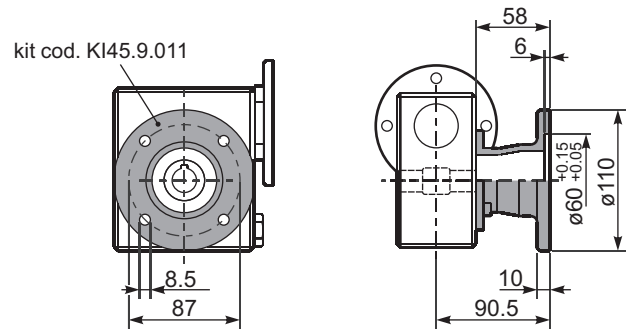
| M. flanges | Kit code   | øF  | A    |
|------------|------------|-----|------|
| 63B14      | KI50.4.047 | 90  | 73.5 |
| 71B14      | KI50.4.045 | 105 | 71   |



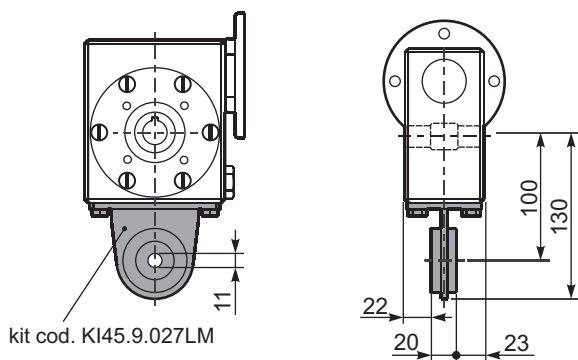
BI45UN... Modular base  
Base modulare



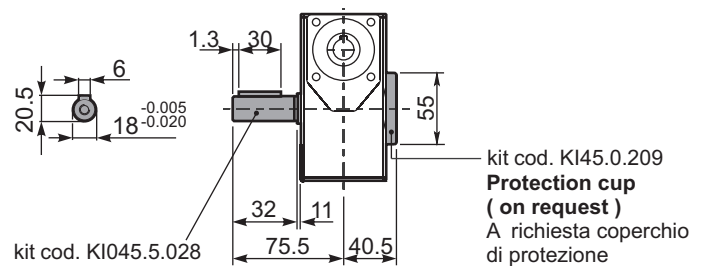
PI45FL... Output flange  
Flangia uscita



PI45BR... Reaction arm  
Braccio di reazione



PI45....S... Single Shaft  
Albero lento semplice





▪ **QUICK SELECTION** / Selezione veloce

input speed ( $n_1$ ) = 1400 min<sup>-1</sup>

| Output Speed<br>$n_2$<br>[min <sup>-1</sup> ] | Ratio<br>$i$ | Motor power<br>$P_{1M}$<br>[kW] | Output torque<br>$M_{2M}$<br>[Nm] | Service factor<br>f.s. | Nominal power<br>$P_{1R}$<br>[kW] | Nominal torque<br>$M_{2R}$<br>[Nm] | B5 motor flanges<br>not available |   | Available<br>B14 motor flanges |   |   | Dynamic efficiency<br>RD | Tooth Module<br>Mn[mm] | Ratios code |
|---|--------------|---------------------------------|-----------------------------------|------------------------|-----------------------------------|------------------------------------|-----------------------------------|---|--------------------------------|---|---|--------------------------|------------------------|-------------|
|   |              |                                 |                                   |                        |                                   |                                    | -                                 | - | P                              | Q | R |                          |                        |             |
| 200   | 7            | 0.75                            | 29                                | 1.8                    | 1.4                               | 54                                 | -                                 | - | B-C                            | B |   | 82                       | 2.5                    | 01          |
| 140   | 10           | 0.75                            | 41                                | 1.4                    | 1.1                               | 59                                 | -                                 | - | B-C                            | B |   | 80                       | 2.4                    | 02          |
| 100   | 14           | 0.75                            | 57                                | 1.1                    | 0.86                              | 65                                 | -                                 | - | B-C                            | B |   | 79                       | 2.6                    | 03          |
| 78  | 18           | 0.55                            | 51                                | 1.2                    | 0.64                              | 59                                 | -                                 | - | B-C                            | B |   | 75                       | 2.0                    | 04          |
| 54  | 26           | 0.55                            | 67                                | 0.9                    | 0.51                              | 63                                 | -                                 | - | B-C                            | B |   | 69                       | 2.7                    | 05          |
| 39  | 36           | 0.37                            | 63                                | 1.1                    | 0.41                              | 69                                 | -                                 | - | B-C                            |   |   | 69                       | 2.1                    | 06          |
| 33  | 43           | 0.37                            | 72                                | 0.9                    | 0.34                              | 65                                 | -                                 | - | B-C                            |   |   | 66                       | 1.8                    | 07          |
| 23  | 60           | 0.25                            | 59                                | 1.0                    | 0.25                              | 59                                 | -                                 | - | B-C                            |   |   | 58                       | 1.3                    | 08          |
| 21  | 68           | 0.25                            | 66                                | 0.8                    | 0.21                              | 55                                 | -                                 | - | B-C                            |   |   | 57                       | 1.2                    | 09          |
| 17.5  | 80           | 0.18                            | 53                                | 1.0                    | 0.18                              | 54                                 | -                                 | - | B-C                            |   |   | 54                       | 1.0                    | 10          |
| 14  | 100          | 0.12                            | 41                                | 1.2                    | 0.14                              | 49                                 | -                                 | - | B-C                            |   |   | 50                       | 0.8                    | 11          |

Motor Flanges Available  
Flange Motore Disponibili

B) Supplied with Reduction Bushing  
Fornito con Bussola di Riduzione

B) Available on Request without reduction bushing  
Disponibile a Richiesta senza Bussola di Riduzione

C) Motor Flange Holes Position  
Posizione Fori Flangia Motore

**EN** Unit I50 is supplied with synthetic oil, providing "long life" lubrication. For mounting position V5-V6 please contact us. See table 1 for lubrication and recommended quantity. In table 2 please see possible radial loads and axial loads on the gearbox. For complete documentation please visit our web site.

**I** Il riduttore tipo I50 viene fornito lubrificato a vita con olio sintetico. Per posizioni V5-V6 contattare il ns. servizio tecnico. Vedi tab.1 per oli e quantità consigliati. In tab.2 sono presenti i carichi radiali e assiali applicabili al riduttore. Per la documentazione completa consulta il nostro sito.

**D** Für die Lebensdauerschmierung ist das Getriebe der Größe I50 mit synthetischem Öl befüllt. Bei Einbaulage V5 oder V6 bitten wir um Rücksprache. In Tabelle 1 ist die Schmiermenge und das empfohlene Schmiermittel angegeben. In Tabelle 2 sind die zulässigen Radial- und Axialbelastungen des Getriebes aufgeführt. Die komplette Dokumentation, Wartungs- und Inbetriebnahmeanleitungen finden Sie unter.

**E** El reductor tamaño I50 se suministra, lubricado de por vida con aceite sintético. Para las posiciones V5 y V6 contactar con nuestro servicio técnico. Ver tabla 1, para cantidades y aceites recomendados. En la tabla 2, se encuentran las cargas radiales y axiales admitidas por el reductor. Para documentación completa, consultar nuestra Web.

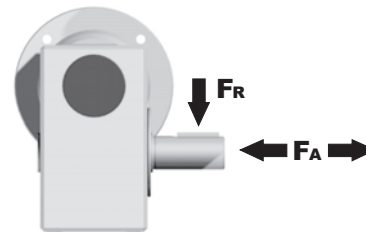
▪ **LUBRICATION I50 Oil Quantity 0.38 Lt**

| AGIP           | KLUBER           | SHELL         | MOBIL              |
|----------------|------------------|---------------|--------------------|
| Telium VSF 320 | Syntheso D220 EP | Tivela Oil WB | Glygoyl 30 SHC 630 |

tab. 1

▪ **RADIAL AND AXIAL LOADS**

Output shaft  
Albero di uscita



| $n_2$<br>[min <sup>-1</sup> ] | FA<br>[N] | FR<br>[N] |
|-------------------------------|-----------|-----------|
| 200                           | 240       | 1200      |
| 150                           | 280       | 1400      |
| 100                           | 300       | 1500      |
| 75                            | 340       | 1700      |
| 50                            | 380       | 1900      |
| 25                            | 480       | 2500      |
| 15                            | 560       | 2800      |

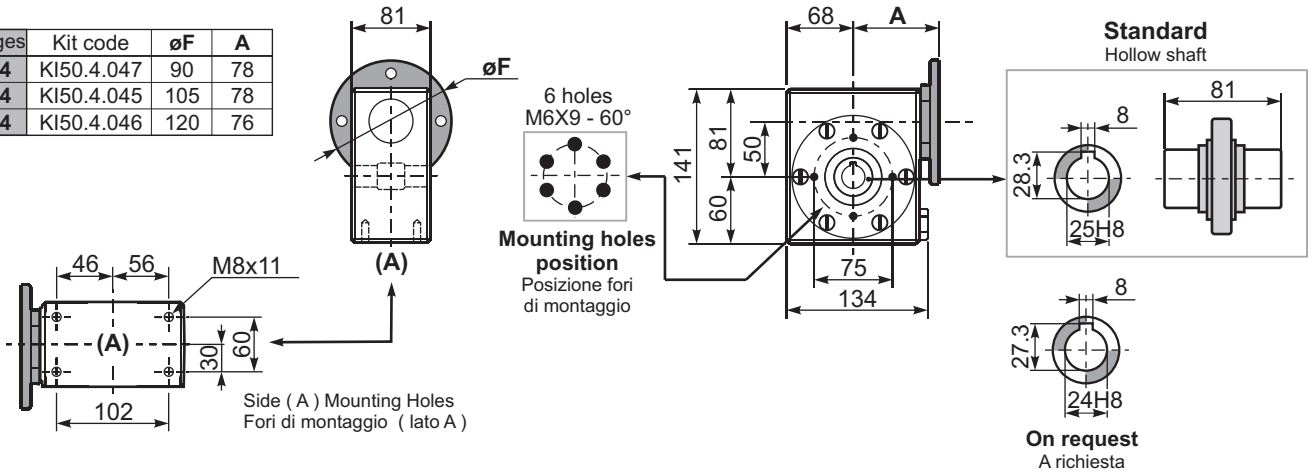
tab. 2

▪ **SELECT THIS TYPE AND THIS SPECIFIC SIZE ON THE WEB PAGES TO GET COMPLETE TECHNICAL DATA.**  
Selezionare tipo e gandezza specifica nel sito web per la documentazione completa.

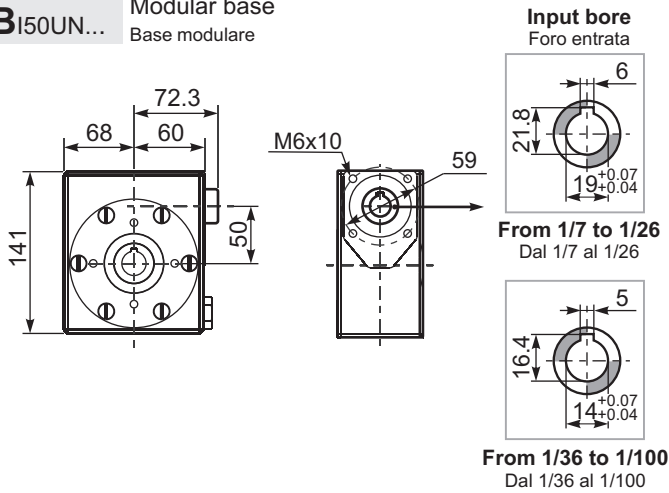
Gearbox weight  
peso riduttore **7.3 kg**

PI50**UN**... Basic wormbox  
Riduttore base

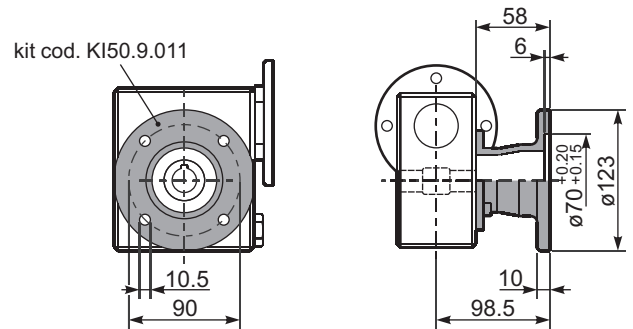
| M. flanges | Kit code   | øF  | A  |
|------------|------------|-----|----|
| 63B14      | KI50.4.047 | 90  | 78 |
| 71B14      | KI50.4.045 | 105 | 78 |
| 80B14      | KI50.4.046 | 120 | 76 |



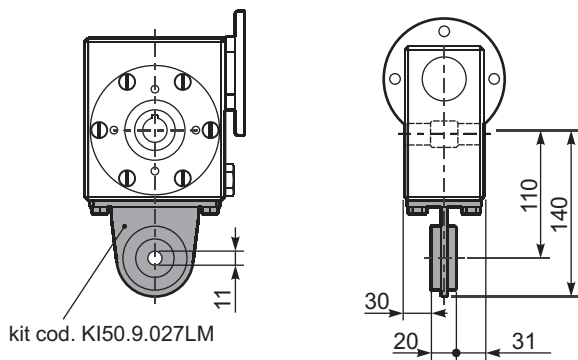
BI50UN... Modular base  
Base modulare



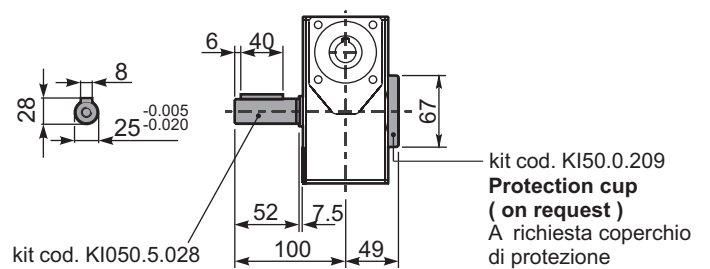
PI50FL... Output flange  
Flangia uscita



PI50BR... Reaction arm  
Braccio di reazione



PI50.....S... Single Shaft  
Albero lento semplice





▪ **QUICK SELECTION** / Selezione veloce

input speed ( $n_1$ ) = 1400 min<sup>-1</sup>

| Output Speed<br>$n_2$<br>[min <sup>-1</sup> ] | Ratio<br>$i$ | Motor power<br>$P_{1M}$<br>[kW] | Output torque<br>$M_{2M}$<br>[Nm] | Service factor<br>f.s. | Nominal power<br>$P_{1R}$<br>[kW] | Nominal torque<br>$M_{2R}$<br>[Nm] | B5 motor flanges<br>not available |   | Available<br>B14 motor flanges |     |   | Dynamic efficiency<br>RD | Tooth Module<br>Mn [mm] | Ratios code |
|---|--------------|---------------------------------|-----------------------------------|------------------------|-----------------------------------|------------------------------------|-----------------------------------|---|--------------------------------|-----|---|--------------------------|-------------------------|-------------|
|   |              |                                 |                                   |                        |                                   |                                    | -                                 | - | Q                              | R   | T |                          |                         |             |
| 200   | 7            | 1.8                             | 71                                | 1.7                    | 3.0                               | 119                                |                                   |   | B-C                            | B-C |   | 83                       | 3.1                     | 01          |
| 140   | 10           | 1.8                             | 99                                | 1.3                    | 2.3                               | 128                                |                                   |   | B-C                            | B-C |   | 81                       | 3.1                     | 02          |
| 93  | 15           | 1.5                             | 121                               | 1.1                    | 1.6                               | 131                                |                                   |   | B-C                            | B-C |   | 79                       | 3.1                     | 03          |
| 74  | 19           | 1.1                             | 111                               | 1.2                    | 1.3                               | 131                                |                                   |   | B-C                            | B-C |   | 78                       | 2.6                     | 04          |
| 58  | 24           | 1.1                             | 135                               | 1.0                    | 1.1                               | 135                                |                                   |   | B-C                            | B-C |   | 75                       | 2.0                     | 05          |
| 47  | 30           | 1.1                             | 167                               | 0.8                    | 0.92                              | 139                                |                                   |   | B-C                            | B-C |   | 74                       | 3.2                     | 06          |
| 39  | 36           | 0.75                            | 125                               | 1.1                    | 0.84                              | 140                                |                                   |   | B-C                            | B-C |   | 68                       | 2.7                     | 07          |
| 31  | 45           | 0.55                            | 111                               | 1.2                    | 0.63                              | 129                                |                                   |   | B-C                            | C   |   | 66                       | 2.1                     | 08          |
| 21  | 67           | 0.55                            | 151                               | 0.8                    | 0.43                              | 118                                |                                   |   | B-C                            | C   |   | 60                       | 1.5                     | 09          |
| 17.5  | 80           | 0.37                            | 115                               | 1.0                    | 0.36                              | 113                                |                                   |   | B-C                            | C   |   | 57                       | 1.3                     | 10          |
| 14.9  | 94           | 0.37                            | 123                               | 0.9                    | 0.34                              | 113                                |                                   |   | B-C                            | C   |   | 52                       | 1.1                     | 11          |

Motor Flanges Available  
Flange Motore Disponibili

B) Supplied with Reduction Bushing  
Fornito con Bussola di Riduzione

B) Available on Request without reduction bushing  
Disponibile a Richiesta senza Bussola di Riduzione

C) Motor Flange Holes Position  
Posizione Fori Flangia Motore

**EN** Unit I63 is supplied with synthetic oil, providing "long life" lubrication. For mounting position V5-V6 please contact us. See table 1 for lubrication and recommended quantity. In table 2 please see possible radial loads and axial loads on the gearbox. For complete documentation please visit our web site.

**I** Il riduttore tipo I63 viene fornito lubrificato a vita con olio sintetico. Per posizioni V5-V6 contattare il ns. servizio tecnico. Vedi tab.1 per oli e quantità consigliati. In tab.2 sono presenti i carichi radiali e assiali applicabili al riduttore. Per la documentazione completa consulta il nostro sito.

**D** Für die Lebensdauerschmierung ist das Getriebe der Größe I63 mit synthetischem Öl befüllt. Bei Einbaulage V5 oder V6 bitten wir um Rücksprache. In Tabelle 1 ist die Schmiermenge und das empfohlene Schmiermittel angegeben. In Tabelle 2 sind die zulässigen Radial- und Axialbelastungen des Getriebes aufgeführt. Die komplette Dokumentation, Wartungs- und Inbetriebnahmeanleitungen finden Sie unter.

**E** El reductor tamaño I63 se suministra, lubricado de por vida con aceite sintético. Para las posiciones V5 y V6 contactar con nuestro servicio técnico. Ver tabla 1, para cantidades y aceites recomendados. En la tabla 2, se encuentran las cargas radiales y axiales admitidas por el reductor. Para documentación completa, consultar nuestra Web.

| Standard       | On request       |         |               |                    |         |
|----------------|------------------|---------|---------------|--------------------|---------|
|                |                  |         |               |                    |         |
| 0.98 LT        | 0.69 LT          | 0.69 LT | 0.98 LT       | 0.98 LT            | 0.98 LT |
| <b>AGIP</b>    | <b>KLUBER</b>    |         | <b>SHELL</b>  | <b>MOBIL</b>       |         |
| Telium VSF 320 | Syntheso D220 EP |         | Tivela Oil WB | Glygoyl 30 SHC 630 |         |

tab. 1

| ▪ RADIAL AND AXIAL LOADS         |  |       |      |
|----------------------------------|--|-------|------|
| Output shaft<br>Albero di uscita |  | $n_2$ | FR   |
|                                  |  |       | FA   |
|                                  |  | 200   | 1800 |
|                                  |  | 150   | 2000 |
|                                  |  | 100   | 2300 |
|                                  |  | 75    | 2500 |
|                                  |  | 50    | 3000 |
|                                  |  | 25    | 3800 |
|                                  |  | 15    | 4000 |

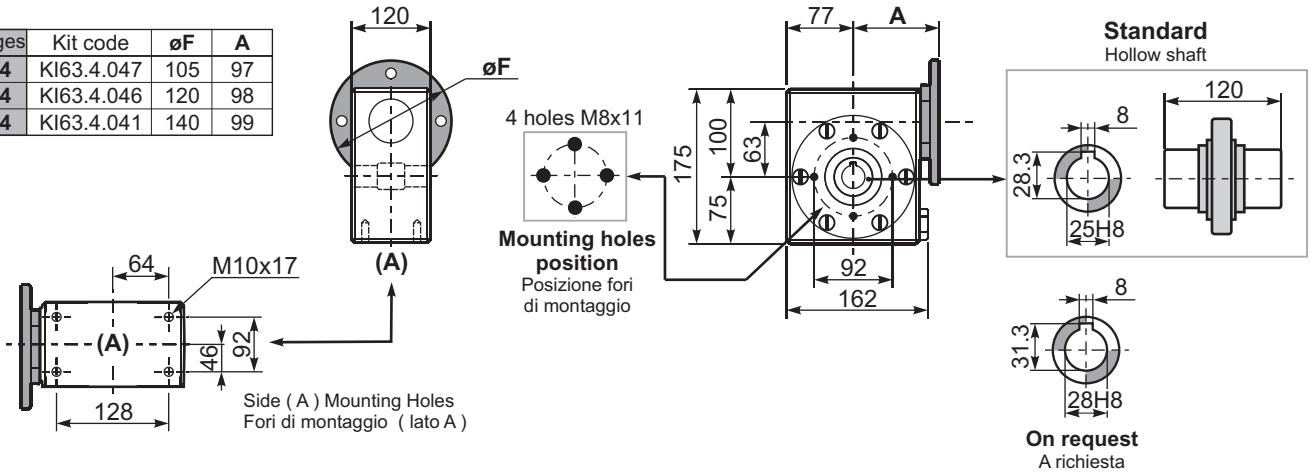
tab. 2

▪ **SELECT THIS TYPE AND THIS SPECIFIC SIZE ON THE WEB PAGES TO GET COMPLETE TECHNICAL DATA.**  
Selezionare tipo e gandezza specifica nel sito web per la documentazione completa.

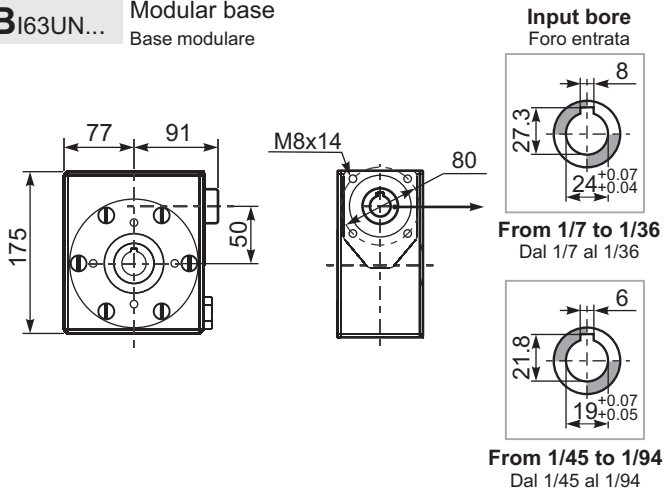
Gearbox weight **14.6 kg**  
peso riduttore

PI63**UN**... Basic wormbox  
Riduttore base

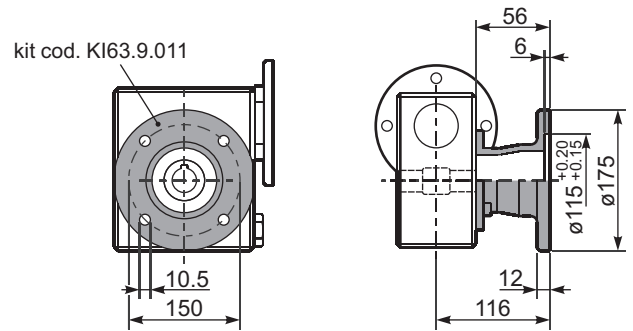
| M. flanges | Kit code   | øF  | A  |
|------------|------------|-----|----|
| 71B14      | KI63.4.047 | 105 | 97 |
| 80B14      | KI63.4.046 | 120 | 98 |
| 90B14      | KI63.4.041 | 140 | 99 |



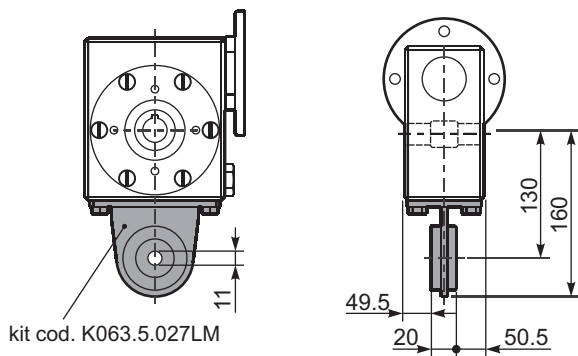
PI63**UN**... Modular base  
Base modulare



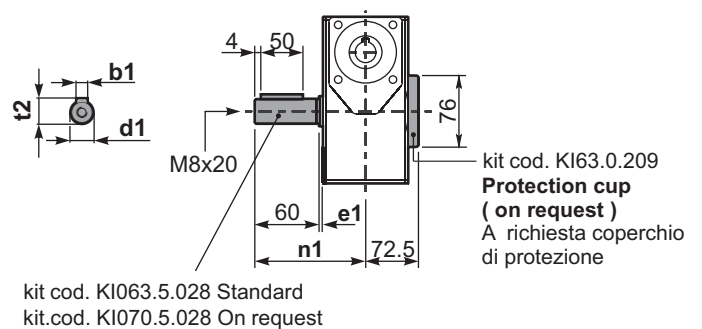
PI63**FL**... Output flange  
Flangia uscita



PI63**BR**... Reaction arm  
Braccio di reazione



PI63.....**S**... Single Shaft  
Albero lento semplice



kit cod. KI063.5.028 Standard  
kit cod. KI070.5.028 On request

|            | b1 | e1  | d1                                     | n1    | t2 |
|------------|----|-----|--|-------|----|
| Standard   | 8  | 3.2 | 25 <sup>-0.005</sup> <sub>-0.020</sub> | 121.9 | 28 |
| On request | 8  | 3.5 | 28 <sup>-0.005</sup> <sub>-0.020</sub> | 122.2 | 31 |



#### QUICK SELECTION / Selezione veloce

input speed ( $n_1$ ) = 1400 min<sup>-1</sup>

| Output Speed<br>$n_2$<br>[min <sup>-1</sup> ] | Ratio<br>$i$ | Motor power<br>$P_{1M}$<br>[kW] | Output torque<br>$M_{2M}$<br>[Nm] | Service factor<br>f.s. | Nominal power<br>$P_{1R}$<br>[kW] | Nominal torque<br>$M_{2R}$<br>[Nm] | Available B5 motor flanges |    | Available B14 motor flanges | Dynamic efficiency | Tooth Module<br>$Mn$ [mm] | Ratios code |
|---|--------------|---------------------------------|-----------------------------------|------------------------|-----------------------------------|------------------------------------|----------------------------|----|-----------------------------|--------------------|---------------------------|-------------|
|   |              |                                 |                                   |                        |                                   |                                    | D                          | E  | U                           |                    |                           |             |
|   |              |                                 |                                   |                        |                                   |                                    | 80                         | 90 | 100-112                     |                    |                           |             |
| 200   | 7            | 4.0                             | 168                               | 1.5                    | 5.8                               | 245                                | B                          | B  |                             | 88                 | 4.23                      | 01          |
| 140   | 10           | 4.0                             | 218                               | 1.2                    | 4.9                               | 270                                | B                          | B  |                             | 80                 | 4.2                       | 02          |
| 100   | 14           | 3.0                             | 223                               | 1.3                    | 3.9                               | 290                                | B                          | B  |                             | 78                 | 4.5                       | 03          |
| 70  | 20           | 2.2                             | 237                               | 1.2                    | 2.6                               | 280                                | B                          | B  |                             | 79                 | 3.4                       | 04          |
| 64  | 22           | 2.2                             | 258                               | 1.1                    | 2.4                               | 280                                | B                          | B  |                             | 78                 | 3.1                       | 05          |
| 50  | 28           | 2.2                             | 315                               | 1.0                    | 2.3                               | 330                                | B                          | B  |                             | 75                 | 4.7                       | 06          |
| 37  | 38           | 1.5                             | 276                               | 1.2                    | 1.7                               | 320                                | B                          | B  |                             | 71                 | 3.5                       | 07          |
| 30  | 46           | 1.5                             | 320                               | 1.0                    | 1.4                               | 310                                | B                          | B  |                             | 68                 | 3.1                       | 08          |
| 27  | 52           | 1.1                             | 258                               | 1.1                    | 1.2                               | 275                                | B                          | B  |                             | 66                 | 2.7                       | 09          |
| 21  | 67           | 1.1                             | 327                               | 0.8                    | 0.93                              | 275                                | B                          | B  |                             | 65                 | 2.1                       | 10          |
| 18.9  | 74           | 0.75                            | 220                               | 1.2                    | 0.87                              | 255                                | B                          | B  |                             | 58                 | 1.9                       | 11          |
| 14.6  | 96           | 0.55                            | 191                               | 1.2                    | 0.66                              | 230                                | B                          | B  |                             | 53                 | 1.5                       | 12          |

Motor Flanges Available Flange Motore Disponibili    
 B) Supplied with Reduction Bushing Fornito con Bussola di Riduzione    
 B) Available on Request without reduction bushing Disponibile a Richiesta senza Bussola di Riduzione    
 C) Motor Flange Holes Position Posizione Fori Flangia Motore

**EN** Unit I85 is supplied with synthetic oil, providing "long life" lubrication. For mounting position V5-V6 please contact us. See table 1 for lubrication and recommended quantity. In table 2 please see possible radial loads and axial loads on the gearbox. For complete documentation please visit our web site.

**I** Il riduttore tipo I85 viene fornito lubrificato a vita con olio sintetico. Per posizioni V5-V6 contattare il ns. servizio tecnico. Vedi tab.1 per oli e quantità consigliati. In tab.2 sono presenti i carichi radiali e assiali applicabili al riduttore. Per la documentazione completa consulta il nostro sito.

**D** Für die Lebensdauerschmierung ist das Getriebe der Größe I85 mit synthetischem Öl befüllt. Bei Einbaulage V5 oder V6 bitten wir um Rücksprache. In Tabelle 1 ist die Schmiermenge und das empfohlene Schmiermittel angegeben. In Tabelle 2 sind die zulässigen Radial- und Axialbelastungen des Getriebes aufgeführt. Die komplette Dokumentation, Wartungs- und Inbetriebnahmeanleitungen finden Sie unter.

**E** El reductor tamaño I85 se suministra, lubricado de por vida con aceite sintético. Para las posiciones V5 y V6 contactar con nuestro servicio técnico. Ver tabla 1, para cantidades y aceites recomendados. En la tabla 2, se encuentran las cargas radiales y axiales admitidas por el reductor. Para documentación completa, consultar nuestra Web.

| Standard       | On request       |        |               |                    |         |
|----------------|------------------|--------|---------------|--------------------|---------|
|                |                  |        |               |                    |         |
| 2.10 LT        | 1.50 LT          | 1.50LT | 2.10 LT       | 2.10 LT            | 2.10 LT |
| <b>AGIP</b>    | <b>KLUBER</b>    |        | <b>SHELL</b>  | <b>MOBIL</b>       |         |
| Telium VSF 320 | Syntheso D220 EP |        | Tivela Oil WB | Glygoyl 30 SHC 630 |         |

tab. 1

| -RADIAL AND AXIAL LOADS          |                               |           |           |
|----------------------------------|-------------------------------|-----------|-----------|
| Output shaft<br>Albero di uscita | $n_2$<br>[min <sup>-1</sup> ] | FA<br>[N] | FR<br>[N] |
|                                  | 200                           | 500       | 2500      |
|                                  | 150                           | 580       | 2900      |
|                                  | 100                           | 600       | 3000      |
|                                  | 75                            | 700       | 3500      |
|                                  | 50                            | 800       | 4000      |
|                                  | 25                            | 1000      | 5000      |
|                                  | 15                            | 1160      | 5800      |

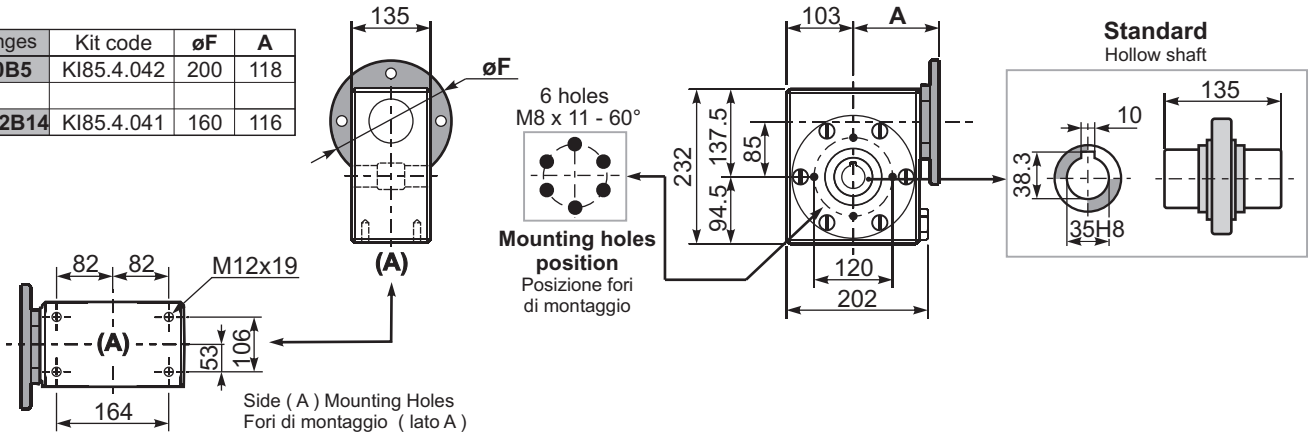
tab. 2

**SELECT THIS TYPE AND THIS SPECIFIC SIZE ON THE WEB PAGES TO GET COMPLETE TECHNICAL DATA.**  
 Selezionare tipo e gandezza specifica nel sito web per la documentazione completa.

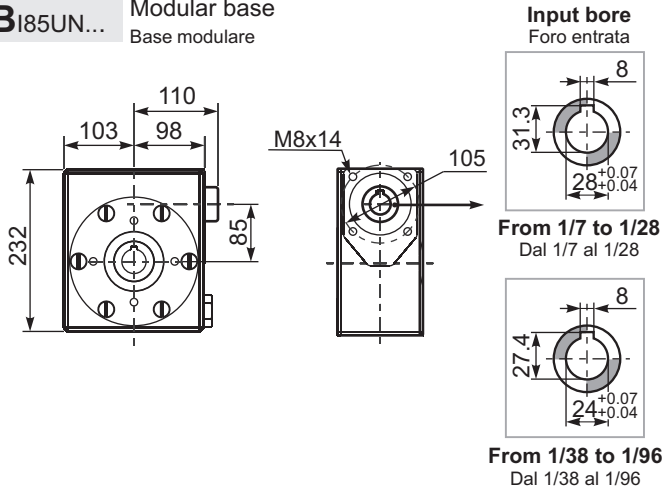
Gearbox weight  
peso riduttore **23.3 kg**

PI85**UN**... Basic wormbox  
Riduttore base

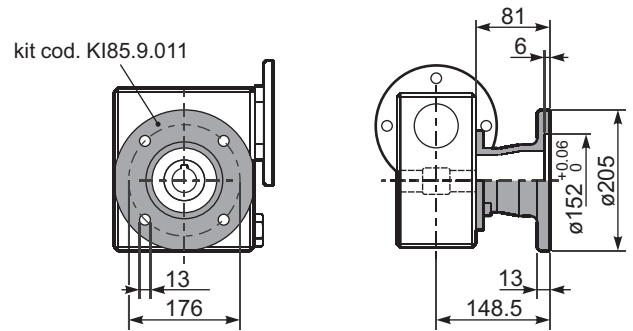
| M. flanges | Kit code   | øF  | A   |
|------------|------------|-----|-----|
| 80-90B5    | KI85.4.042 | 200 | 118 |
| 100-112B14 | KI85.4.041 | 160 | 116 |



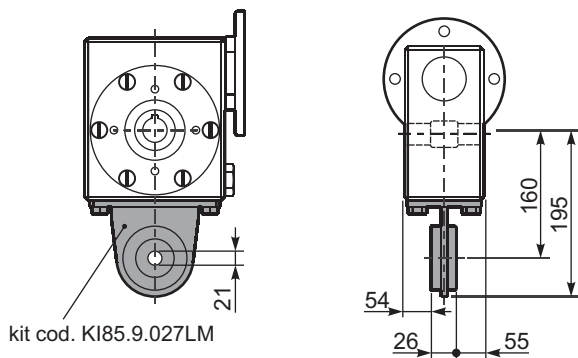
PI85**UN**... Modular base  
Base modulare



PI85**FL**... Output flange  
Flangia uscita



PI85**BR**... Reaction arm  
Braccio di reazione



PI85.....**S**... Single Shaft  
Albero lento semplice

