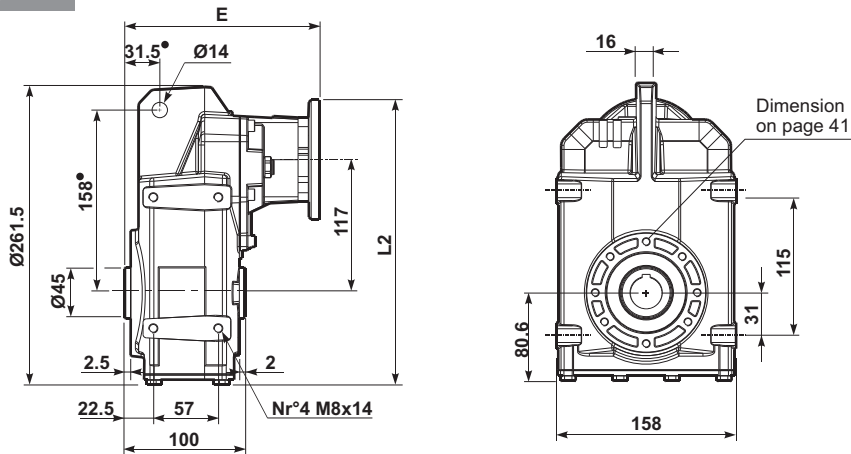




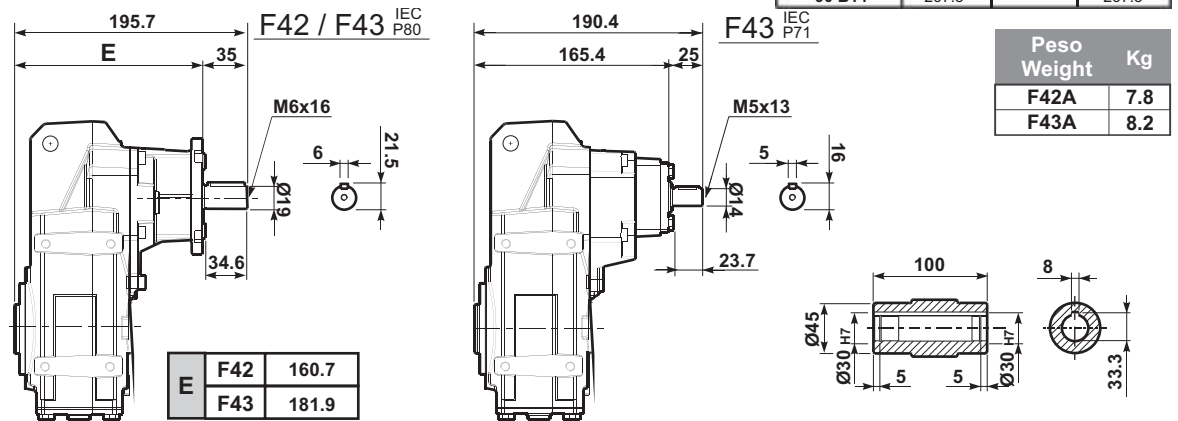
Shaft Mount



Motor Flange	E		
	F42	F43 ^{IEC P71}	F43 ^{IEC P80}
63 B5	170	172	191
71 B5	168	170	189
80-90 B5	170	-	191
56 B14	-	175.5	-
63 B14	-	174.5	-
71 B14	168	171.5	189
80 B14	169	-	190
90 B14	170	-	191

Motor Flange	L2		
	F42	F43 ^{IEC P71}	F43 ^{IEC P80}
63 B5	267.5	267.5	267.5
71 B5	277.5	264	277.5
80-90 B5	297.5	-	297.5
56 B14	-	236.5	-
63 B14	-	242.5	-
71 B14	250	250	250
80 B14	257.5	-	257.5
90 B14	267.5	-	267.5

Type R

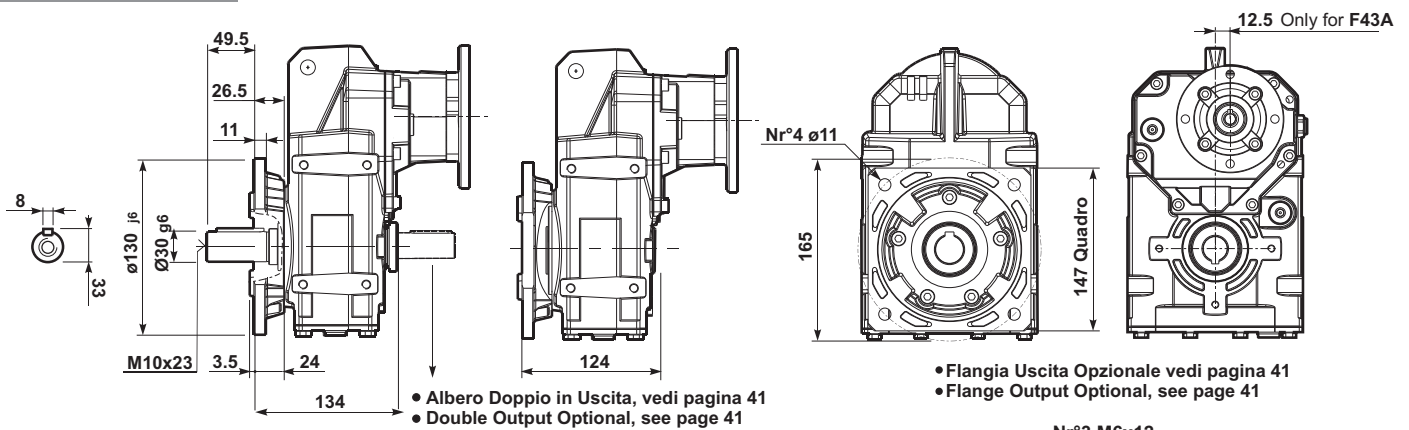


E	F42	F43
	160.7	181.9

Peso Weight Kg	
F42A	7.8
F43A	8.2

• Alberi di uscita a richiesta vedi pagina 40
• Output shaft on request, see page 40

Flange Mount



• Albero Doppio in Uscita, vedi pagina 41
• Double Output Optional, see page 41

• Flangia Uscita Opzionale vedi pagina 41
• Flange Output Optional, see page 41

Output shaft

