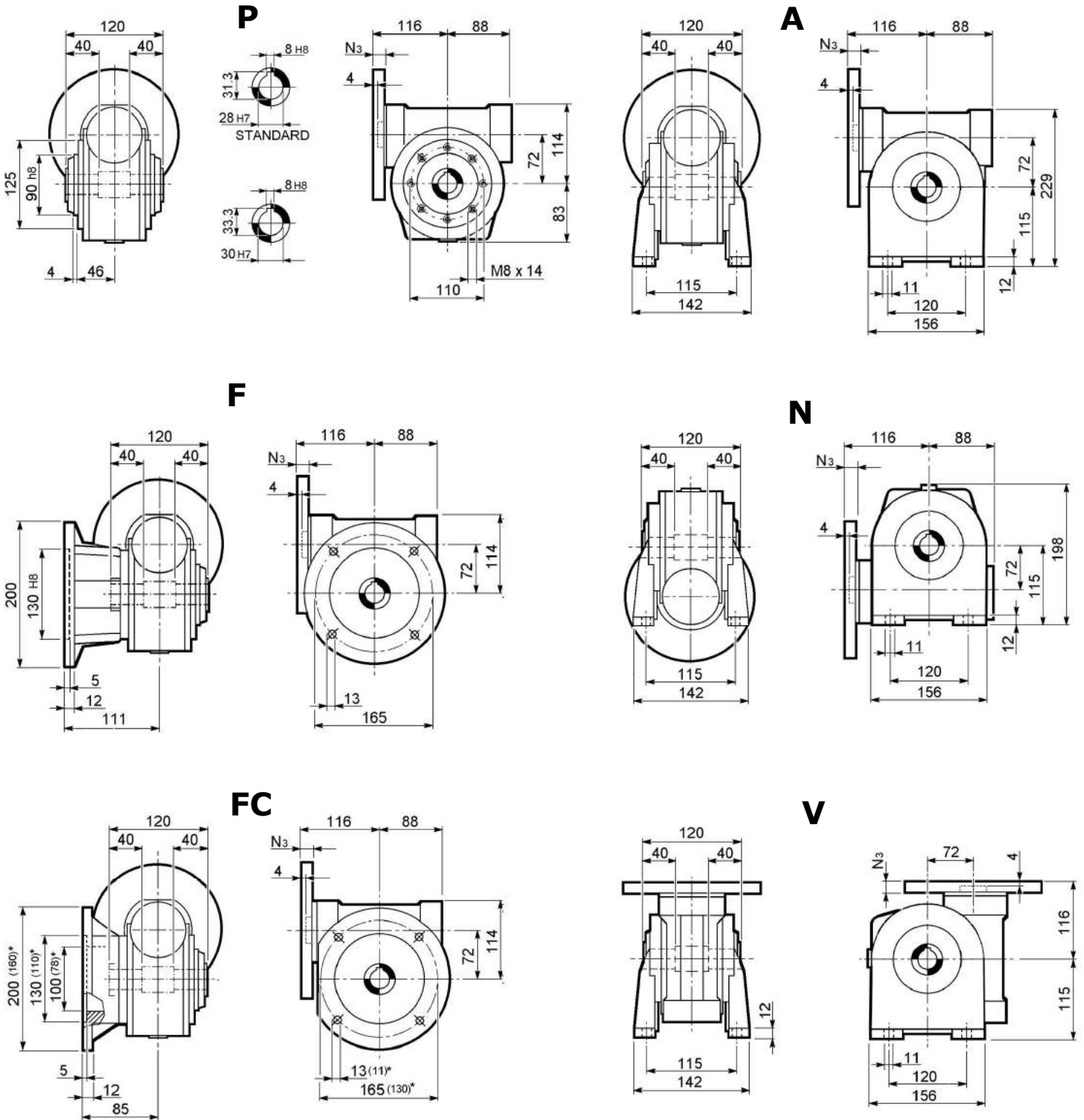
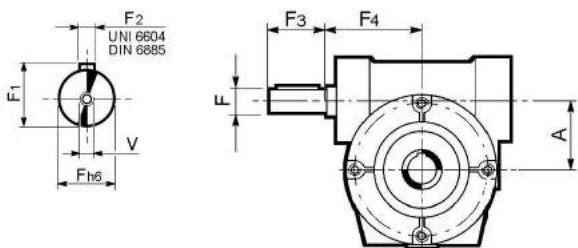


# SVF 72

Ratio	7	10	15	20	25	30	40	50	60	80	100
Nm (1400rpm)	170	190	190	190	190	200	190	170	160	150	130
R.D.	0.88	0.86	0.83	0.80	0.78	0.74	0.70	0.67	0.63	0.58	0.53



## HS Input shaft



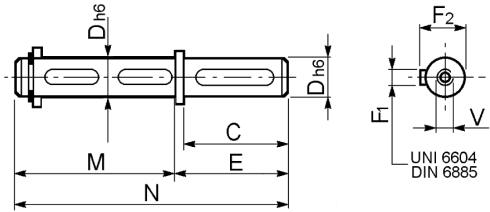
A	F	F1	F2	F3	F4	V
72	19	21.5	6	40	98	M6x16

The weight: 8.2 kg

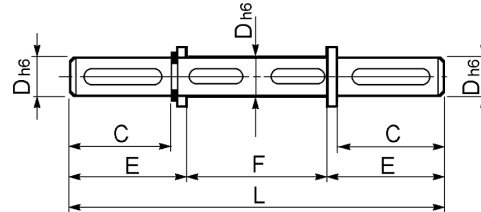
# SVF 72

## Output shaft

Single output shaft

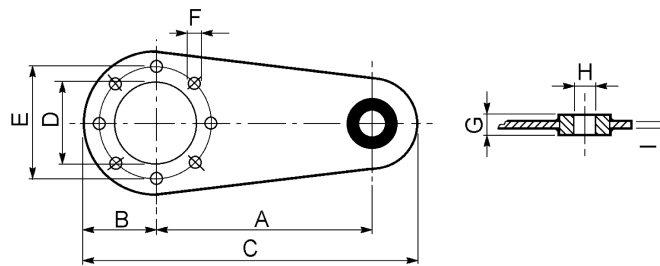


Double output shaft



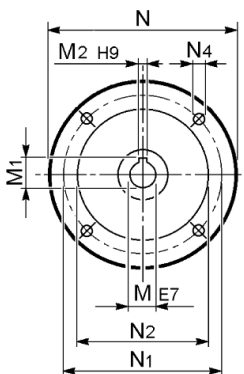
Typ	D	C	E	F	F1	F2	L	M	N	V
SVF 72	28	60	70	120	8	31	247	126	196	M8x20
SVF 72	30	60	70	120	8	33	247	126	196	M8x20

## Torque arm



Typ	A	B	C	D	E	F	G	H	I
SVF 72	200	63	300	90	110	9	25	20	6

## P.A.M.



P.A.M.	M	N	N1	N2	M2	M1	N4
IEC 71B5	14	160	130	110	5	16,3	9
IEC 71B14	14	105	85	70	5	16,3	7
IEC 80B5	19	200	165	130	6	21,8	11
IEC 80B14	19	120	100	80	6	21,8	7
IEC 90B5	24	200	165	130	8	27,3	11
IEC 90B14	24	140	115	95	8	27,3	9
IEC 100/112B5	28	250	215	180	8	31,3	13,5
IEC 100/112B14	28	160	130	110	8	31,3	9